



35 Coronation Street

Carlisle How, Saltburn-By-The-Sea, TS13 4DW

Offers in excess of £80,000

PROPERTY TO BE SOLD WITH TENANT IN SITU PAYING £650 A MONTH WHICH CREATES A RENTAL YIELD OF 9.75%

LOCATED IN THE AREA OF CARLISLE HOW, SALTburn-BY-THE-SEA HAVING BEEN FULLY REFURBISHED FROM THE GROUND UPWARDS, AND FURNISHED WITH HIGH QUALITY FURNITURE, THE PROPERTY IS SOLD AS A GOING CONCERN BUSINESS WITH ALL CURRENT FURNITURE AND FURNISHINGS INCLUDED IN THE SALE / ACCOMMODATION SPREAD OVER 3 STOREYS, WITH A TOTAL OF THREE BEDROOMS / A REGULAR HIGH LEVEL OF OCCUPANCY CREATING A GREAT RETURN FOR THE CURRENT OWNER AND ANY INCOMING NEW OWNER / THIS WOULD BE A GREAT AND EASY ADDITION TO ANYONES PORTFOLIO.

NEARBY TO SCHOOLS, SHOPS AND ACCESSIBLE MAINSTREAM TRANSPORTATION LINKS THIS PROPERTY IS ONE OF A KIND IN THE DESIRABLE AREA OF SALTburn. AS THE PROPERTY HAS BEEN RENOVATED TO A HIGH STANDARD THIS ALLOWS A NEW INCOMING OWNER TO GAIN A IMMEDIATE RENTAL INCOME WHICH ALLOWS A TRULY HANDS OFF EXPERIENCE.

ANY QUESTIONS OR QUERIES PLEASE CALL PROGRESSION PROPERTY ON 01642 214660.

- TENANT IN PLACE GENERATING A MONTHLY INCOME OF £650 A MONTH
- A TURN KEY INVESTMENT DUE TO SUPERIOR QUALITY, RECENTLY REFURBISHED, INTERIOR
- LOCATED 15 MILES FROM WHITBY, 17 MILES TO MIDDLESBROUGH, 7.5 MILES TO GUISBOROUGH AND LESS THAN 4 MILES TO SALTburn BY THE SEA
- DESIRABLE AREA OF CARLISLE HOW, SALTburn-BY-THE-SEA
- THE SALE PRICE INCLUDES ALL FURNITURE, UTENSILS, WHITE GOODS ETC

Viewing

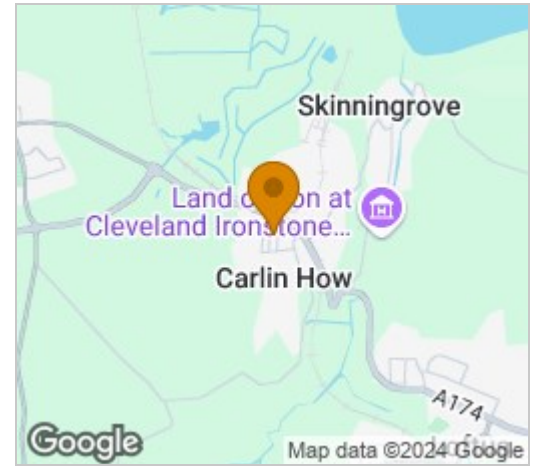
Please contact our Progression Property Office on 01642 063352 if you wish to arrange a viewing appointment for this property or require further information.



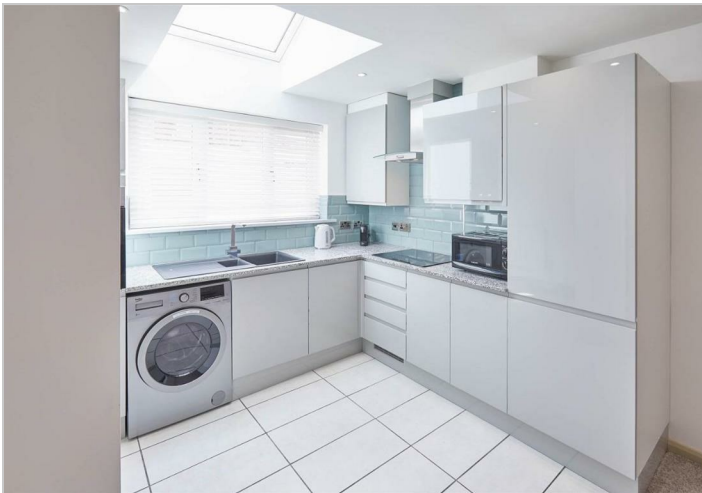
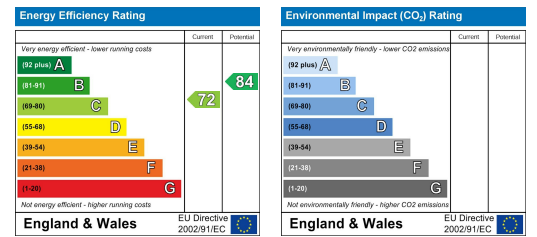
Floor Plan



Area Map



Energy Efficiency Graph



These particulars, whilst believed to be accurate are set out as a general outline only for guidance and do not constitute any part of an offer or contract. Intending purchasers should not rely on them as statements of representation of fact, but must satisfy themselves by inspection or otherwise as to their accuracy. No person in this firm's employment has the authority to make or give any representation or warranty in respect of the property.

329 Linthorpe Road, Middlesbrough, TS5 6AA

Tel: 01642 063352 Email: info@progression-lettings.co.uk <https://www.progression-property.co.uk>