



46 Carlow Street

, Middlesbrough, TS1 4SD

£450 Per month

STUDENTS ONLY ROOMS FROM £433PCM

Welcome to Carlow Street, Middlesbrough - a stunning property that is perfect for students looking for a comfortable and convenient living space. This newly refurbished house boasts four spacious bedrooms, each with its own en-suite bathroom, providing the utmost privacy and convenience for its occupants.

This property is ideal for those seeking a balance between academic pursuits and a vibrant social life. With bills included and fully furnished, this house offers a hassle-free living experience, allowing you to focus on your studies and enjoy student life to the fullest.

Whether you're relaxing in the cosy reception room or unwinding in your own private en-suite bathroom, this property offers a perfect blend of comfort and functionality. Don't miss out on the opportunity to secure this fantastic student accommodation for the 24/25 academic year. Embrace the convenience of a fully furnished space where you can study, socialise, and create lasting memories.

Viewing

Please contact our Progression Property Office on 01642 063352 if you wish to arrange a viewing appointment for this property or require further information.

- STUDENT ONLY
- FOUR BED HOUSE SHARE
- ALL EN-SUITE ROOMS
- BILLS INCLUSIVE
- FULLY FURNISHED



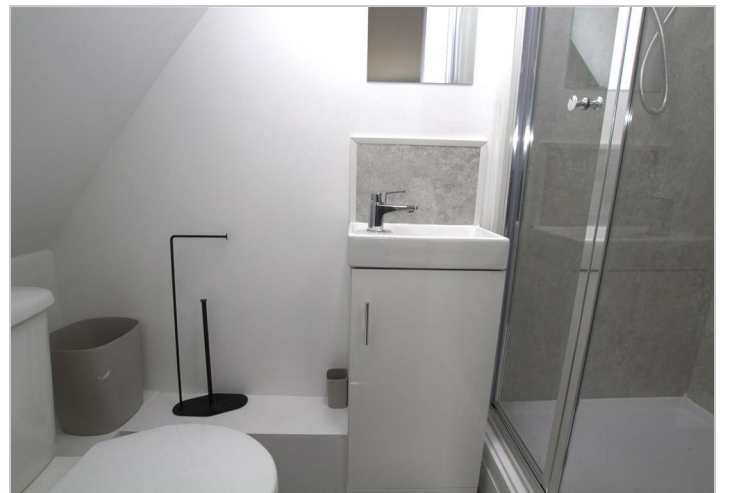
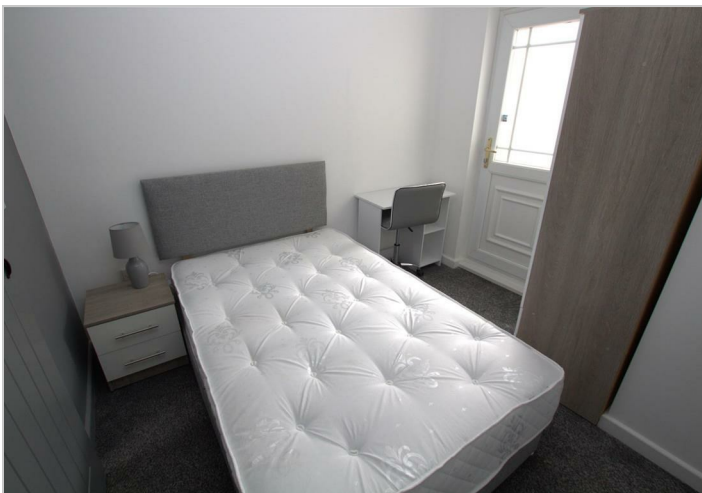
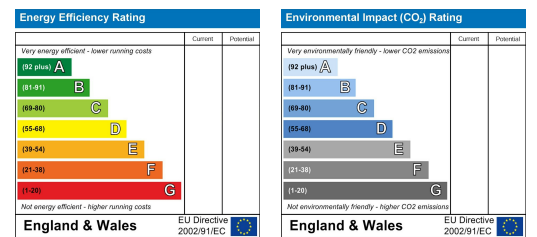
Floor Plan



Area Map



Energy Efficiency Graph



These particulars, whilst believed to be accurate are set out as a general outline only for guidance and do not constitute any part of an offer or contract. Intending purchasers should not rely on them as statements of representation of fact, but must satisfy themselves by inspection or otherwise as to their accuracy. No person in this firm's employment has the authority to make or give any representation or warranty in respect of the property.

329 Linthorpe Road, Middlesbrough, TS5 6AA

Tel: 01642 063352 Email: info@progression-lettings.co.uk <https://www.progression-property.co.uk>