



room 2 25 Albany Street

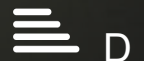
, Middlesbrough, TS1 4DB

£346 Per month

ARE YOU AND YOUR FRIENDS LOOKING FOR AN AFFORDABLE STUDENT PROPERTY? THEN LOOK NO FURTHER! THIS PROPERTY OFFERS SUPERB VALUE FOR MONEY ON A SINGLE ROOM LET BASIS / CENTRALLY LOCATED ON THE 'GRESHAM' SIDE OF MIDDLESBROUGH TOWN CENTRE, JUST OFF PRINCES ROAD, WITHIN A FEW MINUTES OF LINTHORPE ROAD AND THE UNIVERSITY OF TEESIDE / A TOTAL OF 4 BEDROOMS SHARING A BATHROOM / FULLY FURNISHED WITH BILLS INCLUDED / MODERN FIXTURES FITTINGS AND DECORATION / READY FOR NEW TENANTS TO MOVE INTO August 2024. Viewings are taking place now, call to arrange your appointment to avoid disappointment!

Viewing

Please contact our Progression Property Office on 01642 063352 if you wish to arrange a viewing appointment for this property or require further information.



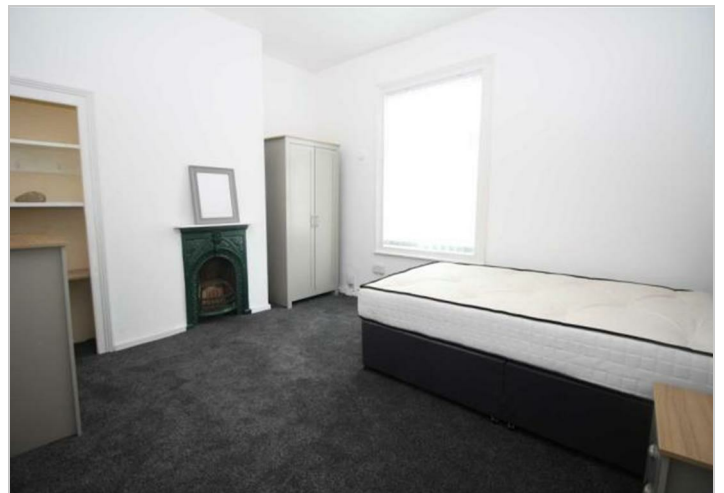
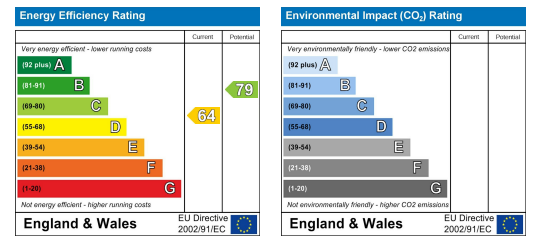
Floor Plan



Area Map



Energy Efficiency Graph



These particulars, whilst believed to be accurate are set out as a general outline only for guidance and do not constitute any part of an offer or contract. Intending purchasers should not rely on them as statements of representation of fact, but must satisfy themselves by inspection or otherwise as to their accuracy. No person in this firm's employment has the authority to make or give any representation or warranty in respect of the property.

329 Linthorpe Road, Middlesbrough, TS5 6AA

Tel: 01642 063352 Email: info@progression-lettings.co.uk <https://www.progression-property.co.uk>