



38 Cotswold Avenue

, Middlesbrough, TS3 8JN

£65,000

Nestled in a sought-after neighbourhood and offering a perfect blend of comfort and convenience, this delightful three-bedroom mid-terrace property is a fantastic choice for first-time buyers or investors.

Situated in close proximity to Middlesbrough town centre, this property enjoys easy access to local amenities, schools, and shopping options. The vibrant atmosphere of the town is just a stone's throw away, offering a plethora of dining, entertainment, and recreational choices.

Viewing

Please contact our Progression Property Office on 01642 063352 if you wish to arrange a viewing appointment for this property or require further information.



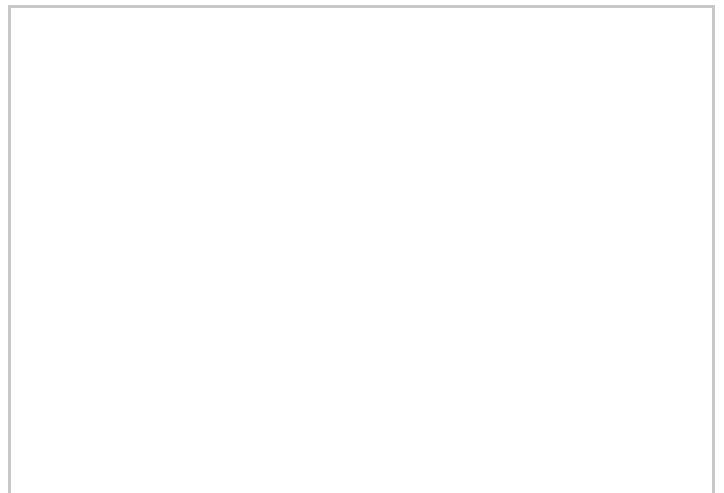
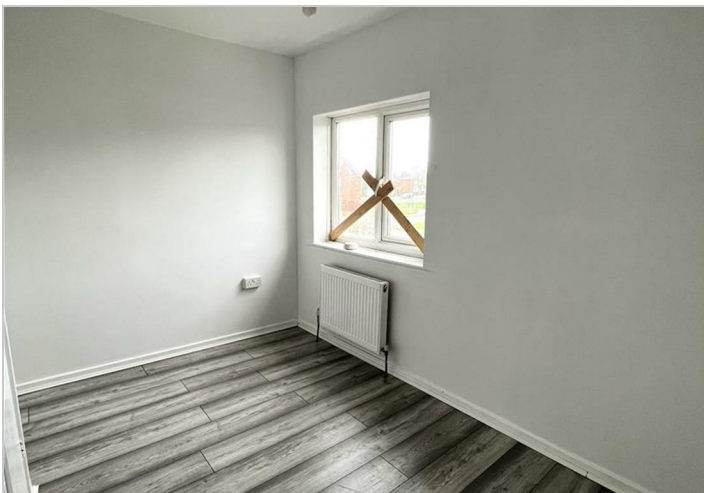
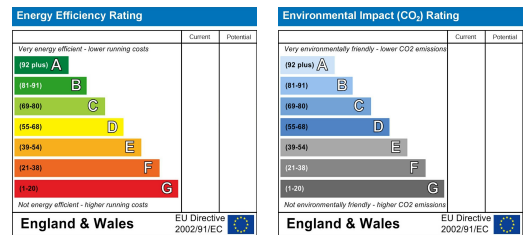
Floor Plan



Area Map



Energy Efficiency Graph



These particulars, whilst believed to be accurate are set out as a general outline only for guidance and do not constitute any part of an offer or contract. Intending purchasers should not rely on them as statements of representation of fact, but must satisfy themselves by inspection or otherwise as to their accuracy. No person in this firm's employment has the authority to make or give any representation or warranty in respect of the property.