



20 Gainsborough Road

Marton-In-Cleveland, Middlesbrough, TS7 8SB

Offers in excess of £110,000

A TWO BEDROOM INNER TERRACED PROPERTY HAVING RECENTLY BEEN REFURBISHED FROM TOP TO BOTTOM AND NOW BEING IDEAL FOR A FIRST TIME BUYER, YOUNG COUPLE OR ANYONE DOWNSIZING TO MOVE STRAIGHT IN WITHOUT THE WORRY OF HAVING TO CARRY OUT ANY ESSENTIAL WORKS, WHILST ENJOYING A POPULAR LOCATION WITHIN MARTON MANOR. THE PROPERTY OFFERS MODERN FIXTURES AND FITTINGS THROUGHOUT AND HAS BEEN DRESSED IN NEUTRAL COLOURS WHICH ADDS TO THE MODERN FEEL. IN BRIEF THE ACCOMMODATION CONSISTS OF AN ENTRANCE HALL, A MODERNISED KITCHEN WITH HIGH GLOSS FINISH FITTED UNITS, A WELL PROPORTIONED LOUNGE TO THE REAR WITH DOORS LEADING OUT INTO THE REAR GARDEN, TWO FIRST FLOOR DOUBLE BEDROOMS AND A BEAUTIFULLY REFURBISHED AND UPGRADED SHOWER ROOM. THERE ARE GARDENS TO FRONT AND REAR WITH THE ADDITIONAL BENEFIT OF A GARAGE. THE PROPERTY IS SOLD WITH VACANT POSSESSION / NO CHAIN SO THE POTENTIAL OF SWIFT OCCUPATION IS AVAILABLE FOR ANYONE NEEDING IT.

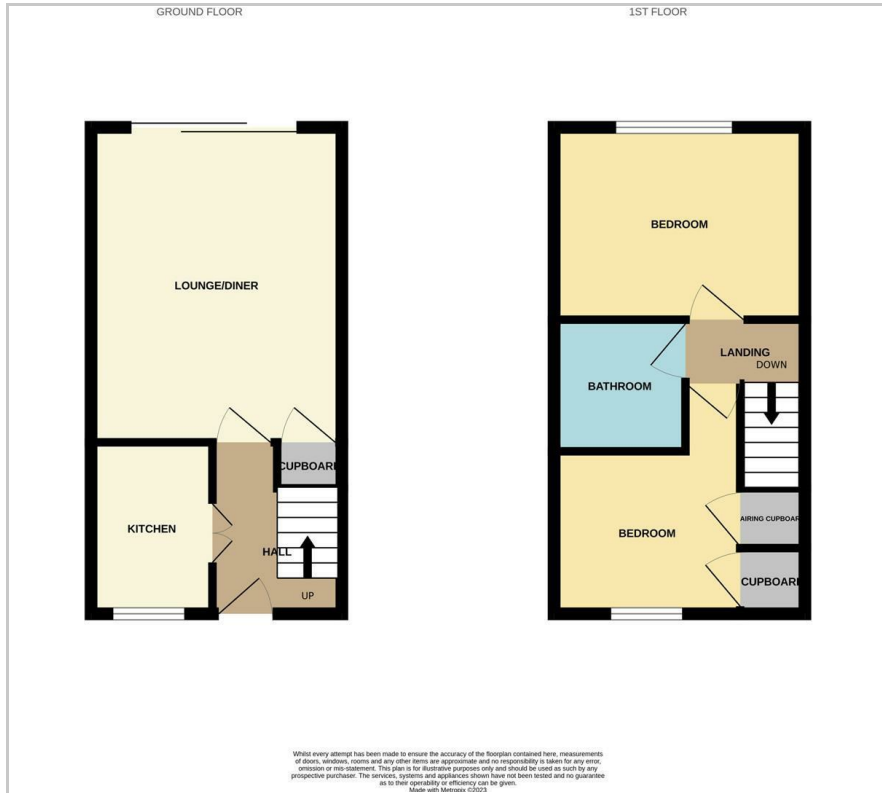
- EPC HAS BEEN ORDERED - RATING WILL BE UPDATED AS SOON AS COMPLETE
- ** VIEWINGS WILL COMMENCE THE WEEK STARTING 11TH MARCH - AS MINOR FINISHING OFF IS STILL TAKING PLACE WITHIN THE PROPERTY **

Viewing

Please contact our Progression Property Office on 01642 063352 if you wish to arrange a viewing appointment for this property or require further information.



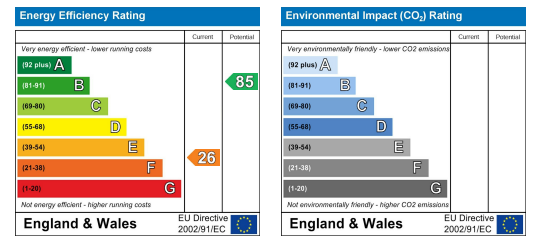
Floor Plan



Area Map



Energy Efficiency Graph



These particulars, whilst believed to be accurate are set out as a general outline only for guidance and do not constitute any part of an offer or contract. Intending purchasers should not rely on them as statements of representation of fact, but must satisfy themselves by inspection or otherwise as to their accuracy. No person in this firm's employment has the authority to make or give any representation or warranty in respect of the property.

329 Linthorpe Road, Middlesbrough, TS5 6AA

Tel: 01642 063352 Email: info@progression-lettings.co.uk <https://www.progression-property.co.uk>