



18 Pickering Grove

, Hartlepool, TS25 1NG

Asking price £150,000

A larger than average beautifully presented family home offered for sale with a long term sitting tenant

This semi-detached property was originally a well proportioned three bedroomed home but has been extended to add a fourth bedroom with en-suite bathroom and utility room to the ground floor.

The vendor prefers to sell with a sitting tenant paying £750 pcm rent who has been in place for 11 years and has no plans to leave.

The property is presented to an exceptional standard and boasts large gardens to the front and rear.

Viewings are welcomed so please call Progression Property today.

Viewing

Please contact our Progression Property Office on 01642 063352 if you wish to arrange a viewing appointment for this property or require further information.

- THREE FIRST FLOOR BEDROOMS
- GROUND FLOOR EXTENSION OFFERING 4TH EN-SUITE BEDROOM
- FRONT AND REAR GARDENS
- LONG TERM TENANT IN SITU
- CUL-DE-SAC
- BEAUTIFULLY PRESENTED



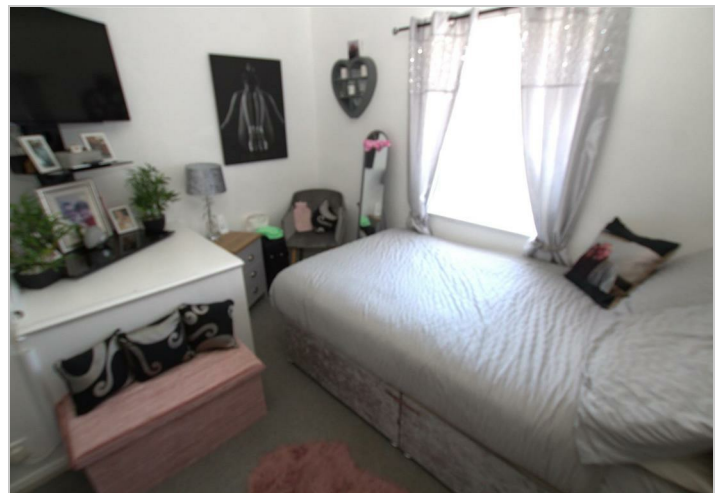
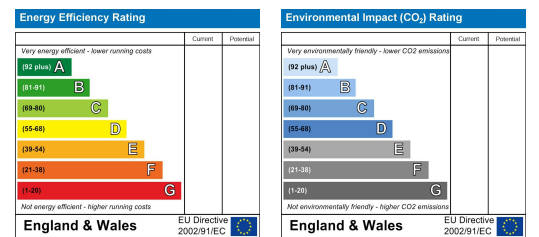
Floor Plan



Area Map



Energy Efficiency Graph



These particulars, whilst believed to be accurate are set out as a general outline only for guidance and do not constitute any part of an offer or contract. Intending purchasers should not rely on them as statements of representation of fact, but must satisfy themselves by inspection or otherwise as to their accuracy. No person in this firm's employment has the authority to make or give any representation or warranty in respect of the property.

329 Linthorpe Road, Middlesbrough, TS5 6AA

Tel: 01642 063352 Email: info@progression-lettings.co.uk <https://www.progression-property.co.uk>