



The Henley
Three bedroom home



Is the heart of your home in the kitchen or the lounge? With Henley it could be both!

If you like the action to be around the kitchen but still like to be sociable then the spacious kitchen/diner in the Henley is for you. There's a great space to cook, with a beautiful fitted kitchen, plus room to chat and even spill out into the garden through the double doors.

If you prefer to create a quieter, cosy atmosphere, then the lounge will be your perfect space for relaxing.

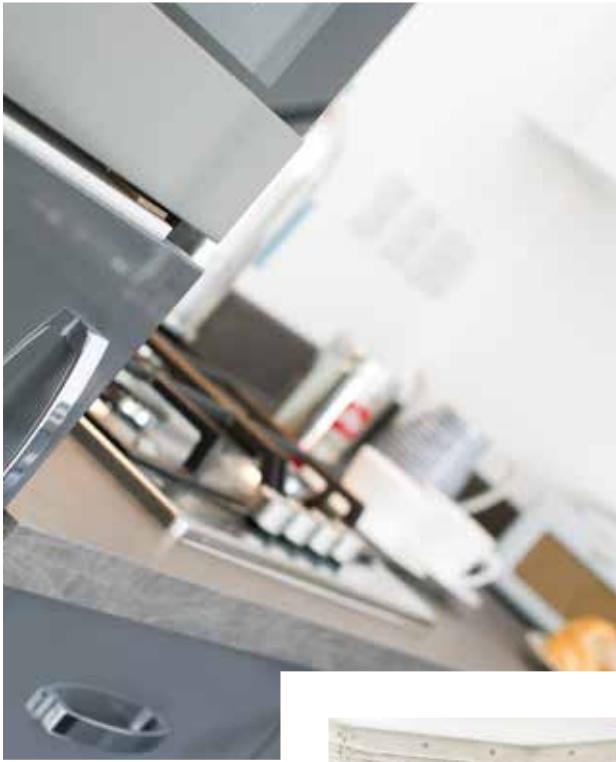
Upstairs, there are three well proportioned bedrooms, the master bedroom has a generous, modern en-suite shower room.

Two further bedrooms provide ample space for a family and there's a useful storage cupboard to keep things neat and tidy.

The house bathroom includes your choice of modern, stylish wall tiles.

**CONSUMER
CODE** FOR
HOME BUILDERS

This is a CGI illustration of the Henley house type. Please note that homes may differ from this illustration. For example, they may be handed (a reversed layout) and may be detached, semi-detached or terraced. Construction materials may also differ, including the roof tile colour, render or paved areas. Detailed plans and specifications are available for each plot and customers are asked to discuss this with the Sales Team when reserving their home.



The Henley is one of our most popular homes and for good reason. It's perfectly proportioned rooms offer you the space you need in every single room.



High spec fitted kitchen
With all the gadgets and features you'd expect.



Room to relax
A wide bay window fills the lounge with light.

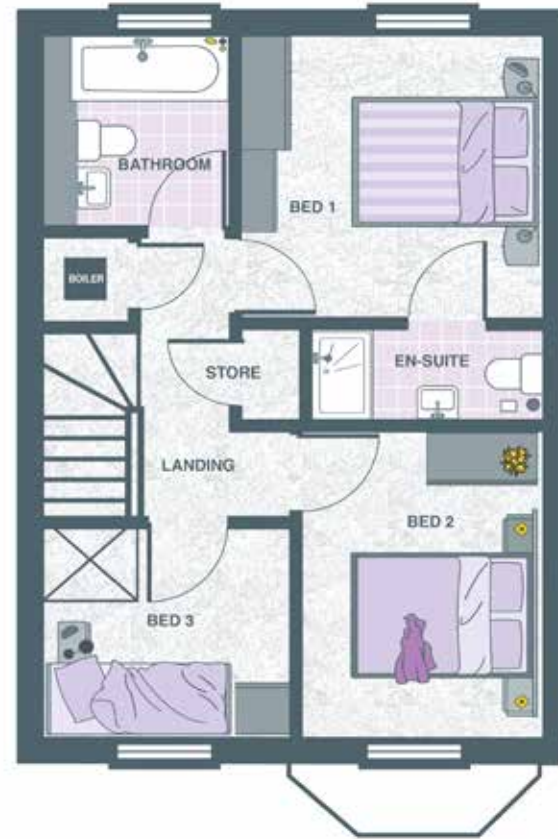


Welcome home
Step through your front door and into the Henley - you may never want to leave.



Clean and contemporary
Personalise your bathroom and en-suite with a choice of tiles.

Sq Ft: 943
Sq M: 87.6



Ground Floor

Hall	14' 5" x 6' 6"	4.39 x 1.98m
Cloaks	5' 6" x 3' 9"	1.67 x 1.14m
Lounge^	14' 5" x 11' 3"	4.39 x 3.42m
Kitchen / Dining	18' 2" x 10' 1"	5.53 x 3.07m
Store	Under stairs	

First Floor

Landing*	9' 11" x 9' 4"	3.02 x 2.84m	Bedroom 3	9' 4" x 7' 4"	2.84 x 2.23m
Bedroom 1	11' 4" x 10' 1"	3.45 x 3.07m	Bathroom	6' 8" x 6' 5"	2.03 x 1.95m
En-suite	9' x 3' 2"	2.80 x 1.03m	Store		
Bedroom 2	11' x 8' 5"	3.35 x 2.56m			

*Maximum Dimensions

^Excluding BayDimensions are approximate and rooms may differ slightly from plot to plot and across developments.