

AUGUST

ROUTE DU JAILLET

French Alps

▪ SIGNATURE COLLECTION ▪

the location

Megève dates back to the 13th century and, with its cobbled streets surrounded by enticing restaurants and boutiques, oozes Gallic ambience. At the foot of the majestic Mont Blanc mountain range, bordering Switzerland and Italy, traversed by two mountain streams, lies a regal resort. Skiing in Megève is a ski destination that was established in 1916 when the pastures of the French Rhone-Alps first caught the attention of the Baroness de Rothschild and flourished under her family's influence during the roaring 1920s.

In the words of Ariane De Rothschild herself: "Megève is like a sleeping beauty". Today, it remains an exclusive ski destination tailored to the wants of the modern beau monde skier traveller with diverse ski terrain that appeals to all types of skiers.

Fresh from the slopes, well-heeled guests have their pick of shopping at designer boutiques, sophisticated après-ski encounters, and an array of Michelin-starred restaurants.





the home

Conviviality is at the core of this French Alps home. Echoing the dramatic mountainous landscape that surrounds, this chalet-apartment is an enchanting setting from which you can enjoy unobstructed views and precious moments with loved ones.

Designed for seamless living, on and off the slopes, expect a high spec and beautifully styled space where groups of friends and families will be able to carve out their perfect Alpine lifestyle, in all seasons.

Generous lounging and dining areas are primed for gathering round and making memories, while two south-west facing viewing decks will mean that captivating mountain scenes and indescribable atmosphere will elevate every stay.

Three double bedrooms, a single and two ensembles alongside a family bath, will make time at home a simple pleasure. Just 600 metres from the village centre and 400 metres from "Le Jaillet" ski lift, whether you are in the mood to sip an espresso on the balcony or wish to join fellow Megève locals in exploring the piste from the Luge 4S Sledge, the magic of the French Alps is on your doorstep.



Architectural floor plan of a 1335 sq. ft. house. The plan includes a Living Room (21' x 27'), Dining Area (30'), Kitchen (12' x 17'), and a Balcony (26 sq. ft.). There are four bedrooms: Bedroom 1 (11' x 12'), Bedroom 2 (11' x 12'), Bedroom 3 (CH 2442, 8' x 10'), and Bedroom 4 (CH 2368, 6' x 10'). The house also features a Family Bath (3), a Full Bath, and a Corridor. Dimensions for various rooms and overall exterior measurements are provided.

TOTAL AREA

98 sqm, 1055 sq ft

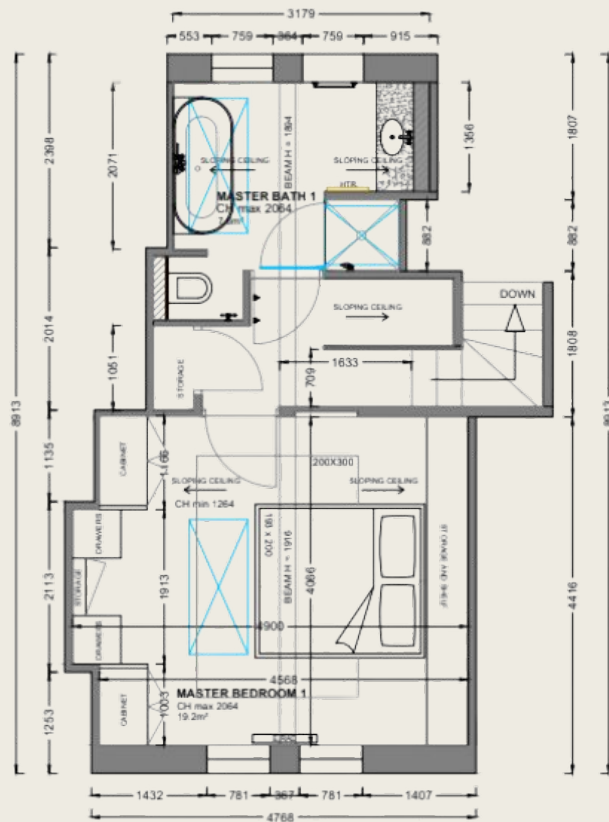
SPACE

- Entrance
- Kitchen
- Lounge and dining space
- 3 Double bedrooms
- 1 Single bedroom
- 1 Family bathroom
- 2 Ensuite bathrooms
- South West oriented
- Balconies
- Garage + 1 outdoor parking space



AUGUST

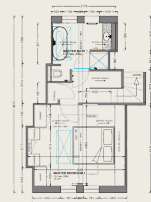
SECOND FLOOR



98 sqm, 1055 sq ft

SPACE

- Entrance
- Kitchen
- Lounge and dining space
- 3 Double bedrooms
- 1 Single bedroom
- 1 Family bathroom
- 2 Ensuite bathrooms
- South West oriented
- Balconies
- Garage + 1 outdoor parking space



AUGUST



▪ SIGNATURE COLLECTION ▪



▪ SIGNATURE COLLECTION ▪







Specifications

KITCHEN

Fully-equipped kitchen with all appliances

Range of local cook books

Marshall sound system

BEDROOMS

Hotel grade 300-thread-count bed sheets and towels

BATHROOMS

Hairdryers in all bathrooms

Hotel grade towels

OTHER

Open sky view

Wood plank floor

Games and books









[Click here to speak with an Advisor](#)

augustcollections.com