

AUGUST

VIA DEL GAROFANO

Rome

▪ PIED À TERRE COLLECTION ▪

VIA DEL GAROFANO

the location

Monti, nestled in the heart of Rome, stands as a captivating and historic neighborhood that effortlessly blends ancient charm with a vibrant modern lifestyle. Its central location places residents and visitors within walking distance of iconic landmarks such as the Colosseum and Roman Forum, for a memorable experience.

Specifically from your Pied À Terre, you will be steps away from the renowned Mercato Rionale Monti and many other favourites to live life authentically as a Rome local...

This is a neighborhood to embrace, offering a unique blend of Italian heritage, culture, and contemporary living. With its diverse culinary scene, trendy bars, and sense of community, Monti allows you to immerse yourself in Rome's bohemian ambiance and allure.

Punctuated by ivy-dressed buildings and cobble streets, Monti is an ideal destination from which you can explore the Eternal City at your own pace.



the home

Set in the heart of Rome's largest district, Monti, this exquisite two-bedroom apartment is part of the exclusive Pied À Terre Collection. Located on a quiet street, it offers the perfect blend of tranquility and prime urban living. Occupying the second floor of a five-story building and with an elevator, you will enjoy convenience on all levels.

Boasting a near-perfect layout and high ceilings, the design team had an excellent foundation to work with, and now the 106 sqm apartment is a stylish, sophisticated space that embodies Rome's allure.

The primary bedroom with en suite promises comfort and elegance, while the secondary bedroom is still generously-sized, decorated with a striking deep Roman red, and with access to the main bathroom that has been completely renovated.

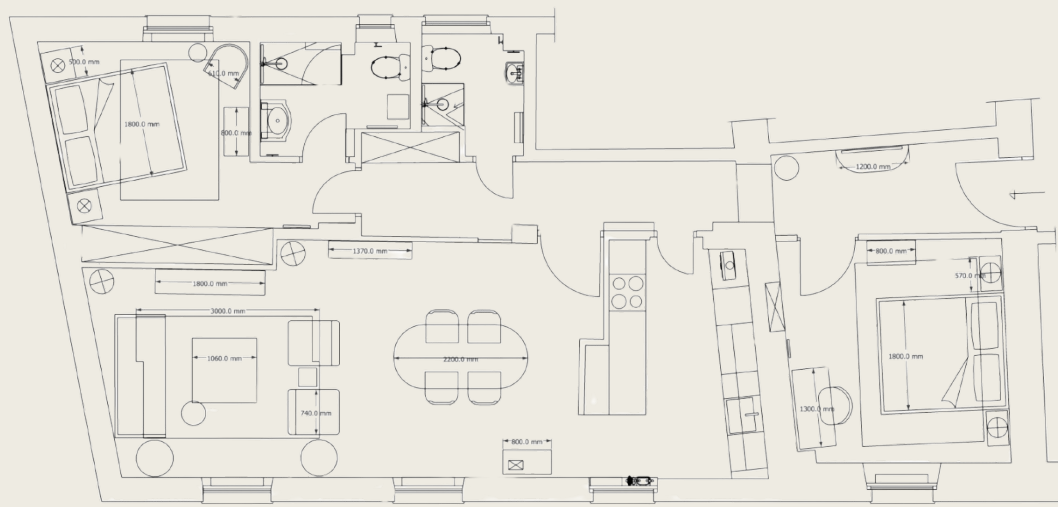
Moving through to the kitchen and reception room, there is seamless flow, ambiance and exceptional views, making it an ideal setting for relaxation and entertainment.



■ PIED À TERRE COLLECTION ■

the floorplan

Not to scale. All measurements
and features shown are
approximate and for illustrative
purposes only.



TOTAL AREA

106 sqm / 1140 sqft

SPACE

- Entrance
- Double bedroom
- Fully equipped Kitchen
- Open dining and living room
- Family bathroom
- Primary bedroom with ensuite



AUGUST

VIA DEL GAROFANO











▪ PIED À TERRE COLLECTION ▪



Specifications

KITCHEN

Fully-equipped kitchen with all appliances

Range of local cook books

BEDROOMS

Hotel grade 300-thread-count bed sheets and towels

AC units in bedrooms

BATHROOMS

Hairdryers in all bathrooms

OTHER

Open sky view

Wood plank floor

Marshall sound system

Games and books















[Click here to speak with an Advisor](#)

augustcollections.com