



6 Burberry Avenue, Nottingham, NG15 7EZ

Offered to the market this well presented three DOUBLE bedroom town house, providing good access to all local amenities and good performing schools. Internally the property comprises of an entrance hall, downstairs WC/cloaks, lounge, kitchen/diner, three bedrooms, en suite and a family bathroom. Externally the property comprises of rear enclosed garden and a allocated parking space.

Price £190,000

6 Burberry Avenue

Hucknall, Nottingham, NG15 7EZ



- POPULAR LOCATION
- VIEWING ADVISED
- THREE BEDROOMS
- EN SUITE TO BEDROOM ONE
- ENCLOSED REAR GARDEN
- ALLOCATED PARKING SPACE
- EPC RATING B
- COUNCIL TAX BAND C

FRONT ELEVATION

ENTRANCE HALL

DOWNSTAIRS WC/CLOAKS

LOUNGE

12'5" x 14'9" (3.8 x 4.5)

KITCHEN/DINER

9'10" x 12'5" (3 x 3.8)

BEDROOM ONE

16'0" max x 17'7" max (4.9 max x 5.36 max)

EN SUITE

BEDROOM TWO

11'2" x 12'5" (3.42 x 3.8)

BEDROOM THREE

8'0" x 12'6" max (2.46 x 3.82 max)

FAMILY BATHROOM

ENCLOSED REAR GARDEN

ALLOCATED PARKING TO THE REAR

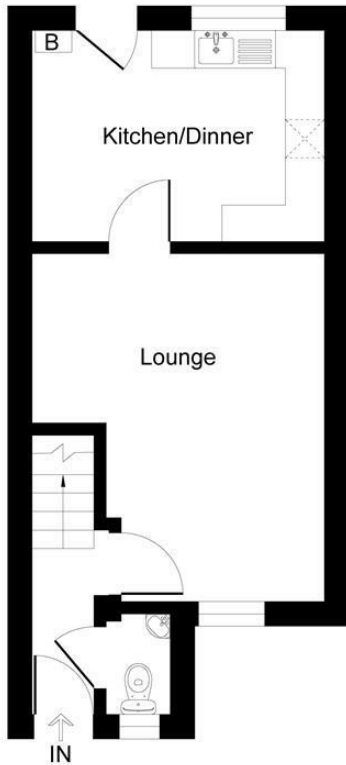


Directions

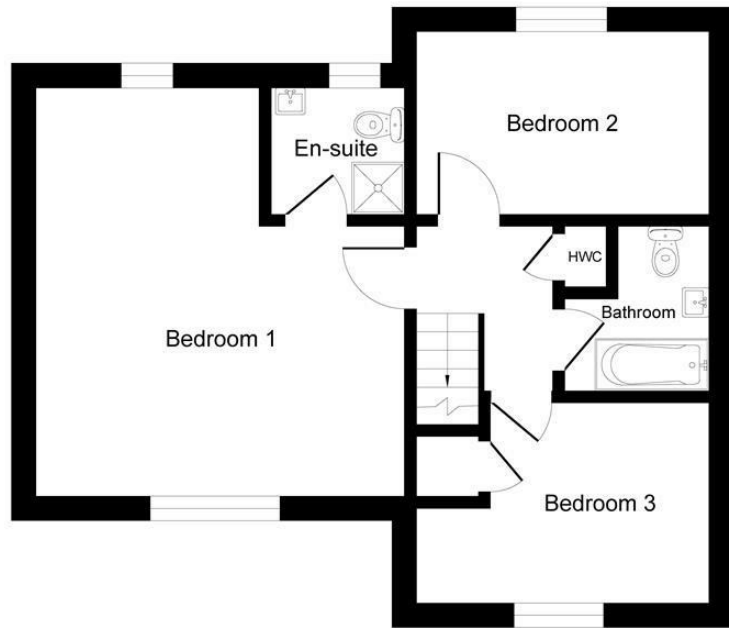


Floor Plan

Burberry Close Hucknall NG15 7EZ



Ground Floor



First Floor

Illustration for identification purposes only, measurements are approximate, not to scale.

These particulars, whilst believed to be accurate are set out as a general outline only for guidance and do not constitute any part of an offer or contract. Intending purchasers should not rely on them as statements of representation of fact, but must satisfy themselves by inspection or otherwise as to their accuracy. No person in this firm's employment has the authority to make or give any representation or warranty in respect of the property.

