



93 Glen Road, Loughborough, LE11 2GF

We are delighted to offer this immaculate THREE bedroom detached property to the market. Internally the property comprises of entrance hallway, lounge, kitchen/diner, downstairs cloaks/WC, three bedrooms, bedroom one with en suite and a family bathroom. The property externally comprises driveway for two/three vehicles and a rear enclosed garden. An internal inspection is highly recommended to appreciate the property on offer.

Price £270,000

93 Glen Road

, Loughborough, LE11 2GF



- IMMACULATE DETACHED PROPERTY
- TWO BATHROOMS
- COUNCIL BAND D
- THREE BEDROOMS
- VIEWING ADVISED
- POPULAR DEVELOPMENT
- EPC RATING B

FRONT ELEVATION

ENTRANCE HALLWAY

DOWNSTAIRS WC/CLOAKS

LOUNGE

23'11" x 12'1"ax (7.29 x 3.7max)

KITCHEN DINER

22'7" x 7'8" max (6.89 x 2.36 max)

STAIRS AND LANDING

BEDROOM ONE

15'8" x 9'6" max (4.8 x 2.9 max)

EN SUITE

BEDROOM TWO

12'4" x 11'1" max (3.77 x 3.4 max)

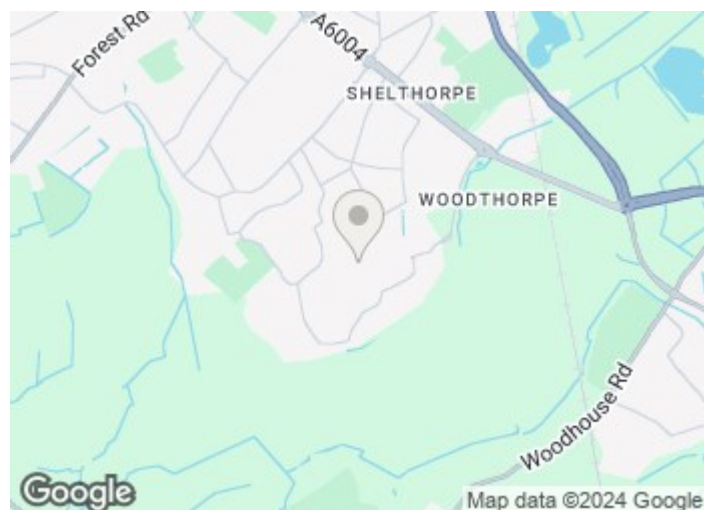
BEDROOM THREE

12'5" x 10'9" max (3.8 x 3.3 max)

FAMILY BATHROOM

REAR ENCLOSED GARDEN

DRIVEWAY

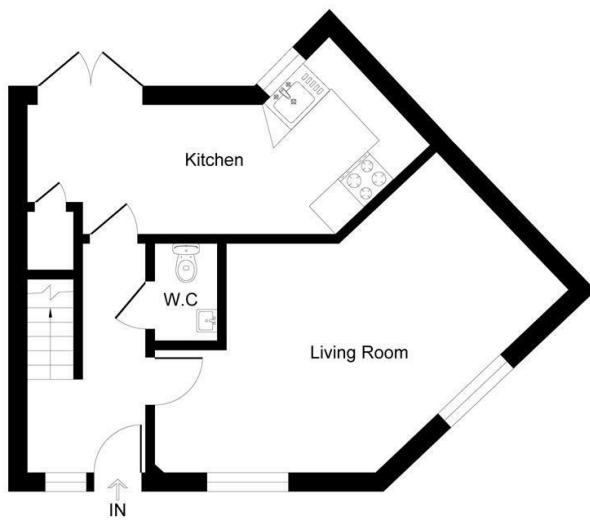


[Directions](#)

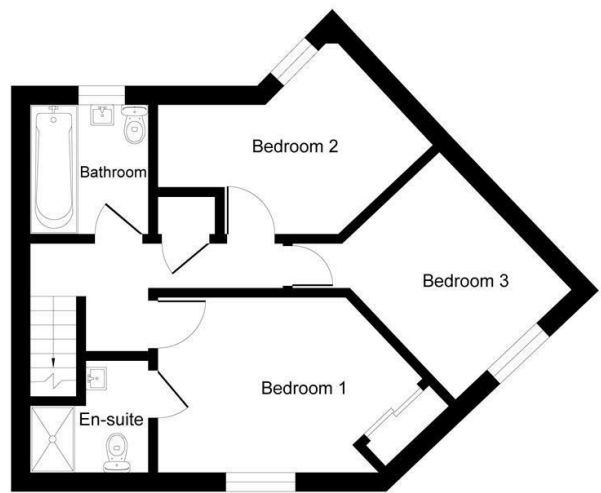


Floor Plan

Glen Road Loughborough LE11 2GF



Ground Floor



First Floor

Illustration for identification purposes only, measurements are approximate, not to scale.

These particulars, whilst believed to be accurate are set out as a general outline only for guidance and do not constitute any part of an offer or contract. Intending purchasers should not rely on them as statements of representation of fact, but must satisfy themselves by inspection or otherwise as to their accuracy. No person in this firm's employment has the authority to make or give any representation or warranty in respect of the property.

