

5 Tile Lane, Nuneaton, CV10 9GD

We are delighted to be offering for sale this well presented three storey semi detached family home, providing good access for all local amenities and good performing schools. Internally the property comprises of spacious accommodation set over three floors, having three double bedrooms, three bathroom, two reception rooms, fitted kitchen and separate utility room. There is an enclosed rear garden and driveway to side. An internal inspection is highly recommended to appreciate the property on offer

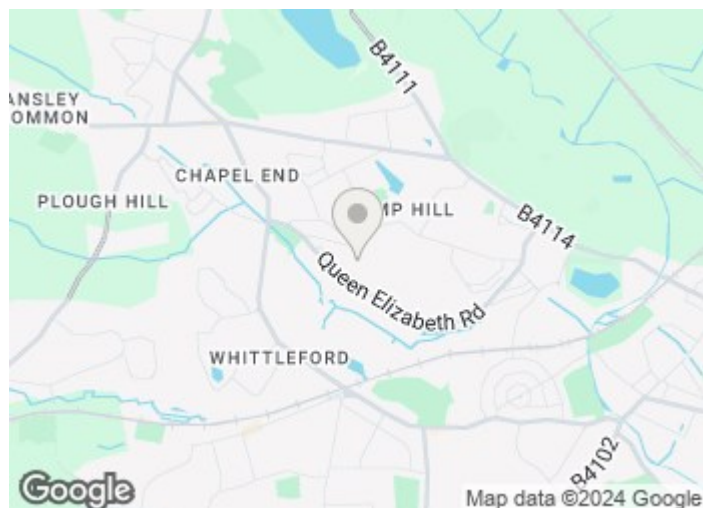
Price Guide £230,000

5 Tile Lane

, Nuneaton, CV10 9GD



- POPULAR LOCATION
- VIEWING ADVISED
- THREE DOUBLE BEDROOMS
- THREE BATHROOMS
- COUNCIL TAX BAND B
- EPC RATING B
- 107 SQUARE METRES



[Directions](#)



Floor Plan

5 Tile Lane CV10 9GD

Approximate Gross Internal Floor Area = 102.5 sq m / 1104 sq ft

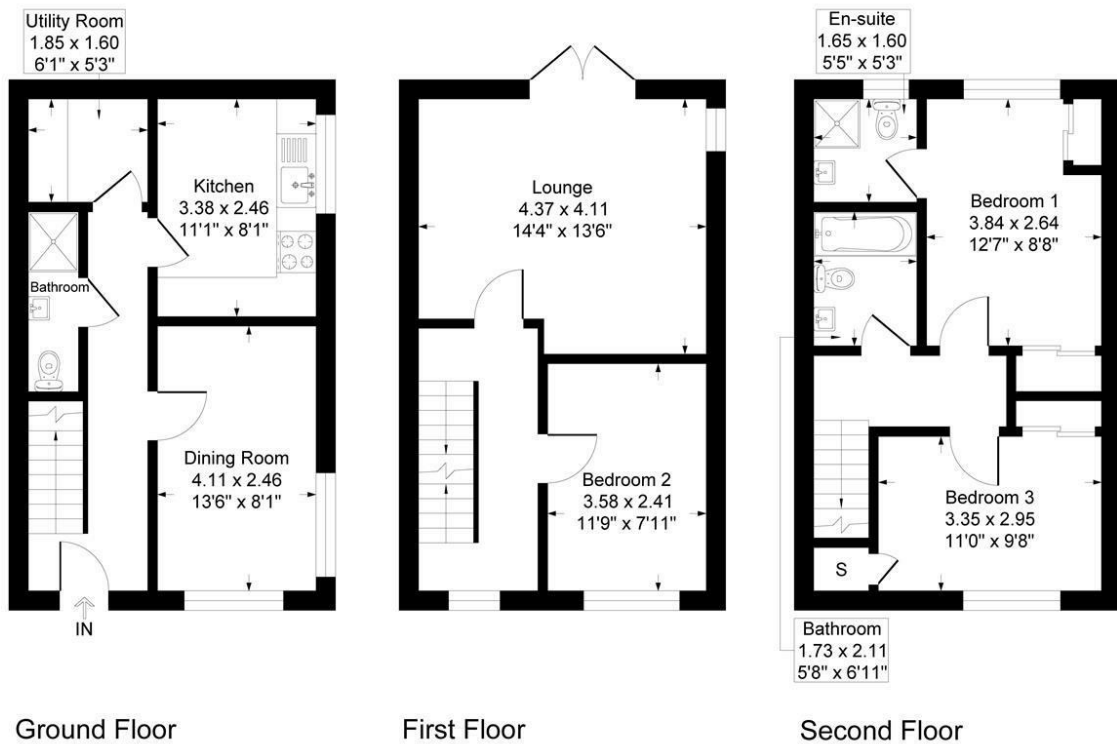


Illustration for identification purposes only, measurements are approximate, not to scale.

These particulars, whilst believed to be accurate are set out as a general outline only for guidance and do not constitute any part of an offer or contract. Intending purchasers should not rely on them as statements of representation of fact, but must satisfy themselves by inspection or otherwise as to their accuracy. No person in this firm's employment has the authority to make or give any representation or warranty in respect of the property.

