



Minehead Street, Leicester, LE3

3  1  2  D 

 **Sell MyHome**<sup>TM</sup>  
.co.uk



- 3 BEDROOM SEMI DETACHED HOME • IDEAL LOCATION
- CHAIN FREE • OFFERS WELCOMED
- IDEAL FOR FIRST TIME BUYERS OR INVESTORS • CORNER PLOT
- VIEWING HIGHLY ADVISED

Being sold via Secure Sale online bidding. Terms & Conditions apply. Starting Bid £175,000.

We are pleased to present to the market this spacious chalet style three bedroom semi detached house. The property could make an excellent family home or a suitable investment opportunity. This property is offered on a chain free and vacant possession basis.

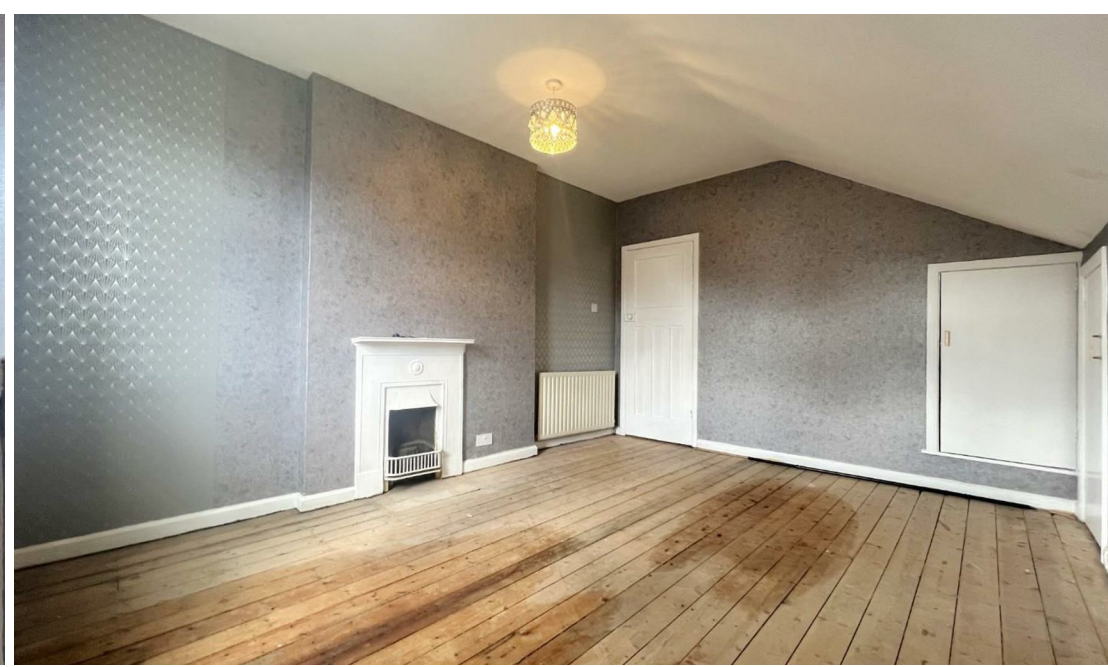
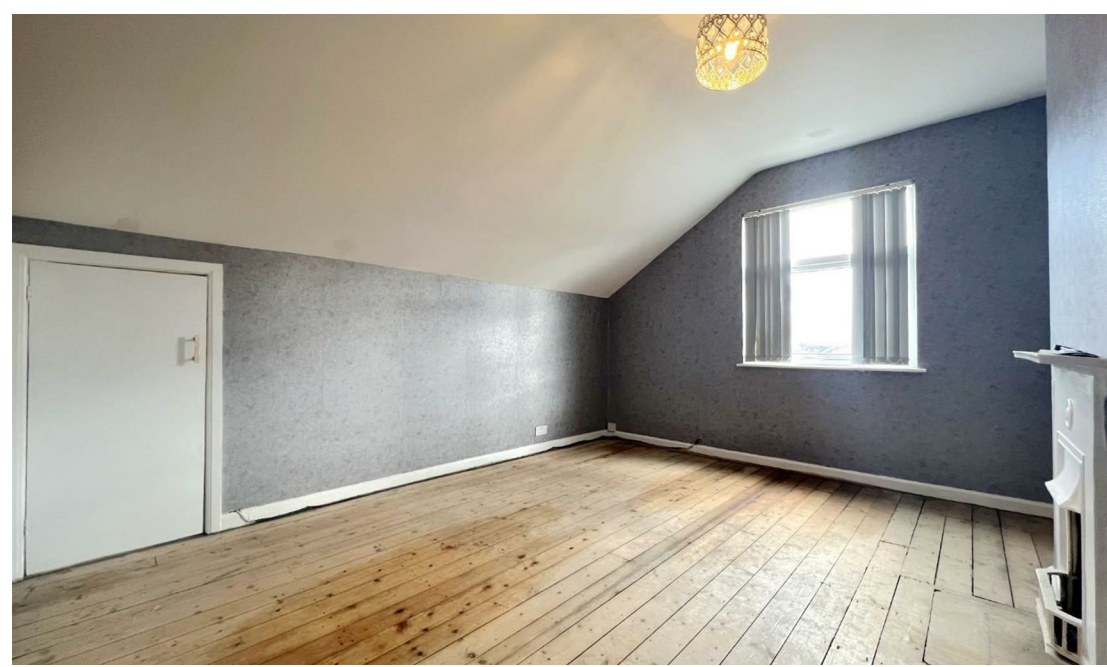
The ground floor includes two well sized reception rooms, a bedroom, a bathroom with three piece suite, a modernised kitchen and conservatory. To the upper floor are two generously sized bedrooms with eaves storage. The property benefits from double glazing and gas central heating. Externally, the property offers a front yard with offroad parking and a low maintenance garden.

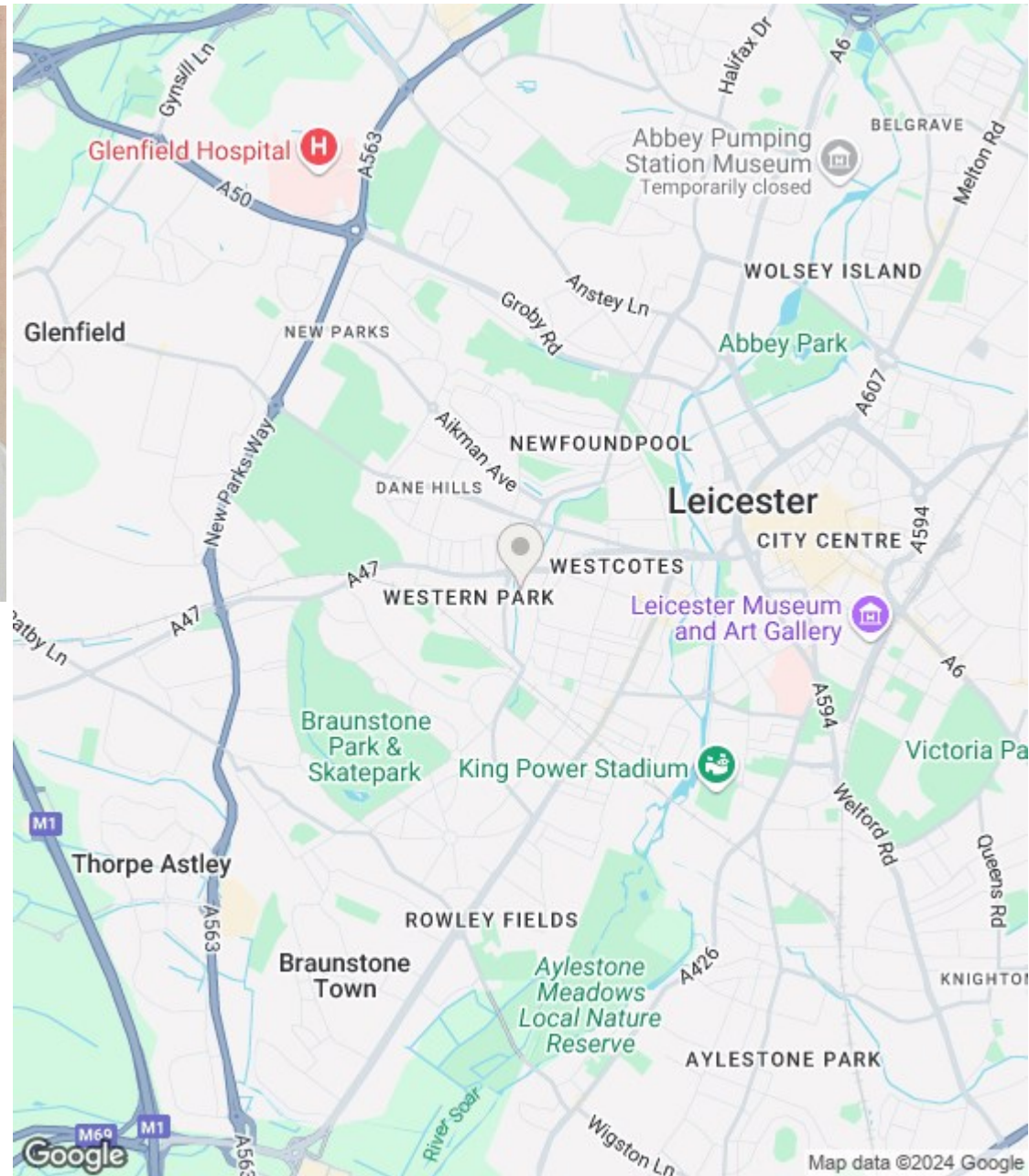
Terms and Conditions apply, please request full terms and conditions from our auction partners Pattinsons.



Price Guide: £175,000







### Energy Efficiency Rating

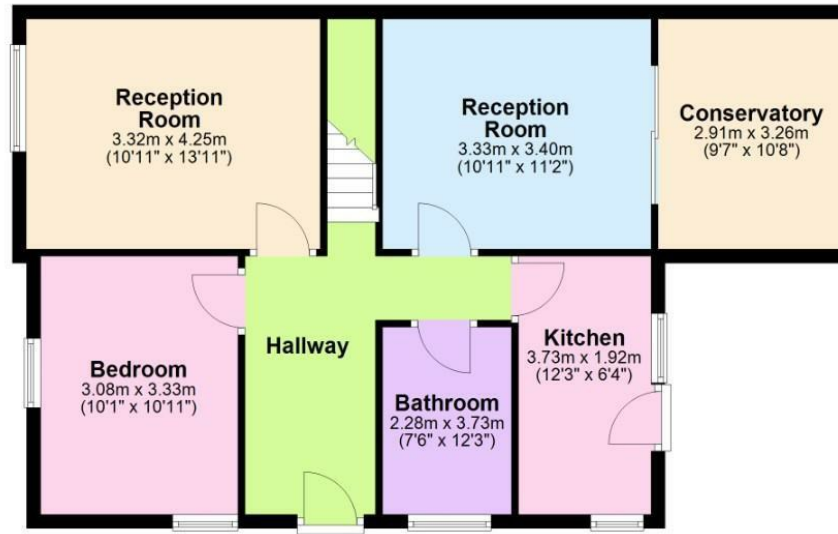
	Current	Potential
Very energy efficient - lower running costs		
(92 plus) <b>A</b>		
(81-91) <b>B</b>		<b>86</b>
(69-80) <b>C</b>		
(55-68) <b>D</b>	<b>67</b>	
(39-54) <b>E</b>		
(21-38) <b>F</b>		
(1-20) <b>G</b>		
Not energy efficient - higher running costs		
<b>England &amp; Wales</b>	EU Directive 2002/91/EC	

### Environmental Impact (CO<sub>2</sub>) Rating

	Current	Potential
Very environmentally friendly - lower CO <sub>2</sub> emissions		
(92 plus) <b>A</b>		
(81-91) <b>B</b>		<b>86</b>
(69-80) <b>C</b>	<b>73</b>	
(55-68) <b>D</b>		
(39-54) <b>E</b>		
(21-38) <b>F</b>		
(1-20) <b>G</b>		
Not environmentally friendly - higher CO <sub>2</sub> emissions		
<b>England &amp; Wales</b>	EU Directive 2002/91/EC	

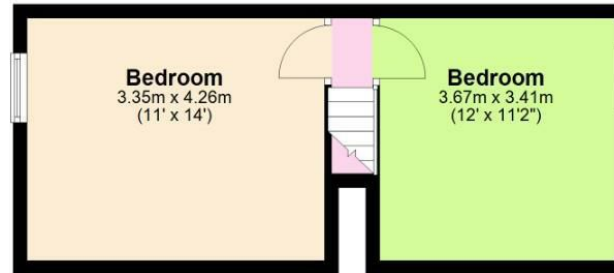
## Ground Floor

Approx. 75.1 sq. metres (808.3 sq. feet)



## First Floor

Approx. 28.6 sq. metres (307.5 sq. feet)



Total area: approx. 103.7 sq. metres (1115.8 sq. feet)

All measurements are approximate.  
Plan produced using PlanUp.

(1) MONEY LAUNDERING REGULATIONS: Intending purchasers will be asked to produce identification documentation at a later stage and we would ask for your co-operation in order that there is no delay in agreeing the sale. (2) These particulars do not constitute part or all of an offer or contract. (3) The description, measurements & specifications indicated have been approved by the Vendor, for guidance only and as such must be considered incorrect. While every effort has been made to ensure the accuracy of the information provided, we cannot be held responsible for any errors or omissions. Potential buyers are advised to recheck measurements before committing to any expense. (4) We have not tested any apparatus, equipment, fixtures or services and it is in the buyers interest to check the working condition of any appliances. (5) Financial Advice: Any financial information or advice provided in this brochure is not intended as financial or legal advice. We recommend that you seek independent financial and legal advice before making any decisions regarding property transactions. (6) Where an EPC, or a Home Report (Scotland only) is held for this property, it is available for inspection at the branch by appointment. If you require a printed version of a Home Report, you will need to pay a reasonable production charge reflecting printing and other costs. Energy Performance Certificates are available upon request. EPC ratings and related details are accurate as of the date of publication, but may change over time. (7) We are not able to offer an opinion either written or verbal on the content of these reports and this must be obtained from your legal representative. (8) Subject to Availability: All properties and prices are subject to availability and may be withdrawn or amended without notice. We do not guarantee the continued availability of any property listed in this brochure. (9) Third-Party Services: Any references to third-party services, such as solicitors, surveyors, or financial advisors, are for information only. We do not endorse or recommend any particular service provider. (10) Whilst we take care in preparing these reports, a buyer should ensure that his/her legal representative confirms as soon as possible all matters relating to title including the extent and boundaries of the property and other important matters before exchange of contracts. (11) Viewing Arrangements: Viewings of properties are by appointment only and should be arranged through the estate agent. (12) Legal Information: Buyers should verify all legal and planning details with the relevant authorities and professionals before proceeding with a purchase.