



## 1 Paton Court, Nottingham, NG14 6RL

GUIDE PRICE £160,000 - £170,000

We are pleased to bring to the market this well presented two bedroomed quarter house. The property is located at the edge of Calverton village in a quite cul de sac. The property provides good access for all local amenities. Internally the property comprises of entrance hall, open kitchen/ lounge living area, downstairs W.C/cloakroom, two bedrooms and a family bathroom. The property has gas central heating, is fully double glazed and has an allocated parking space. An internal inspection is highly recommended to appreciate the property on offer.

**Guide Price £160,000**

# 1 Paton Court

Calverton, Nottingham, NG14 6RL



- POPULAR LOCATION
- OPEN PLAN LIVING
- EPC RATING C
- QUARTER HOUSE
- ALLOCATED PARKING
- GUIDE PRICE £160,000 - £170,000
- TWO DOUBLE BEDROOMS
- COUNCIL BAND C

FRONT ELEVATION

DOWNSTAIRSWC/ CLOAKROOM

LOUNGE

11'5" x 15'8" max (3.5 x 4.8 max )

KITCHEN

7'6" x 9'0" (2.3 x 2.75)

STAIRS AND LANDING

BEDROOM ONE

9'10" x 8'8" (3 x 2.66)

FAMILY BATHROOM

5'6" x 6'2" (1.7 x 1.89)

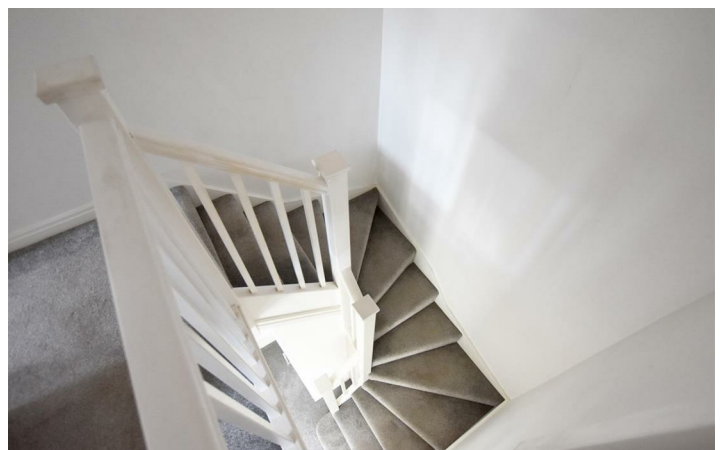
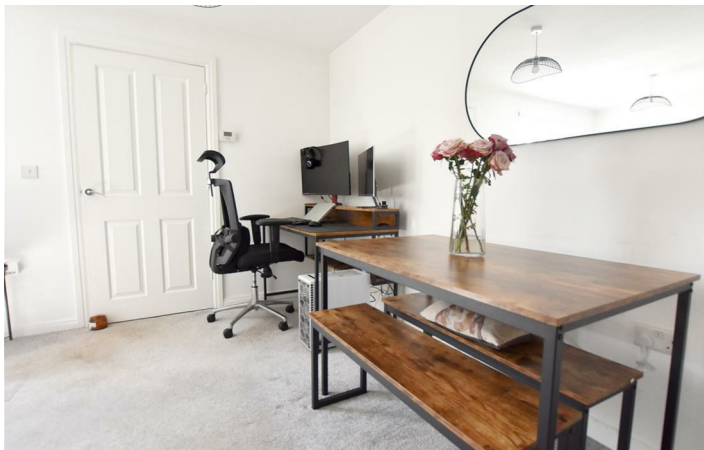
BEDROOM TWO

10'2" x 6'10" (3.10 x 2.1)

ALLOCATED PARKING SPACE

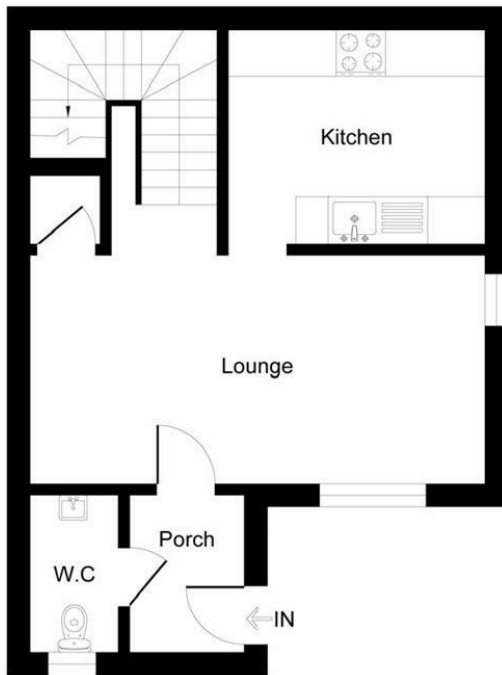


Directions

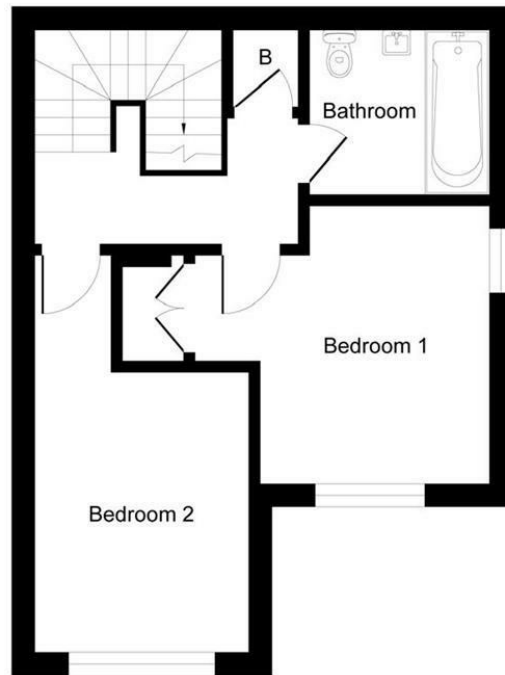


# Floor Plan

## 1 Paton court NG14 6RL



Ground Floor



First Floor

Illustration for identification purposes only, measurements are approximate, not to scale.

These particulars, whilst believed to be accurate are set out as a general outline only for guidance and do not constitute any part of an offer or contract. Intending purchasers should not rely on them as statements of representation of fact, but must satisfy themselves by inspection or otherwise as to their accuracy. No person in this firm's employment has the authority to make or give any representation or warranty in respect of the property.

