



185 Park Rd, Blackpool, FY1 5PE

We welcome to the market a chain free ready to walk into three bedroom garden fronted mid terrace home. This property has generous room sizes throughout and would make a great family home. Briefly comprising, vestibule, entrance hall, lounge with bay window. Second reception or dining room, open plan kitchen and utility area all to the ground floor. On the first floor we have three great sized bedrooms and a family bathroom. Externally there is gardens front and rear.

Price £115,000

185 Park Rd

, Blackpool, FY1 5PE



- Bay fronted three bedroom mid terrace home
- West facing rear garden
- EPC rating C
- No chain
- Walking distance to Stanley park
- Good standard throughout
- Two reception rooms & utility

External

Entrance hall

Laminate flooring, stairs to the first floor, understairs storage.

Lounge

16'10" x 9'1" (5.15 x 2.77)

Spacious and bright lounge with UPVc double glazed bay window to the front aspect, carpeted, radiator, double doors opening into the second reception room & kitchen.

Dining room / second reception

13'9" x 9'11" (4.2 x 3.04)

Spacious and bright second reception room or dining area open to the kitchen, , laminate flooring, UPVc double glazed door opening into the utility. Radiator, double doors leading to the lounge.

Kitchen

8'10" x 6'5" (2.71 x 1.98)

Modern kitchen with fitted white wall and base units, granite worktops, sink unit with mixer tap, laminate flooring. Oven with four ringed gas hob & extractor hood. Part tiled walls, plumbed for washer.

Utility

Plumbed for washer / dryer laminate flooring, storage and worktops.

Landing

Carpeted, entrance to the attic

Bedroom one

13'6" x 9'9" (4.12 x 2.98)

Lovely bedroom, UPVc double glazed bay window with blinds, carpeted & radiator.

Bathroom

Bath with shower over, vanity unit with mixer tap, obscure UPVc double glazed window, storage cupboard housing the combi boiler. Chrome heated towel rail, Wc.

Bedroom two

13'1" x 9'8" (3.99 x 2.95)

Double bedroom with UPVc double glazed window overlooking the rear garden, radiator & carpeted.

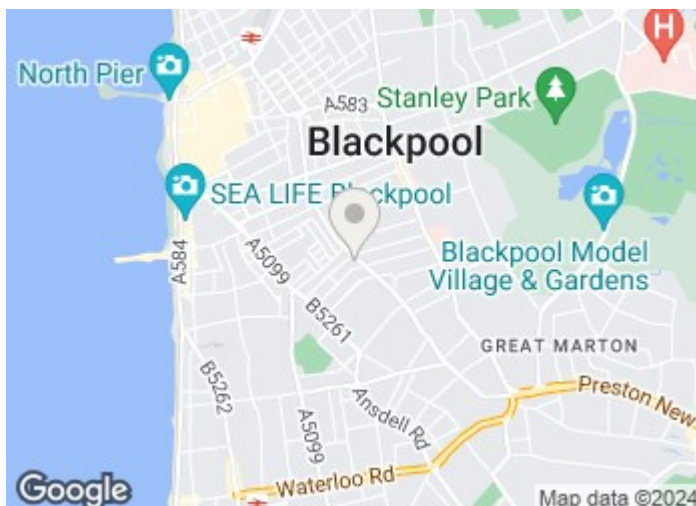
Bedroom three

9'8" x 6'2" (2.97m x 1.90)

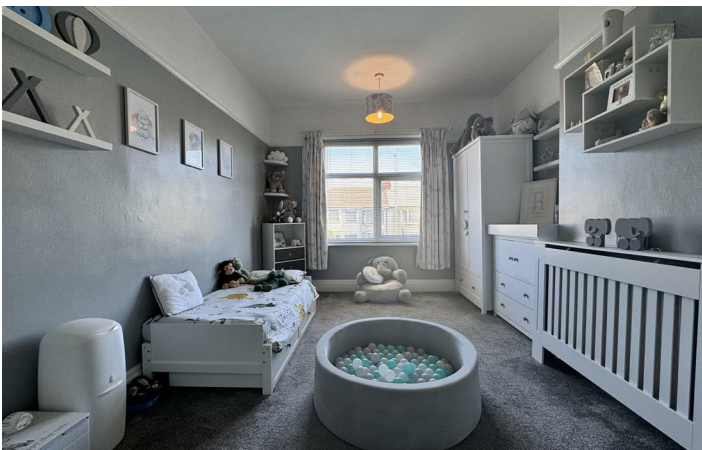
Great sized third bedroom, UPVc double glazed windows, blinds, carpeted & radiator.

Rear garden

Paved west facing rear garden.



Directions



Floor Plan

These particulars, whilst believed to be accurate are set out as a general outline only for guidance and do not constitute any part of an offer or contract. Intending purchasers should not rely on them as statements of representation of fact, but must satisfy themselves by inspection or otherwise as to their accuracy. No person in this firm's employment has the authority to make or give any representation or warranty in respect of the property.

