



38 Kimbolton Way, Derby, DE24 5AT

OFFERED WITH NO UPWARD CHAIN

New to the market this spacious four bedroom detached family home providing good access to all local amenities and good performing schools. Internally the property comprises of entrance hallway, lounge, kitchen/diner, utility room, downstairs WC, four bedrooms with bedroom one having an en suite shower room and a family bathroom. Externally the property comprises of driveway leading to a garage, lawn area and to the rear an enclosed rear garden. An internal inspection is highly recommended to appreciate the high standard of accommodation on offer.

Price £290,000

38 Kimbolton Way

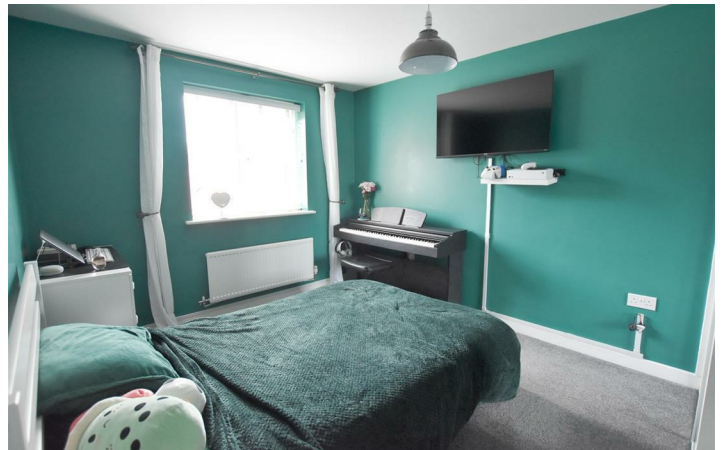
Boulton Moor, Derby, DE24 5AT



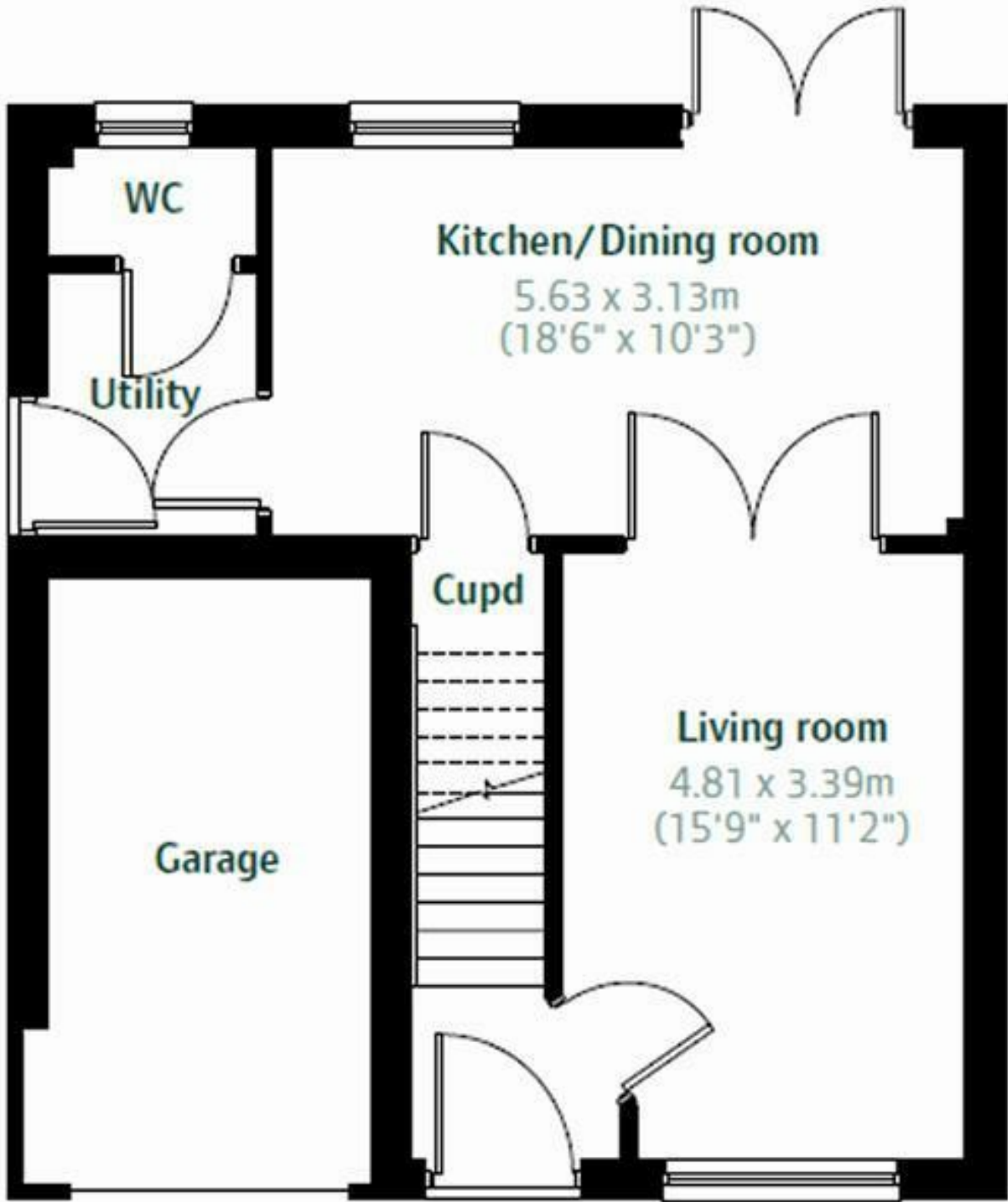
- MODERN FOUR BEDROOM DETACHED FAMILY HOME
- BUILT IN 2016 ON THE BUTTERCUP LEYS BOULTON MOOR DEVELOPMENT
- NO UPWARD
- SOLAR PANELS
- NEW KITCHEN IN 2022
- VIEWING ADVISED
- POPULAR LOCATION
- EPC RATING B
- COUNCIL TAX BAND D



Directions



Floor Plan



These particulars, whilst believed to be accurate are set out as a general outline only for guidance and do not constitute any part of an offer or contract. Intending purchasers should not rely on them as statements of representation of fact, but must satisfy themselves by inspection or otherwise as to their accuracy. No person in this firm's employment has the authority to make or give any representation or warranty in respect of the property.

