

3 Hornbeam Way, Burton-On-Trent, DE14 3FZ

An immaculate four bedroom modern detached home situated within a popular development, close to all local amenities and good access to the good performing schools. The property benefits from a lounge diner spanning across the rear of the property with a fully fitted kitchen to the front, useful utility room with side access door and four well-proportioned bedrooms to the first floor. An internal inspection is highly recommended to appreciate the property on offer.

The property is subject to an annual service charge in the region of £170.00. We always recommend buyers to get their legal adviser to verify these details prior to exchange of contracts.

Price £310,000

3 Hornbeam Way

Branston, Burton-On-Trent, DE14 3FZ



- POPULAR LOCATION
- VIEWING ADVISED
- SPACIOUS HOME
- FOUR BEDROOMS
- DRIVEWAY WITH GARAGE
- EPC RATING B
- COUNCIL TAX BAND D

FRONT ELEVATION

ENTRANCE HALLWAY

MODERN FITTED KITCHEN
3.47 x 2.18

UTILITY ROOM

WC/CLOAKS

LOUNGE/DINER
7.5 x 3.2

BEDROOM ONE
4.35 x 3.17

EN SUITE SHOWER ROOM

BEDROOM TWO
4.35 x 3.17

BEDROOM THREE
3.72 x 2.7

BEDROOM FOUR
1.92 x 3.72

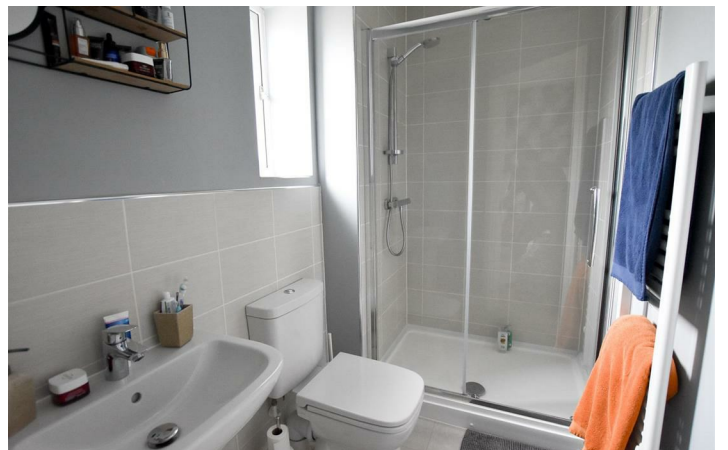
FAMILY BATHROOM

DRIVEWAY LEADING TO GARAGE

REAR ENCLOSED GARDEN



[Directions](#)



Floor Plan

These particulars, whilst believed to be accurate are set out as a general outline only for guidance and do not constitute any part of an offer or contract. Intending purchasers should not rely on them as statements of representation of fact, but must satisfy themselves by inspection or otherwise as to their accuracy. No person in this firm's employment has the authority to make or give any representation or warranty in respect of the property.

