

93 Granville Street, Swadlincote, DE11 7JH

New to the market this well presented town house which provides good access for all local amenities and good performing schools. Internally the property offers entrance hall, modern fitted kitchen, downstairs WC, Lounge, Three bedrooms, with an additional study en suite to bedroom one and a family bathroom. Externally there is an allocated parking and enclosed rear garden. A viewing is recommended by the agent to appreciate the accommodation on offer.

Price £185,000

93 Granville Street

Woodville, Swadlincote, DE11 7JH



- SPACIOUS PROPERTY
- VIEWING ADVISED
- EPC RATING B
- THREE BEDROOMS WITH STUDY ROOM
- ALLOCATED PARKING SPACE
- COUNCIL TAX BAND C
- POPULAR LOCATION
- REAR GARDEN

FRONT ELEVATION

ENTRANCE HALLWAY

MODERN FITTED KITCHEN

9'2" x 7'2" (2.8 x 2.2)

LOUNGE

14'3" x 11'1" (4.35 x 3.4)

BEDROOM TWO

13'11" x 8'6" (4.25 x 2.6)

FAMILY BATHROOM

BEDROOM THREE

9'10" x 7'2" (3 x 2.2)

STUDY ROOM

6'2" x 5'9" (1.9 x 1.76)

BEDROOM ONE

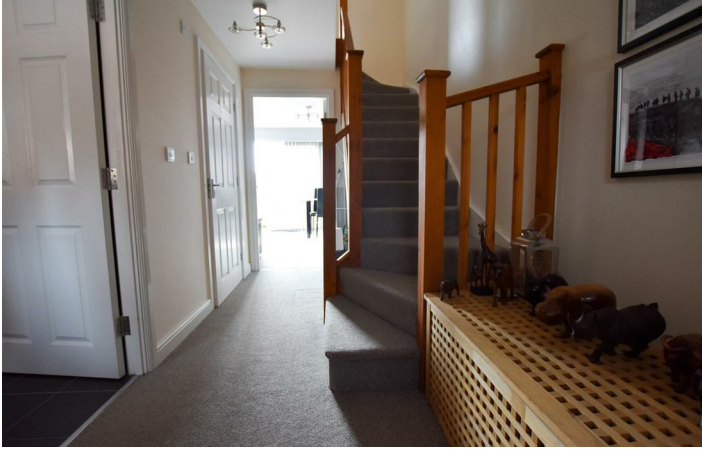
11'1" x 10'7" max (3.4 x 3.25 max)

EN SUITE

REAR ENCLOSE GARDEN



Directions



Floor Plan

These particulars, whilst believed to be accurate are set out as a general outline only for guidance and do not constitute any part of an offer or contract. Intending purchasers should not rely on them as statements of representation of fact, but must satisfy themselves by inspection or otherwise as to their accuracy. No person in this firm's employment has the authority to make or give any representation or warranty in respect of the property.

