



31 Woodpecker Way, Loughborough, LE12 9WF

This three bedroom property is available on the much favoured location of Regent Place, Shepshed development. The property internally comprises of entrance hallway, downstairs WC, kitchen/diner, lounge three bedrooms with bedroom one having an en suite and a family bathroom. Externally the property has parking and an enclosed rear garden. Viewing advised to appreciate the property on offer.

Price £230,000

31 Woodpecker Way

Shepshed, Loughborough, LE12 9WF



- POPULAR LOCATION
- EN SUITE TO BEDROOM ONE
- EPC RATING
- THREE BEDROOMS
- REAR ENCLOSED GARDEN
- VIEWING ADVISED
- COUNCIL TAX BAND B

FRONT ELEVATION

ENTRANCE HALL

DOWNSTAIRS WC

LOUNGE

KITCHEN DINER

STAIRS & LANDING

BEDROOM ONE

EN SUITE

BEDROOM TWO

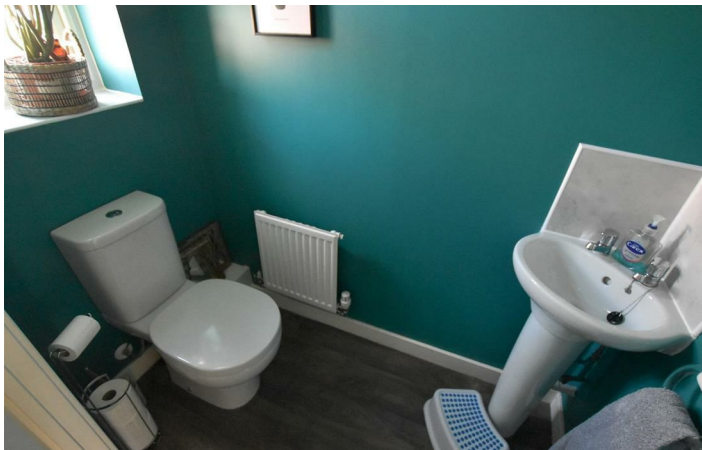
BEDROM THREE

FAMILY BATHROOM

REAR ENCLOSED GARDEN



[Directions](#)



Floor Plan

These particulars, whilst believed to be accurate are set out as a general outline only for guidance and do not constitute any part of an offer or contract. Intending purchasers should not rely on them as statements of representation of fact, but must satisfy themselves by inspection or otherwise as to their accuracy. No person in this firm's employment has the authority to make or give any representation or warranty in respect of the property.

