



56 Chilham Way, Derby, DE24 5BN

This three bedroom property is available on the much favoured location of Boulton Moor, Derbyshire development. The property internally comprises of entrance hallway, downstairs WC, kitchen/diner, lounge three bedrooms with bedroom one having an en suite and a family bathroom. Externally the property has parking and an enclosed rear garden. Viewing advised to appreciate the property on offer.

Price Guide £205,000

56 Chilham Way

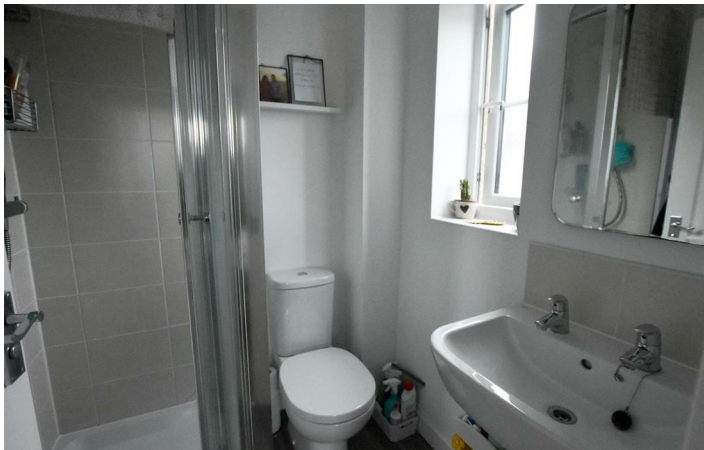
Boulton Moor, Derby, DE24 5BN



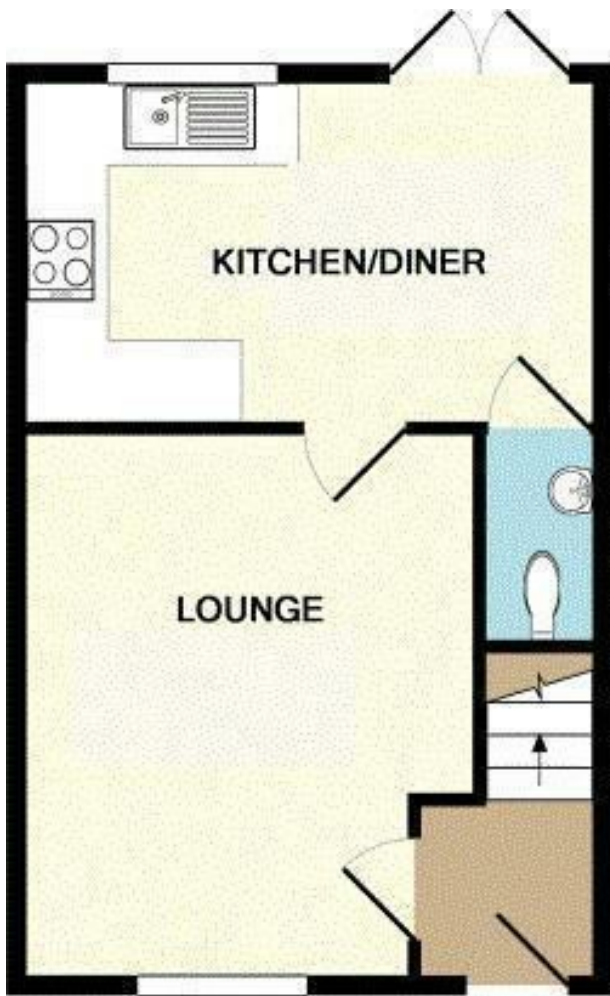
- POPULAR LOCATION
- VIEWING ADVISED
- GOOD ACCESS FOR DERBY CITY COUCIL
- THREE BEDROOMS
- TWO BATHROOMS
- EPC RATING B
- COUNCIL TAX BAND B
- CALL TODAY



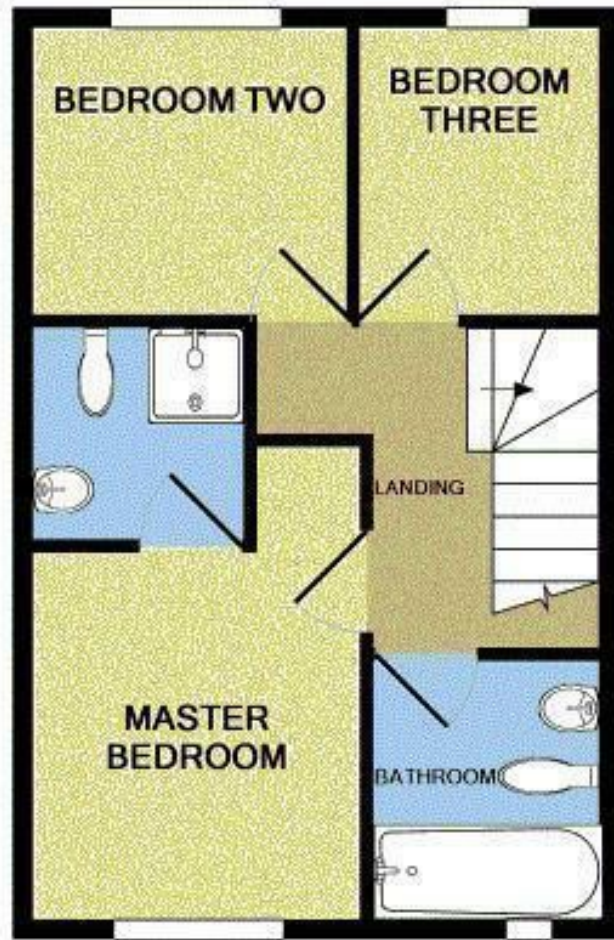
Directions



Floor Plan



GROUND FLOOR



1ST FLOOR

Whilst every attempt has been made to ensure the accuracy of the floor plan contained here, measurements of doors, windows, rooms and any other items are approximate and no responsibility is taken for any error, omission, or mis-statement. This plan is for illustrative purposes only and should be used as such by any prospective purchaser. The services, systems and appliances shown have not been tested and no guarantee as to their operability or efficiency can be given
 Made with Metropix ©2018

These particulars, whilst believed to be accurate are set out as a general outline only for guidance and do not constitute any part of an offer or contract. Intending purchasers should not rely on them as statements of representation of fact, but must satisfy themselves by inspection or otherwise as to their accuracy. No person in this firm's employment has the authority to make or give any representation or warranty in respect of the property.

