

13B Cambridge Street, Leicester, LE3 0JQ

A spacious 1 bedroom flat located off Narborough Road, LE3. The flat comprises a double bedroom, separate reception room, bathroom with shower and a fully fitted kitchen. The property also benefits from gas central heating and double glazing windows. The flat is situated closely towards all local amenities around the West End of Leicester, City Centre and DeMontfort University. Ideal for professionals, couples and students.

Available To Move In From 20th April 2025

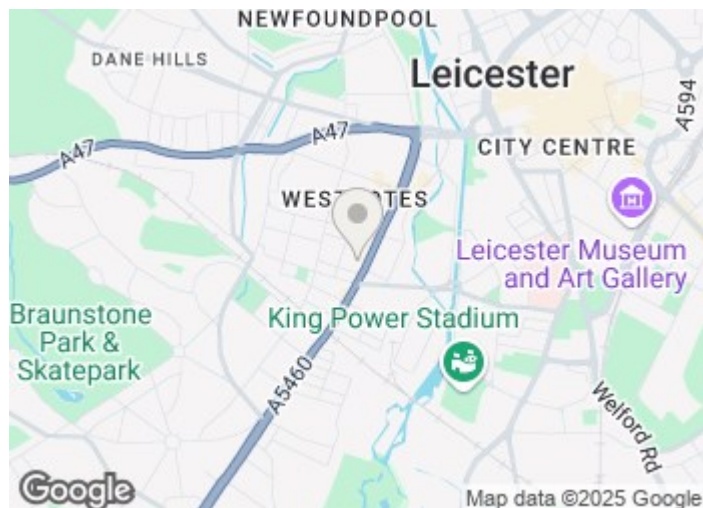
£725 PCM

13B Cambridge Street

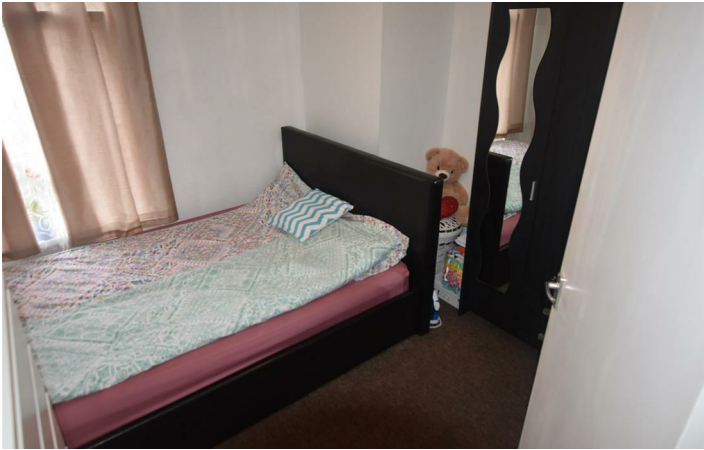
, Leicester, LE3 0JQ



- Spacious One Bedroom Flat
- Great Location
- Gas Central Heated
- Fitted Kitchen
- Available from 20th April 2025



Directions



Floor Plan

These particulars, whilst believed to be accurate are set out as a general outline only for guidance and do not constitute any part of an offer or contract. Intending purchasers should not rely on them as statements of representation of fact, but must satisfy themselves by inspection or otherwise as to their accuracy. No person in this firms employment has the authority to make or give any representation or warranty in respect of the property.

