

A38, Fleet Court Fleet Street, Leicester, LE1 3BA

BRAND NEW STUDIO APARTMENT:

We are delighted to offer this spacious one bedroom modern apartment in the heart of Leicester City centre. The apartment provides good access to all local amenities and public transport. Internally the property has been finished to a high standard and an internal inspection is highly recommended to appreciate the apartment on offer. Internally the property comprises of open plan kitchen/diner/lounge/bedroom area with built in wardrobes and a shower room. Offered unfurnished

£660 (From) Per Month

A38, Fleet Court Fleet Street

, Leicester, LE1 3BA

 0

 1

 0

 B

- BRAND NEW STUDIO APARTMENT
 - MODERN SHOWER ROOM
- VIEWING ADVISED
 - EPC RATING B
- MODERN FITTED KTICHEN AREA

FRONT ELEVATION

MODERN KITCHEN AREA

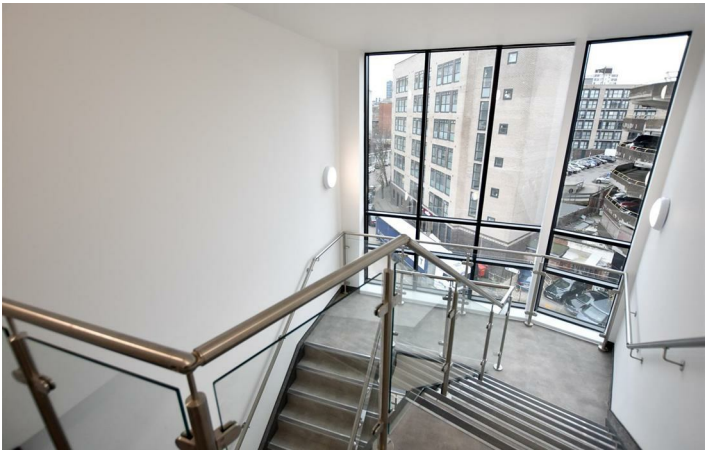
LOUNGE/BEDROOM AREA

SHOWER ROOM

COMMUNAL AREAS



Directions



Floor Plan

These particulars, whilst believed to be accurate are set out as a general outline only for guidance and do not constitute any part of an offer or contract. Intending purchasers should not rely on them as statements of representation of fact, but must satisfy themselves by inspection or otherwise as to their accuracy. No person in this firms employment has the authority to make or give any representation or warranty in respect of the property.

