



6-9 Charterhouse Square, London, EC1M 6ET

A lovely larger than normal studio flat in the art-deco styled Florin Court development. Main Studio room with a separate kitchen and fully tiled shower room with hallway storage.

Located in the heart of Smithfield with great restaurants, bars and transport links.

Situated on the ground floor with security access and daytime porter.

Florin Court has a communal gym, swimming pool and also access to a large roof terrace with excellent views.

Heating and hot water included in rent.

Great location, 2-minute walk to Barbican tube, 5 mins to Farringdon tube.

Basement swimming pool and leisure complex - FREE to tenants.

Fantastic roof terrace with views over London.

Offered unfurnished.

£1,600 PCM

6-9 Charterhouse Square

, London, EC1M 6ET



- Large Studio Flat
- Swimming Pool
- Great Transport Links
- Floor Security Access and Daytime Porter
- Roof Terrace
- Unfurnished
- Communal Gym
- Heating and Hot water included in rent
- Available Feb 2026

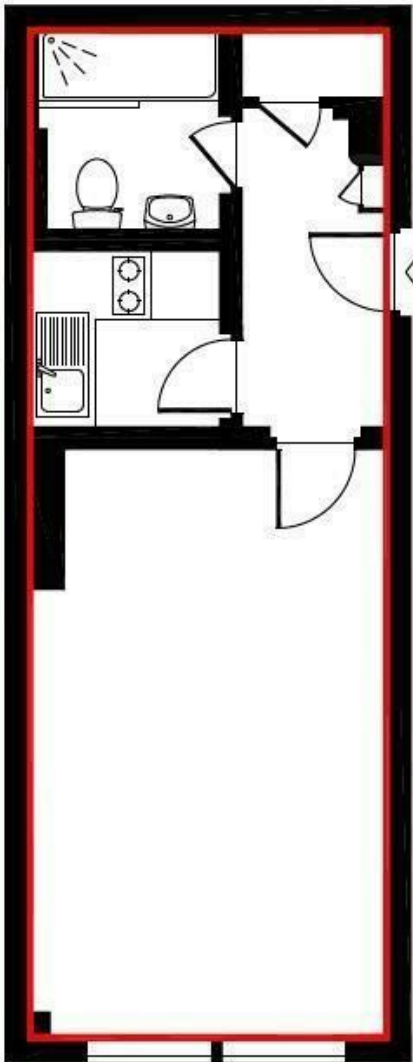


Directions



Floor Plan

Approx. gross internal area
309 Sq Ft. / 28.7 Sq M.



GROUND FLOOR

These particulars, whilst believed to be accurate are set out as a general outline only for guidance and do not constitute any part of an offer or contract. Intending purchasers should not rely on them as statements of representation of fact, but must satisfy themselves by inspection or otherwise as to their accuracy. No person in this firms employment has the authority to make or give any representation or warranty in respect of the property.

Energy Efficiency Rating			Environmental Impact (CO ₂) Rating		
	Current	Potential		Current	Potential
Very energy efficient - lower running costs					
(92 plus) A			(92 plus) A		
(81-91) B			(81-91) B		
(69-80) C			(69-80) C		
(55-68) D			(55-68) D		
(39-54) E			(39-54) E		
(21-38) F			(21-38) F		
(1-20) G			(1-20) G		
Not energy efficient - higher running costs					
England & Wales			England & Wales		
EU Directive 2002/91/EC			EU Directive 2002/91/EC		

62 76