



100 Greenwich South Street, London, SE10 8UN

A well situated 2 bed flat with the added bonus of a downstairs office. The flat comprises of 2 double bedroom, modern bathroom, living room, open plan kitchen dining area, downstairs workspace with ensuite and a sizeable private courtyard.

The flat is a short walk to Greenwich and Deptford Bridge station and has easy access into Canary Wharf and The City, it is also within walking distance of the bars, shops and restaurants in Greenwich.

Would ideally suit young professional or couple and can be offered as part furnished, beds not supplied.
Not suitable for sharers.

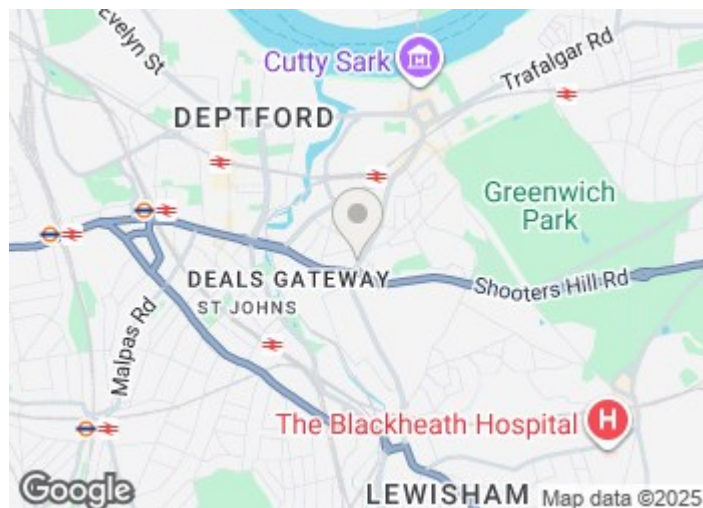
£1,995 Per Month

100 Greenwich South Street

, London, SE10 8UN



- Two Bedroom Flat
- Neutral Decor
- Available NOW
- Two Bathroom
- Excellent Condition
- Rear Garden
- Must Be Seen

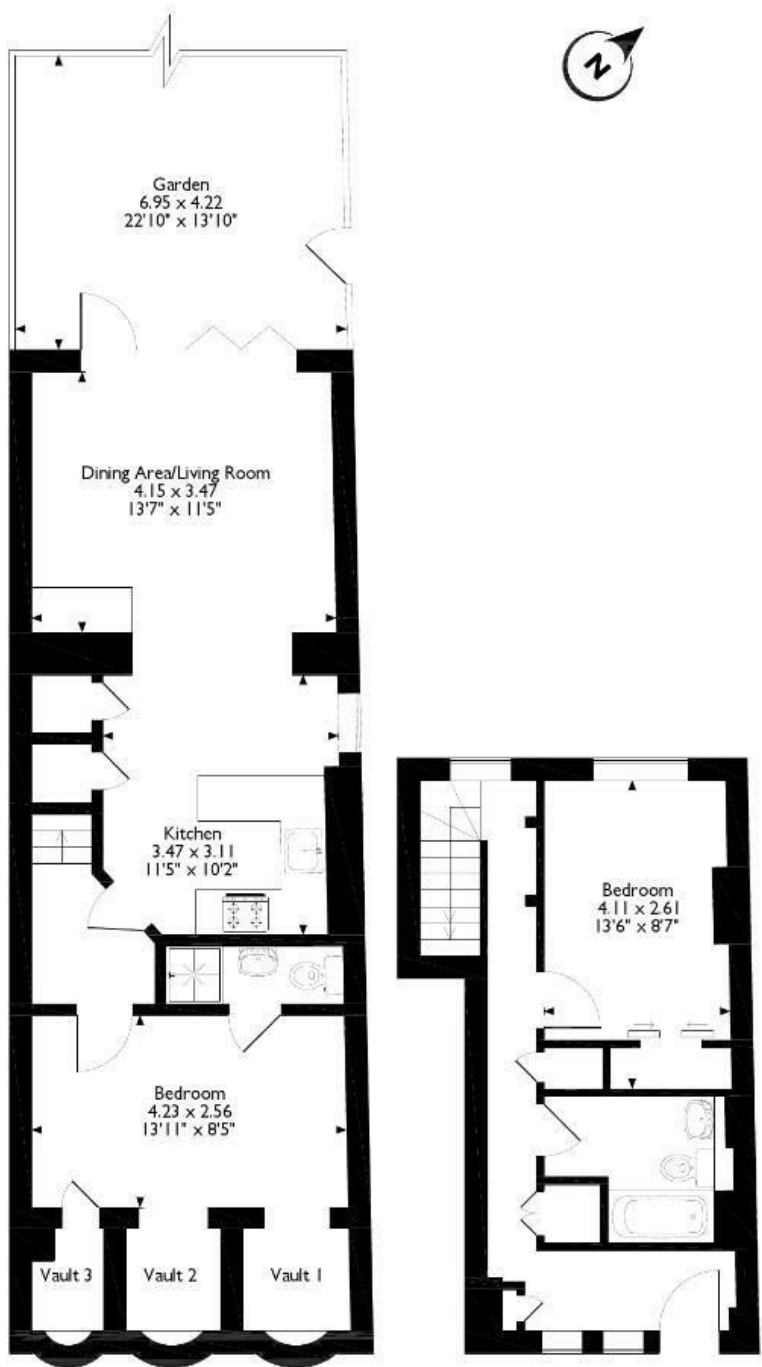


Directions



Floor Plan

Greenwich South Street, London
Approximate Gross Internal Area
848 SQ FT/79 SQ M



Lower Ground Floor

Upper Ground Floor

Please note that the location of doors, windows and other items are approximate and this floorplan is to be used for illustrative purposes only. Unauthorised reproduction is prohibited.

These particulars, whilst believed to be accurate are set out as a general outline only for guidance and do not constitute any part of an offer or contract. Intending purchasers should not rely on them as statements of representation of fact, but must satisfy themselves by inspection or otherwise as to their accuracy. No person in this firms employment has the authority to make or give any representation or warranty in respect of the property.

