



34 King John Street, Fleet, GU51 1HX

A three bedroom property, recently decorated throughout to a very high standard, ideally situated on the popular Elvetham Heath development, very close to the footbridge enabling easy walking access to Fleet Town Center and Train Station.

Accommodation comprises of living room, kitchen/diner and cloakroom to the ground floor. The kitchen has a built in double oven and hob + new fridge freezer, dishwasher and washing machine.

The first floor has three bedrooms and a family bathroom. The master bedroom benefits from an en-suite shower room and built-in wardrobes.

Externally the rear garden is private and has a sunny aspect. To the rear of the garden is off road parking and a garage for vehicles.

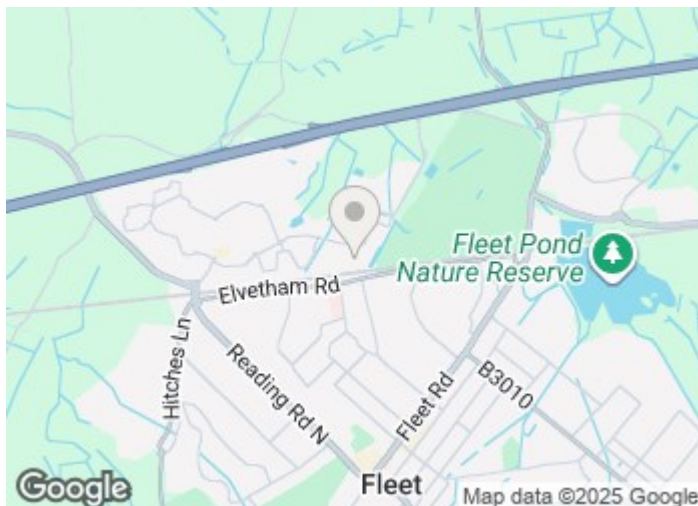
£1,895 PCM

34 King John Street

, Fleet, GU51 1HX



- Three Bedroom Property
- Wood Floors
- Available from 5th October 2025
- Great Location
- Neutral Decor
- Fitted Kitchen
- Must be seen

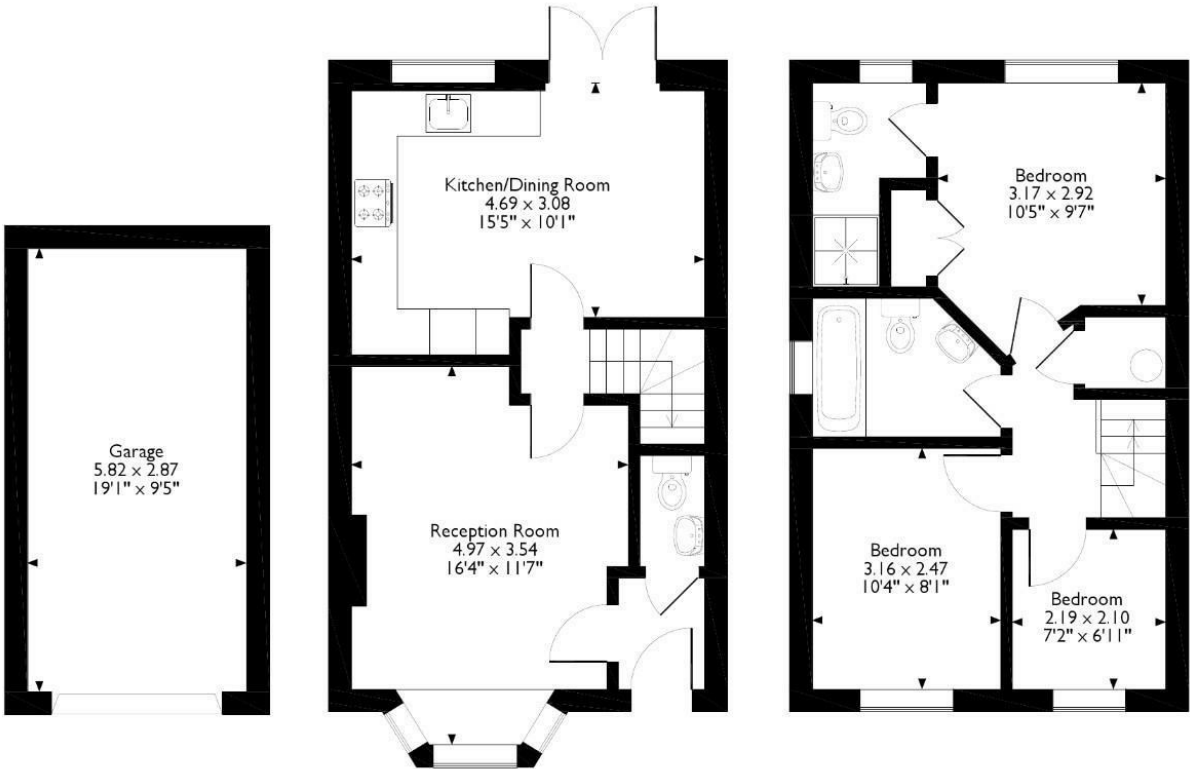


Directions



Floor Plan

King John Street, Fleet, Hampshire
Approximate Gross Internal Area
Main House = 807 SQ FT/75 SQ M
Garage = 180 SQ FT/17 SQ M



Ground Floor

First Floor

Please note that the location of doors, windows and other items are approximate and this floorplan is to be used for illustrative purposes only. Unauthorized reproduction is prohibited.

These particulars, whilst believed to be accurate are set out as a general outline only for guidance and do not constitute any part of an offer or contract. Intending purchasers should not rely on them as statements of representation of fact, but must satisfy themselves by inspection or otherwise as to their accuracy. No person in this firms employment has the authority to make or give any representation or warranty in respect of the property.

