

126 Anerley Road, London, SE20 8DL

An opportunity to rent a lovely bright 2 bedroom flat in Crystal Palace on Anerley Road which is between 2 main stations Crystal Palace and Anerley, just 5 mins walk from vibrant Crystal Palace Triangle.

The property is on the second floor of the building and comprises a main living room/dining room with a small kitchen and bathroom, master big double bedroom and small double bedroom (was used as an office). The property has been newly decorated, new sofa covers just purchased and comes part furnished - a mattress will be included for the double bed. The heating is connected to Nest and can easily be set and monitored to keep on top of bills. Access for visitors is via entry phone and buzzer so no need to run up and down stairs.

There is also an existing Virgin Media contract with super fast broadband and wifi, so no need to go through the hassle of getting connected. Virgin Media Internet package at the additional cost of £50 per month.

The transport links are excellent with the overground from Crystal Palace/Anerley going into Canada Water/Shoreditch/Highbury and Islington. There are also trains to London Bridge and Victoria approx every half hour from Crystal Palace. There are buses to Brixton that pass by 2 mins from the flat, and a night bus N3 that also passes by for late night excursions

£1,650 PCM

126 Anerley Road

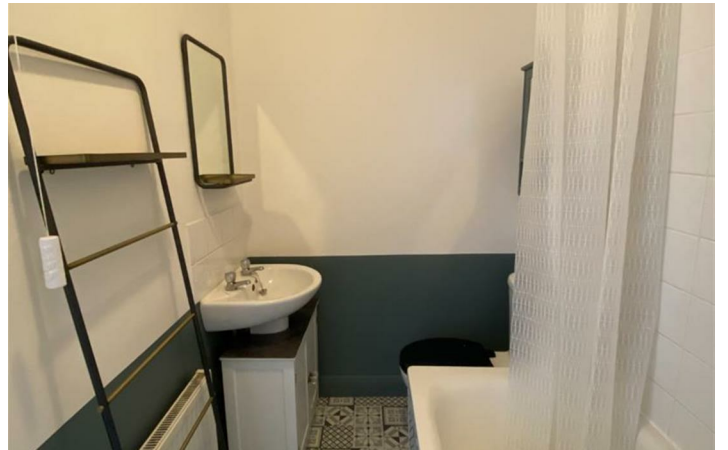
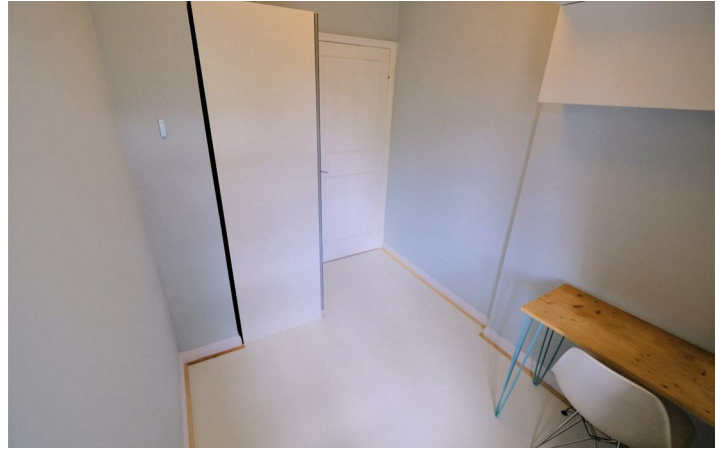
, London, SE20 8DL



- Great Transport Connections
- Newly Decorated
- Gas Central heating with NEST Thermostat
- Modern Interior
- Part Furnished
- Bright and Airy Apartment
- Available from 27th September 2024.



[Directions](#)



Floor Plan

These particulars, whilst believed to be accurate are set out as a general outline only for guidance and do not constitute any part of an offer or contract. Intending purchasers should not rely on them as statements of representation of fact, but must satisfy themselves by inspection or otherwise as to their accuracy. No person in this firm's employment has the authority to make or give any representation or warranty in respect of the property.

