

## Ellington Tower, 10 Park Drive, London, E14 9ZW

RentMyHome are proud to present to the market this luxury studio apartment located in the modern waterside development in Canary Wharf.

The apartment briefly comprises a bright and spacious, open-plan living area with floor-to-ceiling windows leading to a Juliet balcony providing views over the O2 Arena and The Thames.

The fully equipped, stylish kitchen has a high-end range of built-in appliances. The double bed sleeping area provides ample space for a double bed, bedside cabinets and floor-to-ceiling wardrobes.

Leading from the bedroom area, the luxury fully tiled shower room offers W/C, wash hand basin with vanity unit and a walk-in shower.

The property is very well presented and offers fantastic onsite facilities including private residents' lounge and terrace, swimming pool, a state-of-the-art gym\*, 24hr concierge and security. (\*Gym membership at additional cost).

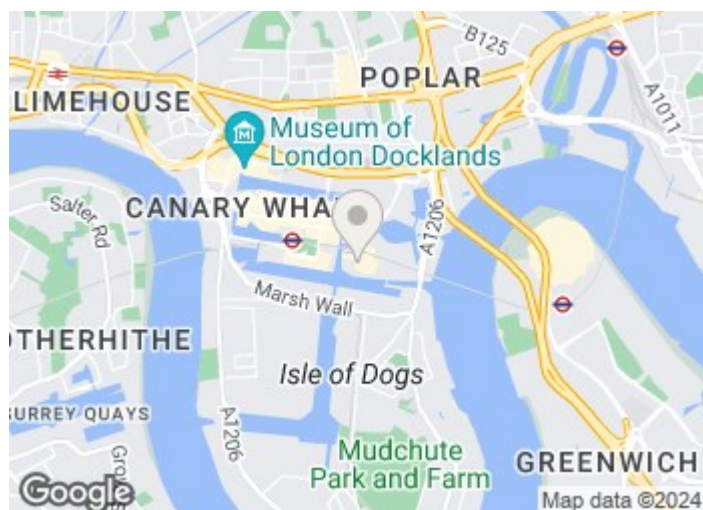
**£2,300 PCM**

# Ellington Tower, 10 Park Drive

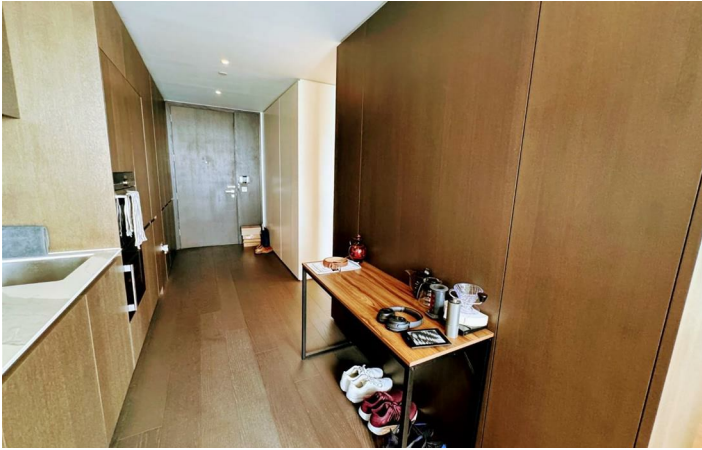
, London, E14 9ZW



- STUDIO APARTMENT
- EXCELLENT LOCAL AMENITIES
- AVAILABLE TO LET FROM 5th AUGUST 2024
- 24 HOUR CONCIERGE SERVICE
- CLOSE TRANSPORT LINKS FROM CANARY WHARF TUBE & DLR
- RESIDENTS CINEMA, SWIMMING POOL, TERRACE & CLUB ROOM
- MUST BE SEEN



[Directions](#)



# Floor Plan

These particulars, whilst believed to be accurate are set out as a general outline only for guidance and do not constitute any part of an offer or contract. Intending purchasers should not rely on them as statements of representation of fact, but must satisfy themselves by inspection or otherwise as to their accuracy. No person in this firm's employment has the authority to make or give any representation or warranty in respect of the property.

