

43C Malvern Road, London, NW6 5PU

A fantastic two double bedroom second (top) floor apartment in an end-of-terrace period conversion. This bright split level flat has a large, light and airy reception with a gorgeous exposed brick wall, a spacious modern eat-in kitchen, two good size double bedrooms and a bathroom with separate WC. Further benefits from wood flooring throughout, double-glazed sash windows, gas central heating and plenty of light throughout the day.

The property is located within 10-minute walking distance of Maida Vale, Queens Park and Westbourne Park and is ideally located with excellent public transport connections into the City and West End:

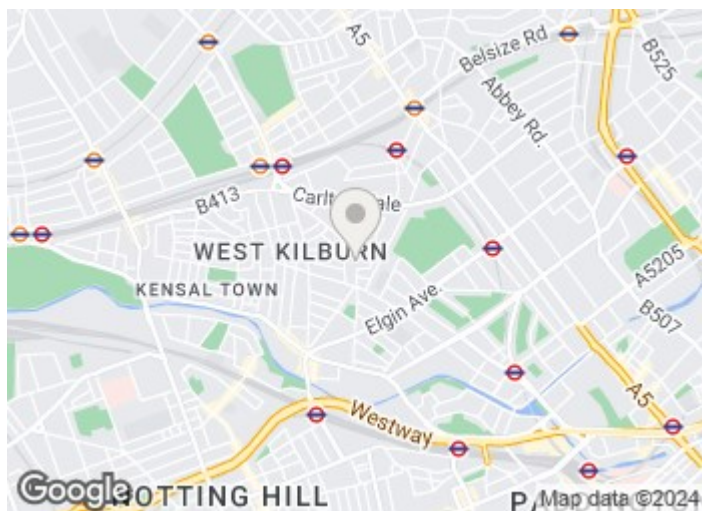
Tube lines: Bakerloo, Hammersmith & City and Circle Line
Overground line: Watford Junction to Euston

Bus routes: 6, 31, 36, 187, 228, 316, 328 and 414

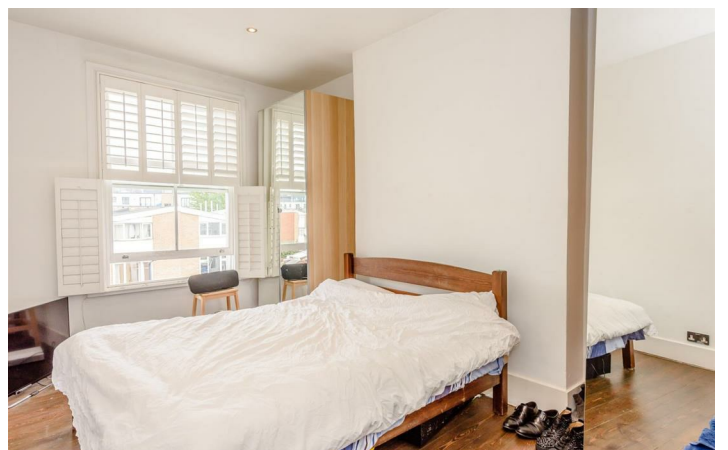
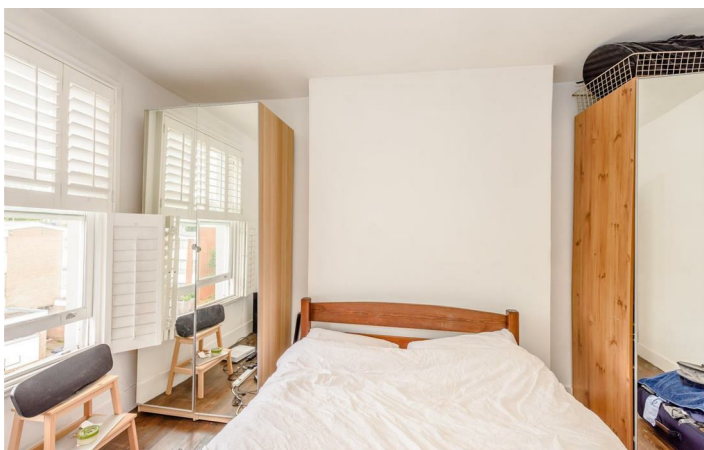
£2,250 PCM

43C Malvern Road

, London, NW6 5PU



[Directions](#)



Floor Plan

Malvern Road, London
 Approximate Gross Internal Area
 700 SQ FT/65 SQ M



Please note that the location of doors, windows and other items are approximate and this floorplan is to be used for illustrative purposes only. Unauthorized reproduction is prohibited.

These particulars, whilst believed to be accurate are set out as a general outline only for guidance and do not constitute any part of an offer or contract. Intending purchasers should not rely on them as statements of representation of fact, but must satisfy themselves by inspection or otherwise as to their accuracy. No person in this firm's employment has the authority to make or give any representation or warranty in respect of the property.

Energy Efficiency Rating		Environmental Impact (CO ₂) Rating	
	Current	Potential	
<p>Very energy efficient - lower running costs</p> <p>(92 plus) A</p> <p>(81-91) B</p> <p>(69-80) C</p> <p>(55-68) D</p> <p>(39-54) E</p> <p>(21-38) F</p> <p>(1-20) G</p> <p>Not energy efficient - higher running costs</p>		80	<p>Very environmentally friendly - lower CO₂ emissions</p> <p>(92 plus) A</p> <p>(81-91) B</p> <p>(69-80) C</p> <p>(55-68) D</p> <p>(39-54) E</p> <p>(21-38) F</p> <p>(1-20) G</p> <p>Not environmentally friendly - higher CO₂ emissions</p>
England & Wales	EU Directive 2002/91/EC		England & Wales