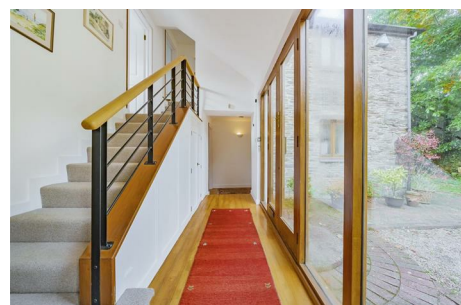


# CHRISTOPHER'S SOUTH HAMS

, Totnes, TQ9

Guide price £850,000



- Detached Converted Mill (not listed)
- Ground Floor Accommodation
- Attached Workshop
- 5 Bedrooms
- Riverside & Village Location
- Gardens & Views
- 2 Bathrooms
- Detached Garage with Electric Doors (Light & Power)
- No Onward Chain

Contact us for more details:

Tel: 01752 746550 Email: [office@christophers-southhams.com](mailto:office@christophers-southhams.com)

Full listings online at <https://www.christophers-southhams.com>