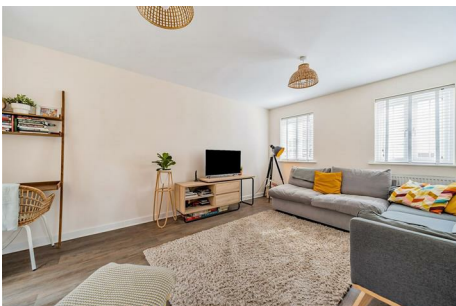


CHRISTOPHER'S SOUTH HAMS

Hawthorn Way, Ivybridge, PL21

Guide price £339,950



- Remainder of NHBC warranty
- Downstairs Cloakroom
- Landscaped Garden with Multi-Functional Garden Studio
- No Onward Chain
- Low Maintenance
- 4 Bedrooms
- Parking
- Immaculately Presented
- Ensuite & Family Bathroom
- Photovoltaic Panels

Contact us for more details:

Tel: 01752 746550 Email: office@christophers-southhams.com

Full listings online at <https://www.christophers-southhams.com>