



Latimer Close, Plympton, PL7 1PJ

CHRISTOPHER'S
SOUTH HAMS



Latimer Close, Plympton, PL7 1PJ

Christopher's South Hams are pleased to market this super mid-terrace 2-bedroom home ideal for the First Time Buyer or investor. Having been newly decorated in neutral tones and with new carpet throughout, there is still scope to put your own stamp on the property and call it home.

Downstairs there is a modern galley kitchen with a range of fitted units. The spacious sitting room/dining room is light and bright with a door leading to the rear garden decking.

Upstairs there is a family bathroom and 2 bedrooms, one of which hosts a range of built-in wardrobes.

Outside there is allocated parking for 1 vehicle at the front. To the rear is a private and low maintenance garden enclosed by fencing and currently offering a decking area and gravelled garden.

This great opportunity is offered with no onward chain.



Key Features

Newly Decorated & Carpeted
Modern Kitchen
2 Bedrooms
Low Maintenance Garden
Parking
No Onward Chain

Situation & Amenities

Richly steeped in history, the old stannary town of Plympton is sited on an ancient trackway called 'the Ridgeway' from Dartmoor with its earliest surviving documentary reference coming from an Anglo-Saxon charter reading 'Plymentun' deriving from the adjective plymen meaning 'growing with plum-trees', or 'Plum-tree farm'. Alternative derivations suggest a possible relationship to the Latin plumbum which means 'tin' and may be a nod to the town's history as an important trading centre for locally mined tin.

Today, Plympton sits in the shadow of the now ruined Norman motte-and-bailey castle that still dominates the landscape. The town in general retains its medieval street pattern and together with a number of historic buildings, variety of architecture as well as the nearby Iron Age hill fort of Boringdon Camp, there are details all around to attest to the town's varying past. Plympton now offers a bustling hub with a wealth of amenities including retail, primary and secondary schools, healthcare services, leisure facilities, sports clubs, pubs and cafes and places of worship which altogether manages to preserve a village feel for this ever-developing town. Excellent transport links give access to the larger surrounding towns and vibrant waterfront city of Plymouth.

Services

All Mains Services Connected.

Tenure

Freehold.

Local Authority

South Hams District Council,
Follaton House, Totnes, TQ9 5NE

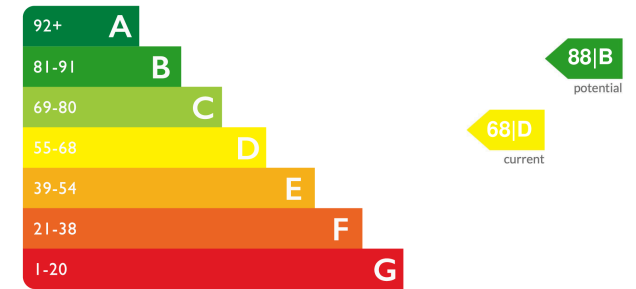
Viewings

Strictly by appointment through
Christopher's South Hams
01752 746 550

COUNCIL TAX BAND: B



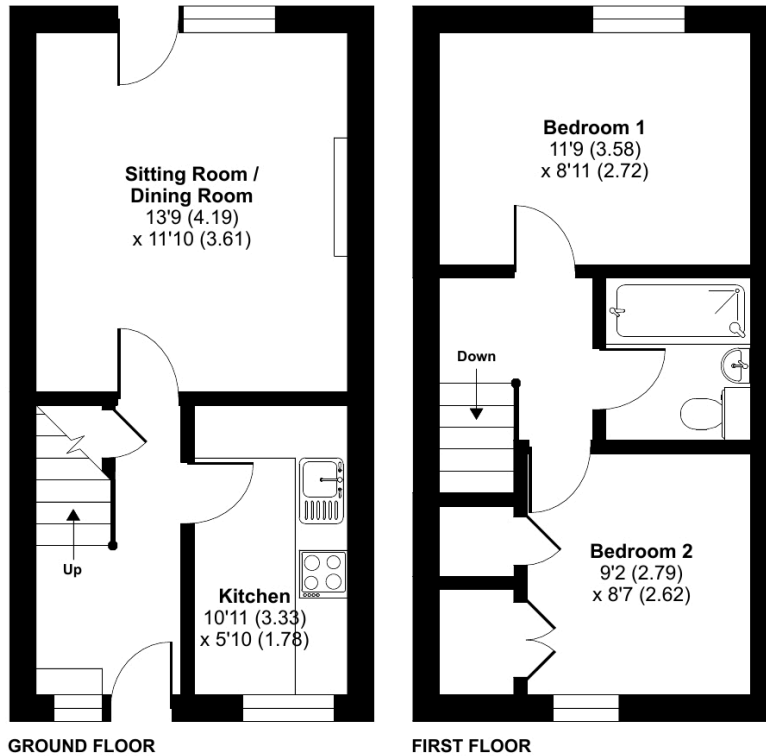
Energy Efficiency Rating



Latimer Close, Plympton, PL7

Approximate Area = 594 sq ft / 55.2 sq m

For identification only - Not to scale



See more great properties or arrange your viewing by visiting us online at www.christophers-southhams.com

RICS Certified Property Measurer
 Floor plan produced in accordance with RICS Property Measurement Standards incorporating International Property Measurement Standards (IPMS2 Residential). © nitchecom 2024. Produced for Christopher's South Hams Ltd. REF: 1082615

CHRISTOPHER'S
 SOUTH HAMS

These particulars do not constitute any part of an offer or contract. None of the statements contained in these particulars are to be relied on as statements or representations of fact and intending purchasers must satisfy themselves by inspection or otherwise to the correctness of each of the statements contained in these particulars. The vendor does not make or give, and neither Christopher's South Hams, nor any person in its employment has any authority to make or give, any representation or warranty whatever in relation to this property. Christopher's South Hams has not tested any equipment, apparatus, fittings or services and cannot verify that these are in working order.

6 PYNEWOOD HOUSE, 1A EXETER ROAD, IVYBRIDGE DEVON PL21 0FN
 +44 (0)1752 746 550 | OFFICE@CHRISTOPHERS-SOUTHAMS.COM