



21 Landseer Court, Corby, NN18 0RU



**STUART
CHARLES**
ESTATE AGENTS

£190,000

Stuart Charles are delighted to offer FOR SALE this three bedroom family home located in the B Town centre area of Corby. Situated a short walk from a range of amenities to include several schools and shops an early viewing is recommended to avoid missing out on this home. The accommodation comprises to the ground floor of an entrance hall, guest W.C, living room and kitchen/diner. To the first floor are three DOUBLE bedrooms and a three piece family bathroom. Outside to the front is laid lawn with paths to the front door. To the rear is a patio that leads to laid lawn, all enclosed by timber fence surround. Call now to view!!.

- NO CHAIN
- THREE DOUBLE BEDROOMS
- CLOSE TO THE TOWN CENTRE
- READY TO MOVE INTO
- DOWNSTAIRS GUEST WC
- COUNCIL TAX BAND A
- WALKING DISTANCE TO SCHOOLS

Entrance Hall

Radiator, stairs to first floor landing with understairs cupboard, laminate flooring, doors to.

Lounge

12'4 x 10'4 (3.76m x 3.15m)

Window to front aspect, radiator.

Kitchen/Diner

21'6 x 13'4 (6.55m x 4.06m)

Comprising single drainer stainless

steel sink unit with cupboards under, range of base and eye level units providing work surfaces, gas hob with free standing cooker, plumbing for washing machine, space for fridge freezer, window to front elevation, double glazed French doors to the rear elevation.

Guest WC

Comprising low flush W.C., obscure glazed window to front aspect.







Landing

Access to loft space, door to.

Bedroom One

12'8 x 10'6 (3.86m x 3.20m)

Window to rear aspect, radiator.

Bedroom Two

13' x 8'8 (3.96m x 2.64m)

Window to front aspect, radiator.

Bedroom Three

11'8 x 10' (3.56m x 3.05m)

Window to rear aspect, radiator, built in cupboard.





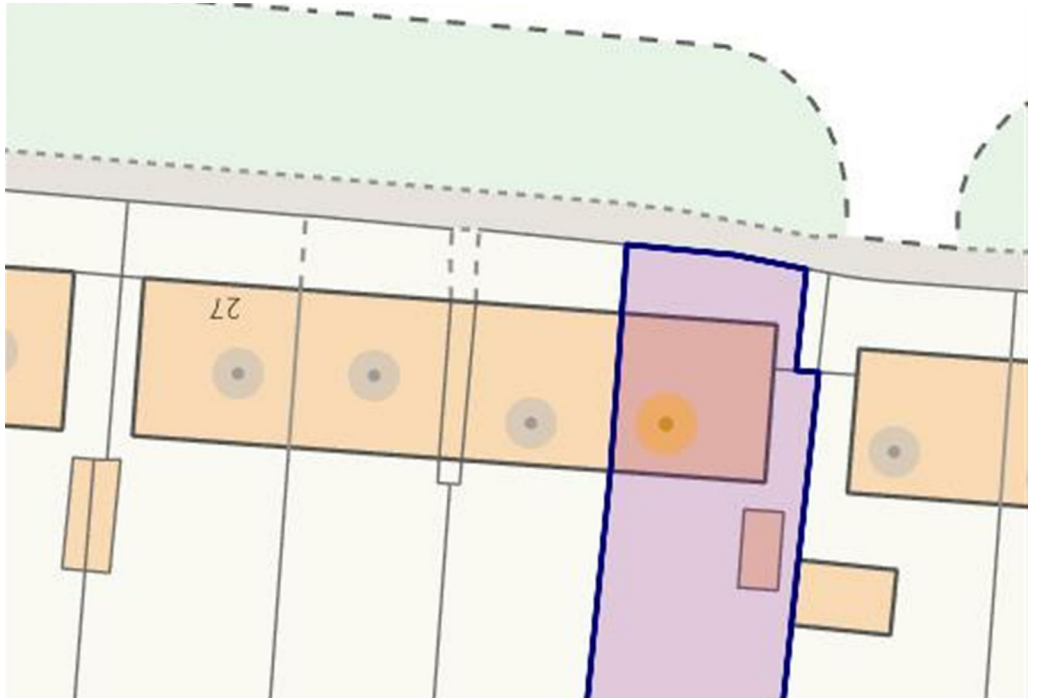
Bathroom

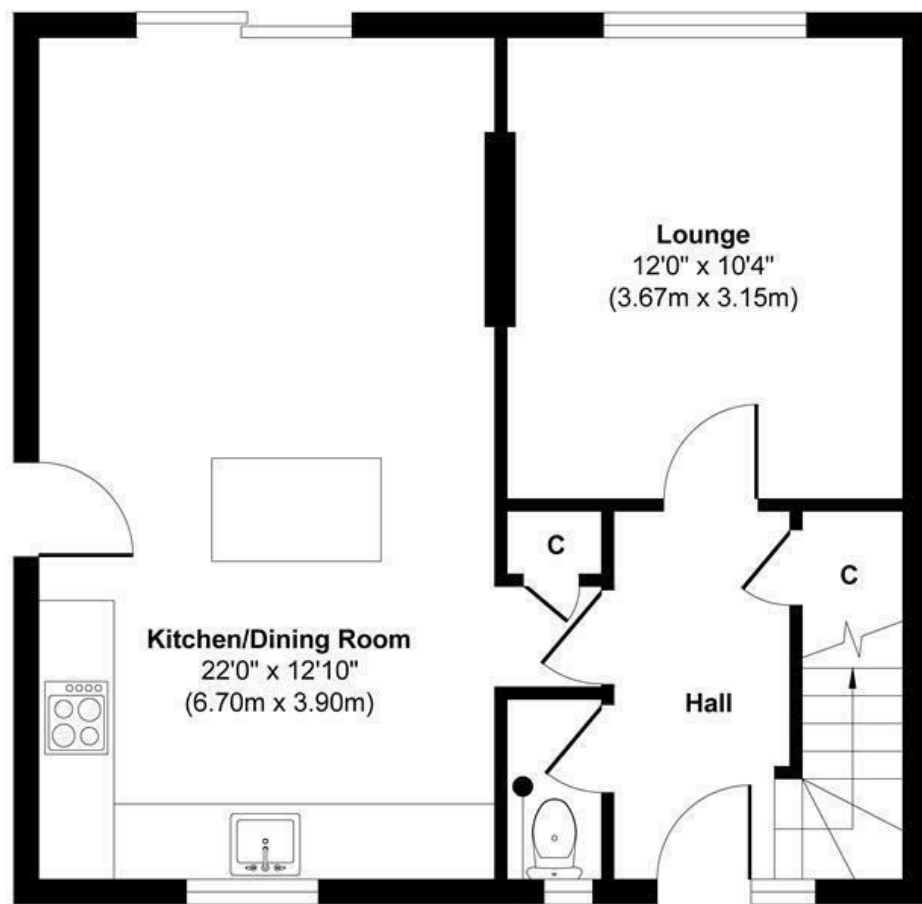
8'1 x 4'10 (2.46m x 1.47m)

Comprising panelled bath, low flush W.C., wash basin, obscure glazed window to front aspect, radiator.

Outside

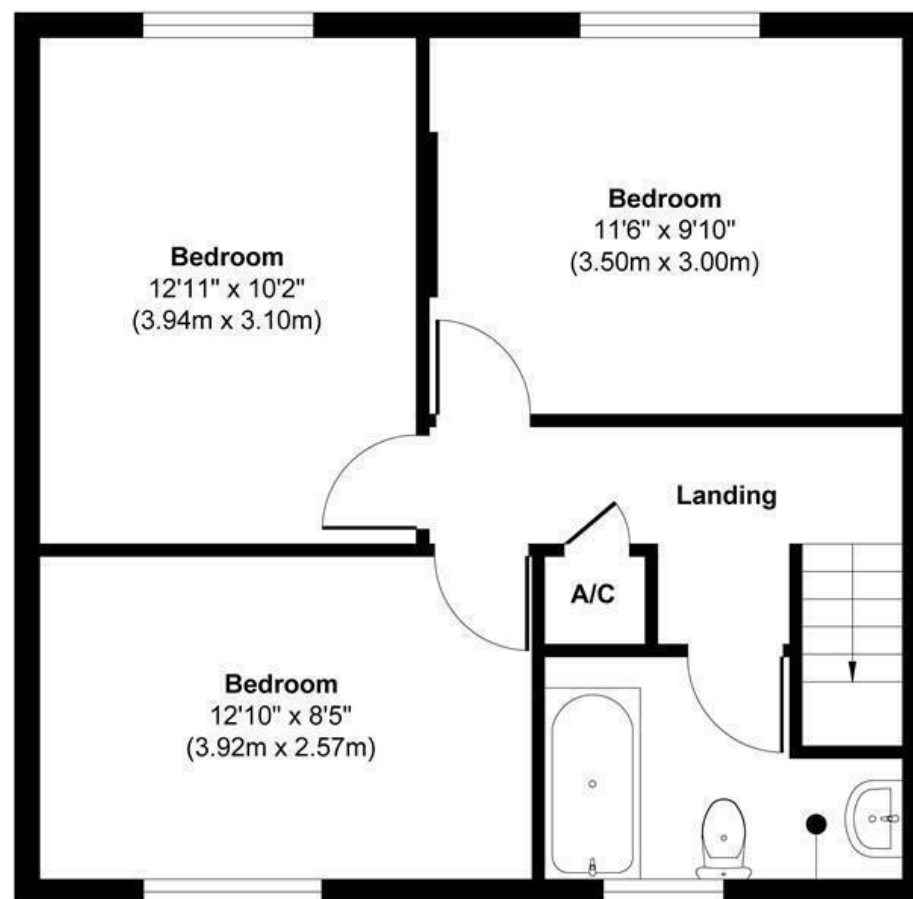






Ground Floor
 Approximate Floor Area
 496 sq. ft
 (46.09 sq. m)

WC
 4'11" x 2'6"
 (1.50m x 0.75m)



First Floor
 Approximate Floor Area
 496 sq. ft
 (46.09 sq. m)

Bathroom
 6'3" x 5'6"
 (1.90m x 1.67m)



Approx. Gross Internal Floor Area 992 sq. ft / 92.18 sq. m

