

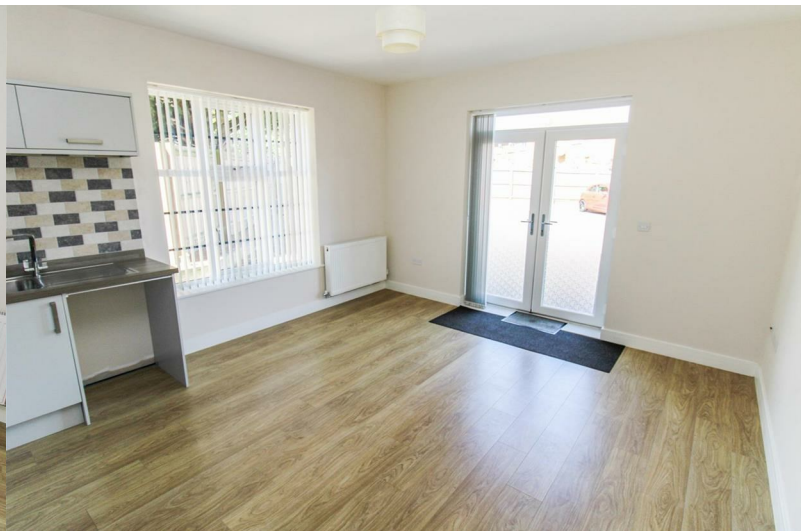


**STUART
CHARLES**
ESTATE AGENTS



The Hearth, Studfall Avenue , Corby, NN17 1LE

£850 Per month



The Hearth, Studfall Avenue

, Corby, NN17 1LE

£850 Per month



Entered via double glazed French doors

Lounge/Kitchen

16'0 x 14'3 (4.88m x 4.34m)

Kitchen : Comprising a range of base and eye level units with a single sink and drainer, eclectic oven and hob with recycler hood, space for automatic washing machine, integrated fridge/freezer, integrated dishwasher.

Lounge: Double glazed French doors to rear, radiator, multi media tv point, double glazed window to side elevation, door to:

Hallway

Doors to:

Bedroom One

11'4 x 9'10 (3.45m x 3.00m)

Featuring a range of fitted furniture, double glazed window to rear, radiator, tv point.

En-Suite : Featuring a three piece white suite with a walk in double shower, a low level wash hand basin, low level pedestal, extractor fan, radiator.

Bedroom Two

11'0 x 10'0 (3.35m x 3.05m)

Double glazed window to side elevation, radiator.

Bathroom/Utility

Originally fitted as a three piece bathroom now it is currently a utility room.

Comprising a low level pedestal, low level wash hand basin, space for automatic washing machine, radiator, extractor.

Outside

A private development with electric gated access and an allocated parking space.

COUNCIL TAX BAND A



Road Map



Hybrid Map



Terrain Map



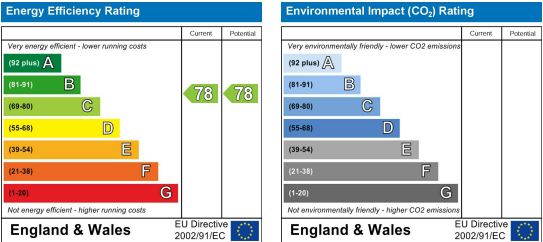
Floor Plan



Viewing

Please contact our Stuart Charles Estate Agents Office on 01536 234264 if you wish to arrange a viewing appointment for this property or require further information.

Energy Efficiency Graph



These particulars, whilst believed to be accurate are set out as a general outline only for guidance and do not constitute any part of an offer or contract. Intending purchasers should not rely on them as statements of representation of fact, but must satisfy themselves by inspection or otherwise as to their accuracy. No person in this firms employment has the authority to make or give any representation or warranty in respect of the property.