



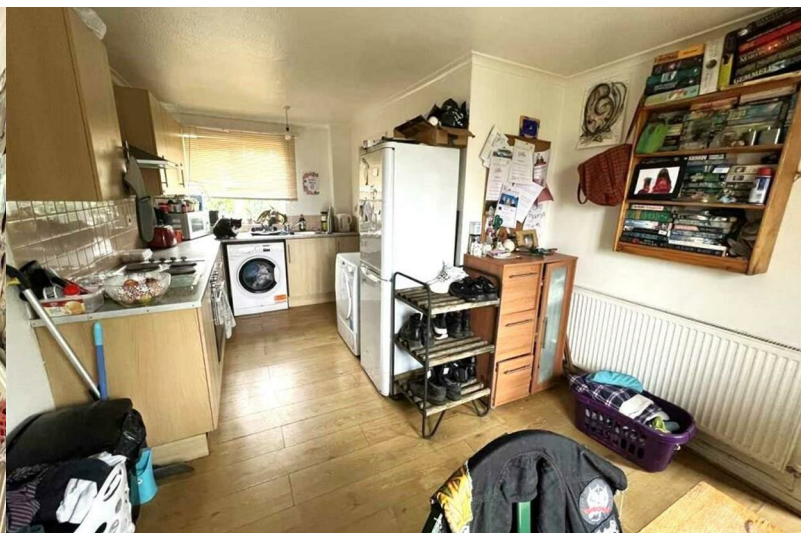
**STUART  
CHARLES**  
ESTATE AGENTS



## Bute Close

, Corby, NN17 2PL

£160,000



# Bute Close

, Corby, NN17 2PL

£160,000



## Entrance Hall

Entered via a double glazed door, radiator, storage cupboard, doors to:

## Living Room

17'4 x 10'0 (5.28m x 3.05m)

Double glazed window to front and rear elevation, radiator, tv point, telephone point.

## Kitchen/Diner

17'4 x 10'4 (5.28m x 3.15m)

Fitted to comprise a range of base and eye level units with a single steel sink and drainer, electric hob, electric oven, space for automatic washing machine, space for free standing fridge/freezer, double glazed window to front and rear elevation, radiator, door to:

## Rear Hall

Double glazed window to rear elevation, stairs rising to first floor landing.

## First Floor Landing

Loft access, airing cupboard, radiator, doors to:

## Bedroom One

15'0 x 10'6 (4.57m x 3.20m)

Double glazed window to front elevation, radiator, two built in wardrobes.

## Bedroom Two

11'8 x 10'2 (3.56m x 3.10m)

Double glazed window to front elevation, radiator, built in wardrobe.

## Bathroom

5'8 x 5'0 (1.73m x 1.52m)

Fitted to comprise a two piece suite consisting of a panel bath with mixer shower tap, low level wash hand basin, radiator, double glazed window to rear elevation.

## W.C

Fitted with a low level pedestal and double glazed window to rear elevation.

## Outside

Front: Consisting of a a low maintenance lawn.

Rear: A patio area leads onto a laid lawn and is enclosed by timber fencing to all side and gated access to the rear.



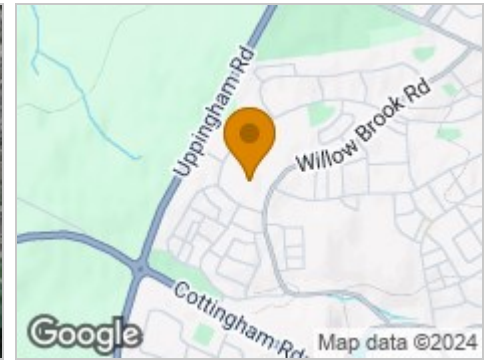
### Road Map



### Hybrid Map



### Terrain Map



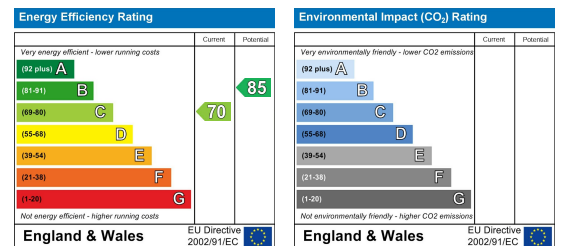
### Floor Plan



### Viewing

Please contact our Stuart Charles Estate Agents Office on 01536 234264 if you wish to arrange a viewing appointment for this property or require further information.

### Energy Efficiency Graph



These particulars, whilst believed to be accurate are set out as a general outline only for guidance and do not constitute any part of an offer or contract. Intending purchasers should not rely on them as statements of representation of fact, but must satisfy themselves by inspection or otherwise as to their accuracy. No person in this firm's employment has the authority to make or give any representation or warranty in respect of the property.