



4 Orkney Walk, Corby, NN17 2QT



£169,950

Stuart Charles are delighted to offer FOR SALE with NO CHAIN this TWO DOUBLE bedroom semi detached home located in the Lodge park area of Corby. Situated a short walk away from several schools and shopping area's this home is ideal for first time buyers or investor's. The accommodation comprises to the ground floor of an entrance hall, lounge with French doors to the rear and an open plan kitchen/diner. To the first floor are two double bedrooms, a two piece shower room and a separate W.C. Outside to the front is a laid lawn while to the rear a L shaped patio area leads to a laid lawn and brick built storage shed while all being enclosed by timber fencing to all sides. Call now to view!!.

- NO CHAIN
- OPEN PLAN KITCHEN/DINER
- SHOWER ROOM WITH SEPERATE W.C
- WALKING DISTANCE TO PRIMARY AND SECONDARY SCHOOLS
- WALKING DISTANCE TO LODGE PARK SPORTS CENTRE
- LARGE LOUNGE WITH FRENCH DOORS TO GARDEN
- TWO DOUBLE BEDROOMS
- SOUTH FACING REAR GARDEN
- WALKING DISTANCE TO PYTCHLEY COURT SHOPS
- CLOSE TO MAIN BUS LINKS

Entrance Hall

Entered via a double glazed door, radiator, storage cupboard, doors to:

Lounge

16'86 x 9'95 (4.88m x 2.74m)

Double glazed window to front elevation, two radiators, tv point, telephone point, double glazed French doors to rear elevation.

Kitchen/Diner

16'86 x 6'86 (4.88m x 1.83m)

Fitted to comprise a range of base and eye level units with a single sink and drainer, electric hob, electric oven, space for automatic washing machine, space for free standing fridge/freezer, radiator, double glazed window to front and rear elevations, door to:

Rear Hall

Double glazed door to garden, stairs rising to first floor landing.







First Floor Landing

Loft access, Airing cupboard with Combi boiler, doors to:

Bedroom One

14'17 x 10'10 (4.27m x 3.30m)

Double glazed window to rear elevation, radiator, two built in double wardrobes.

Bedroom Two

11'08 x 9'9 (3.56m x 2.97m)

Double glazed window to rear elevation, radiator, built in double wardrobe.





Shower Room

5'17 x 4'57 (1.52m x 1.22m)

Fitted to comprise a two piece suite with a double shower cubicle with electric shower, low level pedestal, radiator, double glazed window to front elevation.

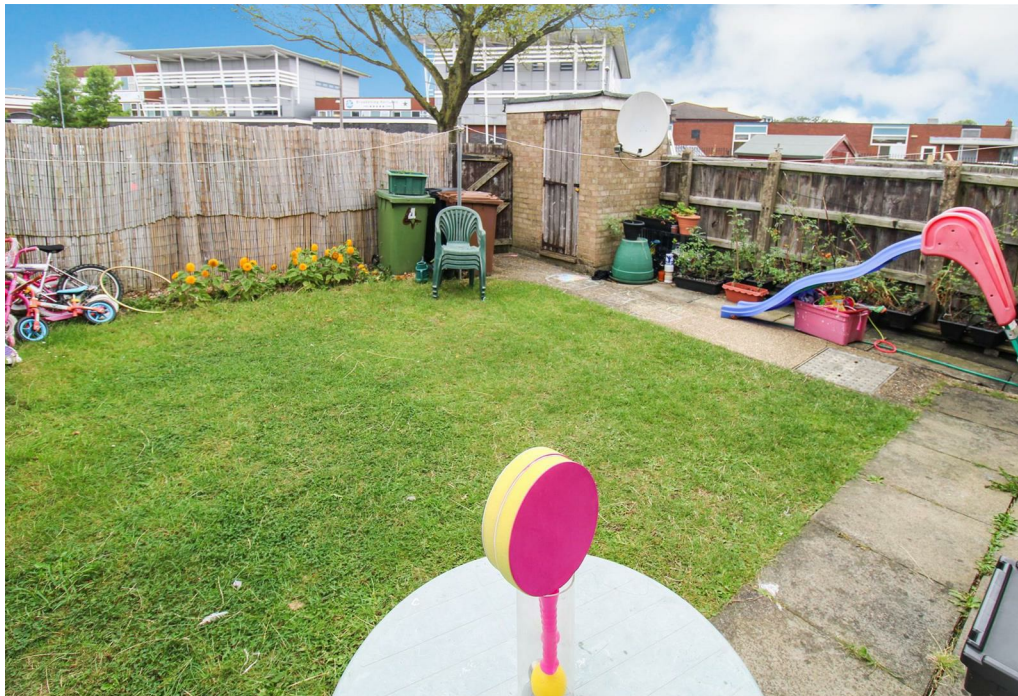
W.C

Fitted with a low level pedestal and double glazed window to front elevation.

Outside

Front: Features a laid lawn.

Rear: A L shaped patio area leads to a laid lawn and features a brick built shed and timber fences to all sides.



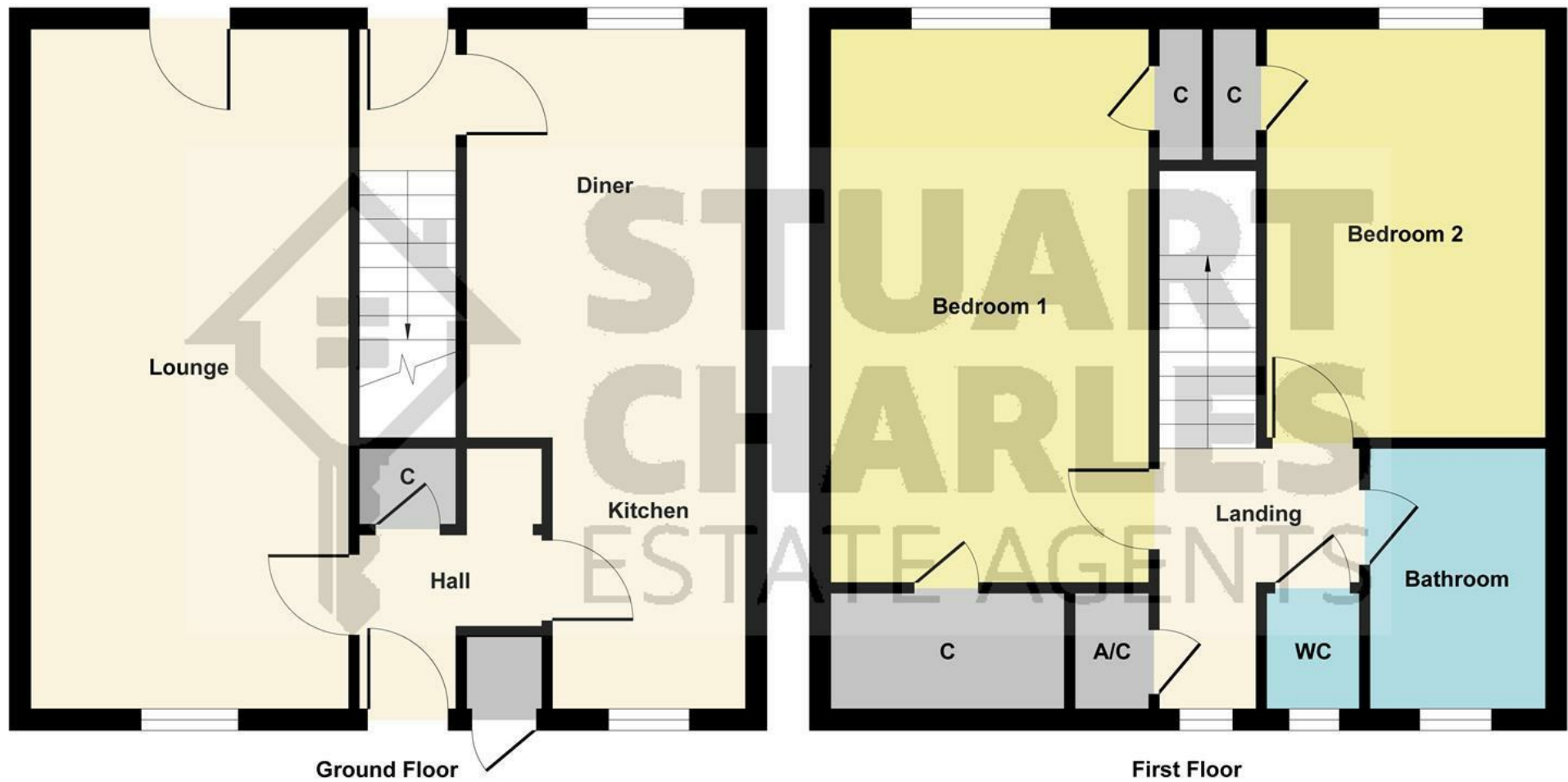


Illustration for identification purposes only, measurements are approximate, not to scale.
Produced by Elements Property

