



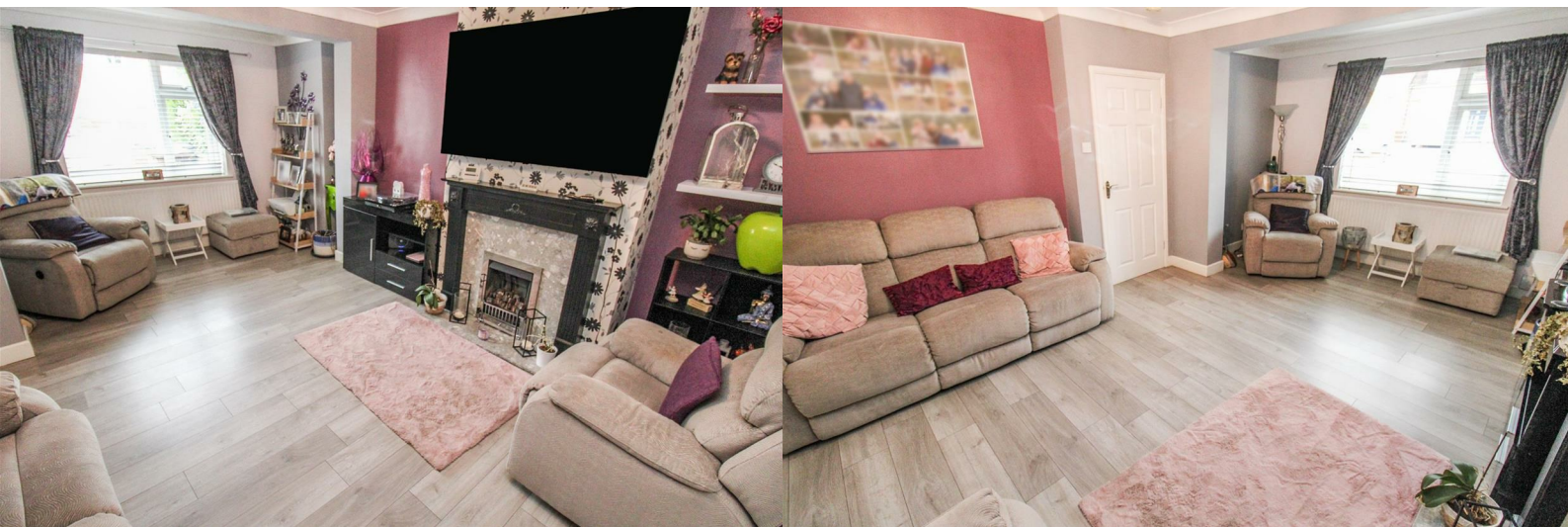
**STUART  
CHARLES**  
ESTATE AGENTS



## Rowlett Road

, Corby, NN17 2BP

£180,000



# Rowlett Road

, Corby, NN17 2BP

£180,000



## Entrance Hall

Entered via a double glazed door, radiator, stairs rising to first floor landing, door to:

## Lounge

16'9 x 12'16 (5.11m x 3.66m)

Double glazed window to front elevation, radiator, tv point, telephone point, door to:

## Kitchen/Diner

15'55 max x 17'92 max (4.57m max x 5.18m max)

Fitted to comprise a range of base and eye level units with a one and half bowl sink and drainer, electric hob with extractor, electric oven, integrated dishwasher, space for free standing fridge/freezer. space for automatic washing machine, radiator, under stairs storage, double glazed French doors to rear elevation, door to:

## Bathroom

8'86 x 5'02 (2.44m x 1.57m)

Fitted to comprise a three piece suite consisting of a walk in electric feed double shower cubicle, low level wash hand basin, low level pedestal, radiator, double glazed window to rear elevation.

## First Floor Landing

Loft access, doors to:

## Bedroom One

15'55 x 7'20 (4.57m x 2.13m)

Two double glazed windows to rear elevation, two radiators.

## Bedroom Two

12'47 x 8'6 (3.66m x 2.59m)

Double glazed window to front elevation, radiator, storage cupboard with combi boiler.

## Outside

Front: A driveway provides off road parking and is enclosed by low level walls to sides.

Rear: A patio area leads onto a artificial grass lawn and is enclosed by timber fencing to all sides, shared access gate to side.



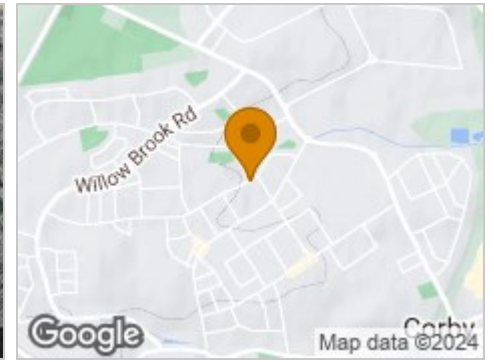
### Road Map



### Hybrid Map



### Terrain Map



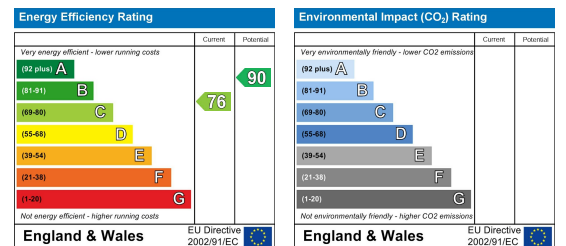
### Floor Plan



### Viewing

Please contact our Stuart Charles Estate Agents Office on 01536 234264 if you wish to arrange a viewing appointment for this property or require further information.

### Energy Efficiency Graph



These particulars, whilst believed to be accurate are set out as a general outline only for guidance and do not constitute any part of an offer or contract. Intending purchasers should not rely on them as statements of representation of fact, but must satisfy themselves by inspection or otherwise as to their accuracy. No person in this firm's employment has the authority to make or give any representation or warranty in respect of the property.