



**STUART
CHARLES**
ESTATE AGENTS



Prestoe Close

, Corby, NN17 5GF

£195,000



Prestoe Close

, Corby, NN17 5GF

£195,000



Entrance Hall

Entered via a double glazed door, stairs rising to first floor landing.

Landing

Double glazed Velux window to rear, airing cupboard, doors to:

Living Room/Dining Room

17'6 x 10'2 (5.33m x 3.10m)

Two double glazed windows to front elevation, radiator, multi media point, archway to:

Kitchen/Breakfast Room

13'8 x 7'3 (4.17m x 2.21m)

Fitted to comprise a range of base and eye level units with a single steel sink and drainer, electric hob with extractor, electric oven, integrated fridge/freezer, integrated washing machine, integrated dishwasher, double glazed Velux window to rear elevation.

Bedroom One

11'3 x 10'6 (3.43m x 3.20m)

Double glazed window to front elevation, radiator, tv point.

Bedroom Two

11'3 x 10'4 (3.43m x 3.15m)

Double glazed window to front elevation, radiator, built in wardrobe.

Bathroom

8'0 x 6'3 (2.44m x 1.91m)

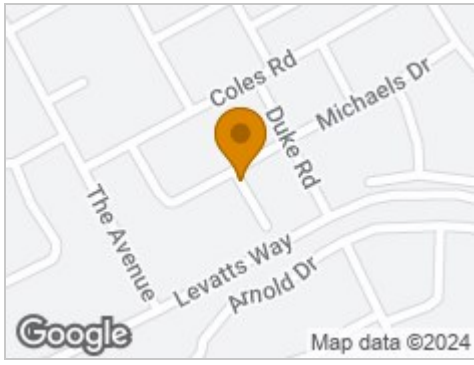
Fitted to comprise a three piece suite consisting of a panel bath with mains feed shower over, low level wash hand basin, low level pedestal, radiator, double glazed Velux window to rear.

Outside

Off road parking is located to the left hand side of the front door, an additional storage shed is located under the main building.



Road Map



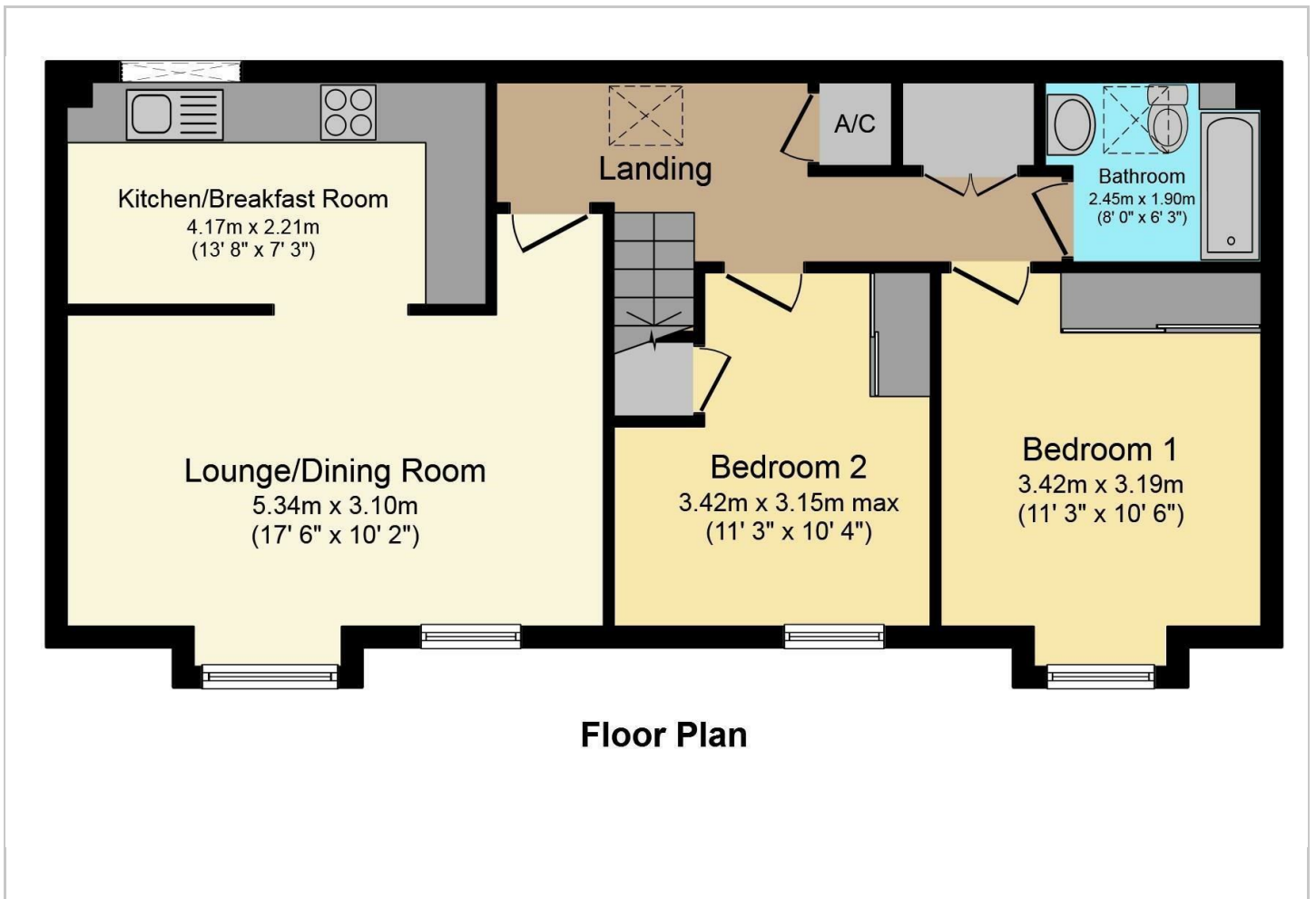
Hybrid Map



Terrain Map



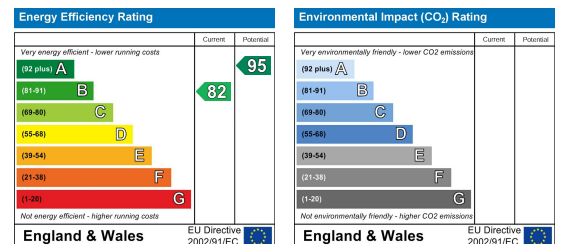
Floor Plan



Viewing

Please contact our Stuart Charles Estate Agents Office on 01536 234264 if you wish to arrange a viewing appointment for this property or require further information.

Energy Efficiency Graph



These particulars, whilst believed to be accurate are set out as a general outline only for guidance and do not constitute any part of an offer or contract. Intending purchasers should not rely on them as statements of representation of fact, but must satisfy themselves by inspection or otherwise as to their accuracy. No person in this firm's employment has the authority to make or give any representation or warranty in respect of the property.