



LA PROPERTY
DISCOVERY



The Life Building 3

1 Boston Street, Hulme, M15 5AY

£1,100 PCM



2



1



1



C

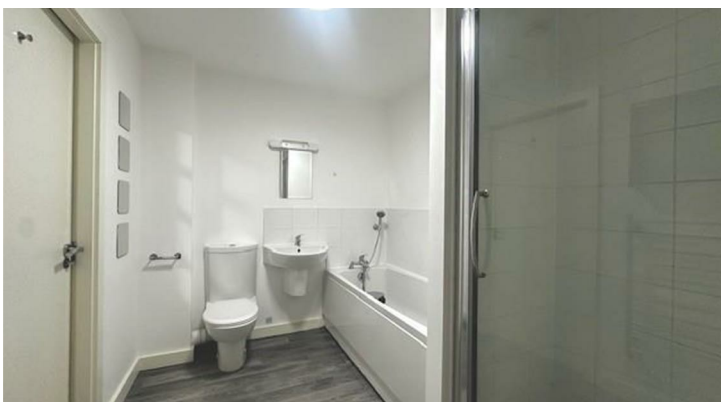
The Life Building 3, 1 Boston Street, Hulme, M15 5AY

Live, Love, Life Building!

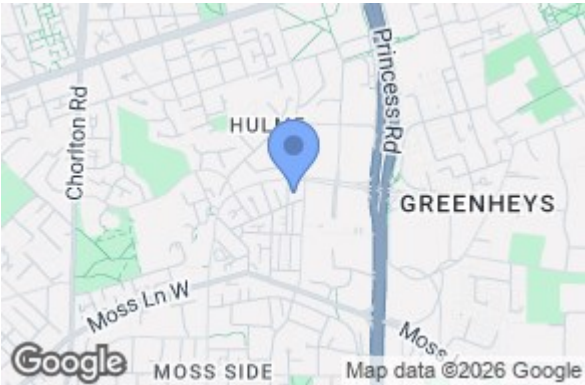
LA Property Discovery is pleased to offer for rent this two bedroom apartment in the popular Life Building in Hulme. Situated a stone's throw from the nearest bus stop, a short walk into the city centre and with Princess Road and the Mancunian Way on doorstep, it couldn't be better connected. The shops on Hulme High Street are immediately adjacent making the Life Building the byword for convenience.

The flat itself comprises two good sized double bedroom, open plan living room/kitchen and separate bathroom. The flat is offered fully furnished and a parking space is available.

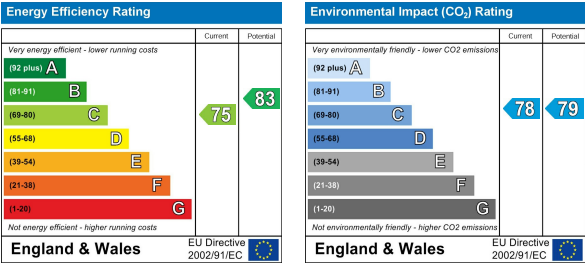
Don't delay, enquire today!



Area Map



Energy Efficiency Graph



These particulars, whilst believed to be accurate are set out as a general outline only for guidance and do not constitute any part of an offer or contract. Intending purchasers should not rely on them as statements of representation of fact, but must satisfy themselves by inspection or otherwise as to their accuracy. No person in this firm's employment has the authority to make or give any representation or warranty in respect of the property.

58 Beech Road, Chorlton, Manchester, M21 9EG

Tel: 0161 510 9555 Email: homes@LAPropertyDiscovery.co.uk www.LAPropertyDiscovery.co.uk