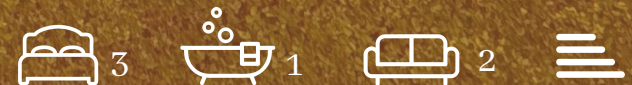




71 Newport Road
Manchester, M21 9WL

Price Guide £525,000



71 Newport Road, Manchester, M21 9WL

Welcome to this charming 3-bedroom semi-detached house located on a popular tree lined road, in the sought-after area of Chorlton, Manchester. This property is perfect for those looking for a family home in a desirable location.

As you step inside, the character and warmth of this lovely house unfolds. The original stained glass windows add a touch of elegance, adding to the light and airy feel of the property, giving it a unique and inviting feel.

One of the highlights of this home is the south-facing garden, perfect for enjoying sunny days and al-fresco dining with family and friends or relaxing in your own private outdoor space, screened by greenery.

Perfectly situated for easy access to a variety of local amenities including Longford park at the end of the road, independent shops, cafes and restaurants. All of these are within easy walking distance, making daily life convenient and enjoyable.

Don't miss the opportunity to make this house your home. A perfect opportunity for a buyer to put their own stamp on the home, with plenty of potential to personalise and modernise to their taste. With its characterful features, spacious layout, and ideal location, this property has all the makings of a wonderful family home. Contact us today to arrange a viewing and start envisioning your life in this delightful Chorlton residence.

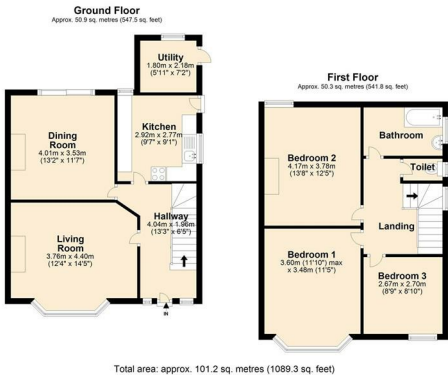


These particulars, whilst believed to be accurate are set out as a general outline only for guidance and do not constitute any part of an offer or contract. Intending purchasers should not rely on them as statements of representation of fact, but must satisfy themselves by inspection or otherwise as to their accuracy. No person in this firms employment has the authority to make or give any representation or warranty in respect of the property.

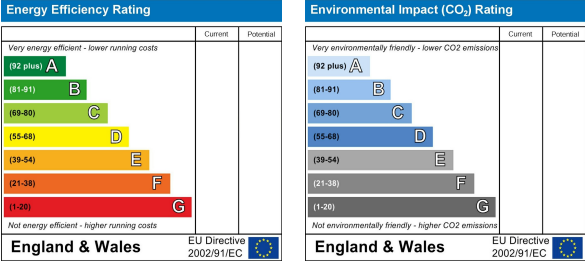
Area Map



Floor Plan



Energy Efficiency Graph



58 Beech Road, Chorlton, Manchester, M21 9EG

Tel: 0161 510 9555 Email: homes@LAPropertyDiscovery.co.uk www.LAPropertyDiscovery.co.uk