



123-125 Beech Road
Manchester, M21 9EQ
Price Guide £315,000



123-125 Beech Road, Manchester, M21 9EQ

Nestled on the charming Beech Road in Manchester, this modern apartment offers a delightful blend of comfort and convenience. Built in 2006, the property boasts a contemporary design that is both stylish and functional.

Upon entering, you are welcomed into a spacious reception room, perfect for relaxation or entertaining guests. The apartment features two well-appointed bedrooms, providing ample space for rest and privacy. With two bathrooms, morning routines and guest visits are made effortless, ensuring that everyone has their own space.

The location on Beech Road is particularly appealing, as it offers easy access to local amenities, parks, and transport links, making it an ideal choice for both professionals and families alike.

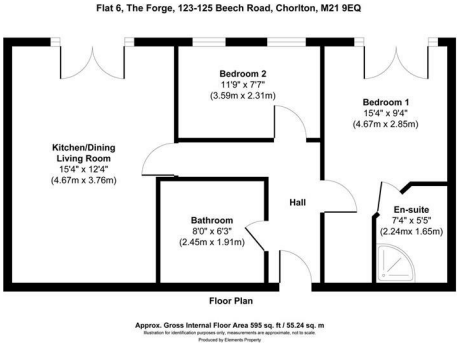
Whether you are looking to invest or seeking a new home, this property presents a wonderful opportunity to enjoy all that Chorlton has to offer. Don't miss the chance to make this apartment your own.



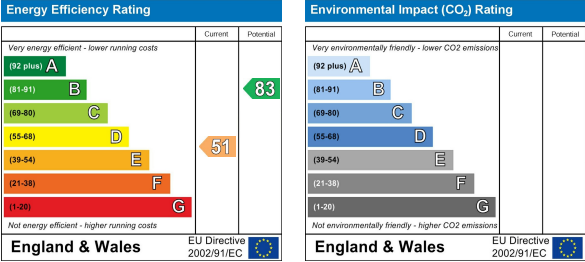
Area Map



Floor Plan



Energy Efficiency Graph



These particulars, whilst believed to be accurate are set out as a general outline only for guidance and do not constitute any part of an offer or contract. Intending purchasers should not rely on them as statements of representation of fact, but must satisfy themselves by inspection or otherwise as to their accuracy. No person in this firms employment has the authority to make or give any representation or warranty in respect of the property.