



28 Higson Avenue
Chorlton, M21 9FW
£1,500 PCM

28 Higson Avenue, Chorlton, M21 9FW

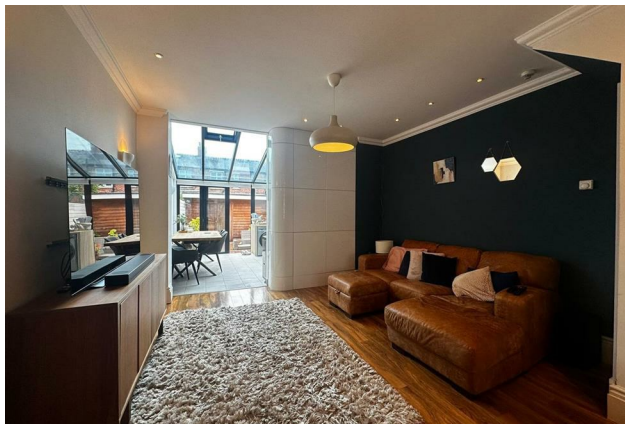
HEAVENLY HIGSON! This stunning house located just off the trendy Beech Road in the heart of Chorlton Green will not be available for long!

The design of this property is very modern and contemporary, from clever storage solutions to the bi-folding doors leading onto the low maintenance decked garden to the rear, the attention to detail in the design of this property will impress!

Additional features include, underfloor heating, double glazing throughout, loft storage plus a low maintenance South facing garden with rear access gate.

This property is perfect for a professional couple, please contact L A Property Discovery on 0161 510 9555 for more information or to arrange a viewing.

You're in safe hands at L A Property Discovery.

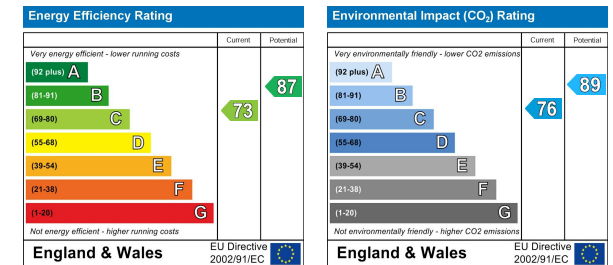


Area Map



Floor Plan

Energy Efficiency Graph



These particulars, whilst believed to be accurate are set out as a general outline only for guidance and do not constitute any part of an offer or contract. Intending purchasers should not rely on them as statements of representation of fact, but must satisfy themselves by inspection or otherwise as to their accuracy. No person in this firm's employment has the authority to make or give any representation or warranty in respect of the property.

58 Beech Road, Chorlton, Manchester, M21 9EG

Tel: 0161 510 9555 Email: homes@LAPropertyDiscovery.co.uk www.LAPropertyDiscovery.co.uk