

Property ref: 111480

## Friary Court, Tudor Road, Reading, RG1 1HN

**£1,550 PCM**

**HASLAM'S**  
Lettings



We are pleased to present this stunning two bedroom apartment, located next to Reading train station and within walking distance to The Oracle. The property is available fully furnished and is decorated to a high standard.  
Reading Borough Council tax band C.

**Available 16/03/2026**

- Open plan living/kitchen area with granite worktop and designer sofas
- Two double bedrooms with built in wardrobes; Master with en-suite shower room
- Second floor position; Gas central heating; EPC rating B
- Fully fitted designer kitchen with all appliances; Modern fixtures and fittings
- Modern security system which can be linked to mobile phone; Family bathroom
- No parking; Furnished; Managed by HASLAM'S

\*Fees For Assured Shorthold Tenancies: when you rent a property from us you will be required to pay a sum equivalent to one weeks' rent for a holding deposit. Upon successful application, this amount will be off set against your first months' rent. You will also be required to pay a security deposit equivalent to 5 weeks' rent which will be held and protected in line with Deposit legislation. For more information about our fees please visit: [www.haslams.net](http://www.haslams.net)  
Fees for all other tenancies (Non Housing Act Tenancies / Company Lets): when you rent a property from us we will charge you a one-off fee per property. This charge is the equivalent of 15 days of the monthly rental charge (+VAT) with a minimum fee of £450 (inc.VAT) up to a maximum of £650 (inc.VAT). Other fees may apply depending on your circumstances.

**0118 960 1055**

**[lettings@haslams.net](mailto:lettings@haslams.net) [www.haslams.net](http://www.haslams.net)**

**Haslams Estate Agents Ltd, 159 Friar Street, Reading, Berkshire, RG1 1HE**

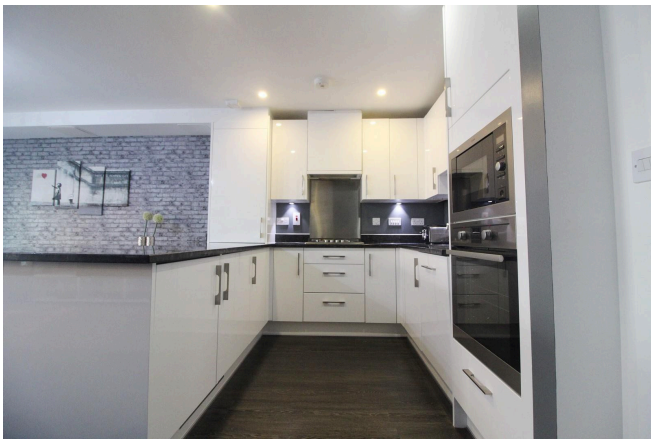
Water supply: Mains

Drainage info: Mains

Electricity supply: Mains

Gas supply: Mains

Broadband/Mobile Info: Connections available. For an indication of specific speeds and supply of Broadband and Mobile, we advise applicants go to the Ofcom website Broadband and Mobile Coverage Checker.

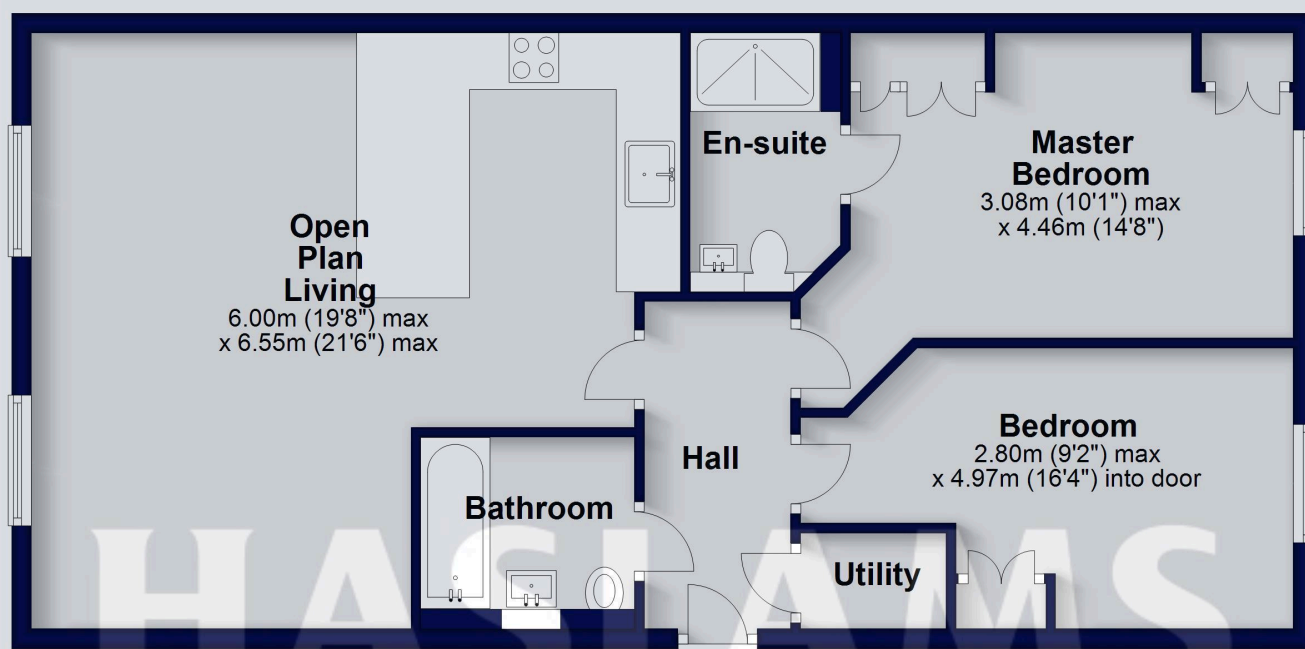






## Second Floor

Approx. 76.6 sq. metres (824.0 sq. feet)



Total area: approx. 76.6 sq. metres (824.0 sq. feet)

This floorplan is for illustrative purposes only and is not to scale. The total area includes all the areas shown.

Plan produced using PlanUp.