

Property ref: 143752

Huntley Wharf, Reading, RG1 3FZ

£1,350 PCM

HASLAM'S
Lettings



A well presented one bedroom 9th floor apartment located in Reading town centre built by Berkeley Homes.
Reading Borough Council - Tax Band D.

Communal boiler

Water supply: Mains

Drainage info: Mains

Electricity supply: Mains

Broadband/Mobile Info: Connections available. For an indication of specific speeds and supply of Broadband and Mobile, we advise applicants go to the Ofcom website Broadband and Mobile Coverage Checker

Available 09/03/2026

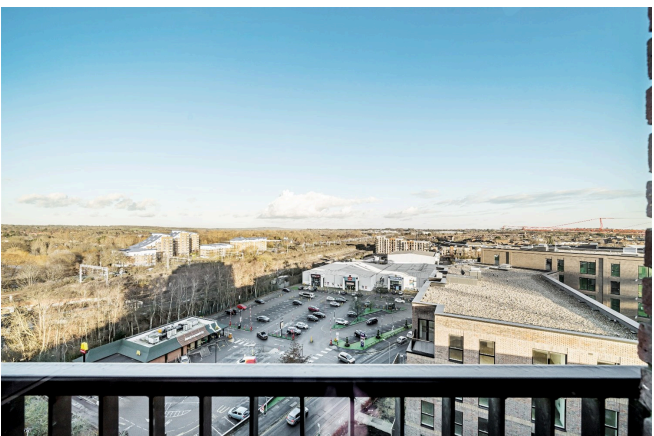
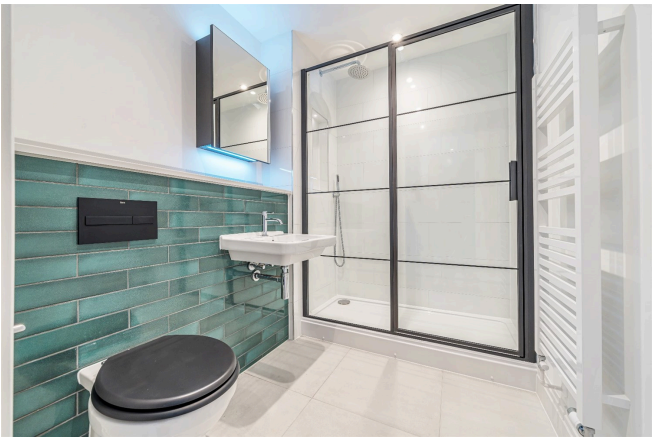
- Double bedroom with built in wardrobe
- Bathroom with shower over bath
- Fully fitted kitchen
- Private balcony; £55.00 sundry additional to the rent to include - heating and hot water
- No parking; EPC rating B
- Furnished; Managed by HASLAM'S

*Fees For Assured Shorthold Tenancies: when you rent a property from us you will be required to pay a sum equivalent to one weeks' rent for a holding deposit. Upon successful application, this amount will be off set against your first months' rent. You will also be required to pay a security deposit equivalent to 5 weeks' rent which will be held and protected in line with Deposit legislation. For more information about our fees please visit: www.haslams.net
Fees for all other tenancies (Non Housing Act Tenancies / Company Lets): when you rent a property from us we will charge you a one-off fee per property. This charge is the equivalent of 15 days of the monthly rental charge (+VAT) with a minimum fee of £450 (inc.VAT) up to a maximum of £650 (inc.VAT). Other fees may apply depending on your circumstances.

0118 960 1055

lettings@haslams.net www.haslams.net

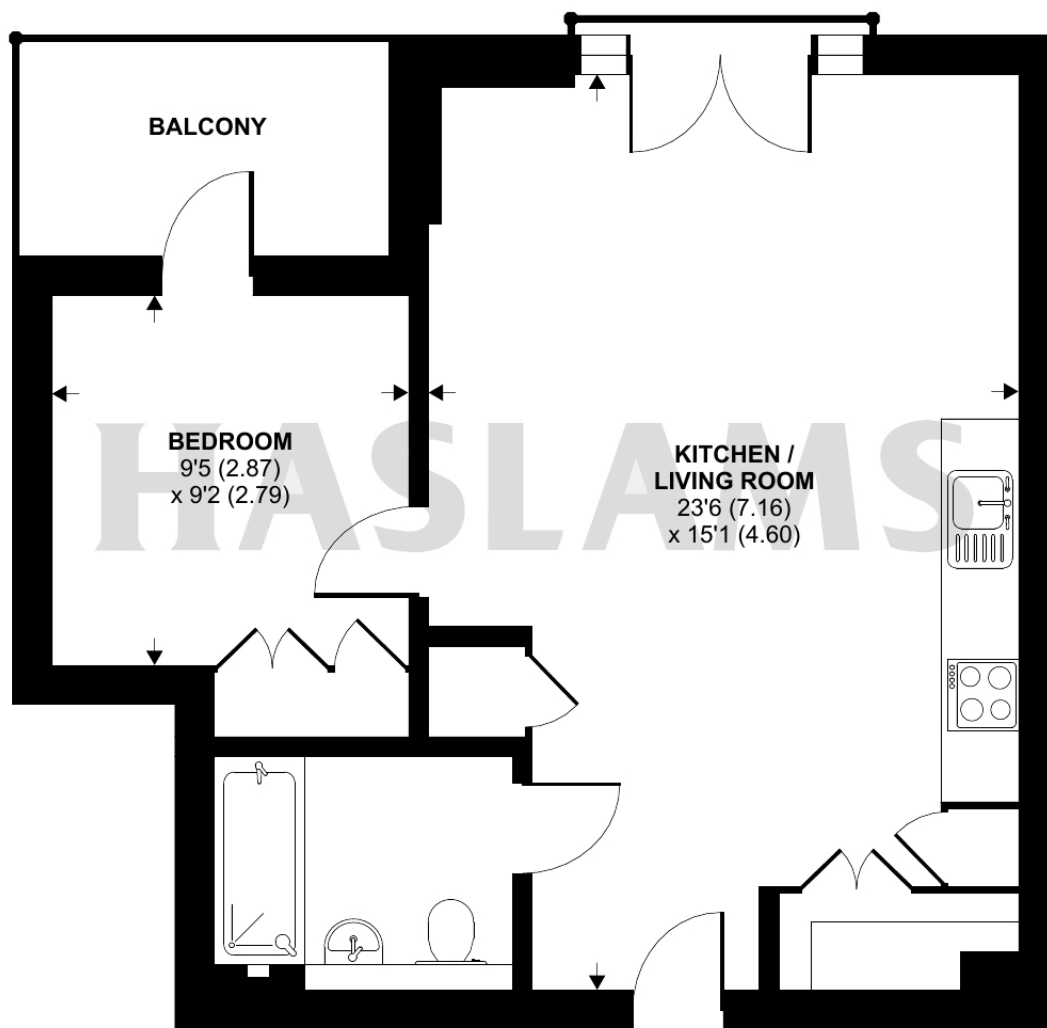
Haslams Estate Agents Ltd, 159 Friar Street, Reading, Berkshire, RG1 1HE



Palmer Street, Reading, RG1

Approximate Area = 489 sq ft / 45.4 sq m

For identification only - Not to scale



NINTH FLOOR

**Certified
Property
Measurer**

Floor plan produced in accordance with RICS Property Measurement Standards incorporating International Property Measurement Standards (IPMS2 Residential). © n1cheom 2023. Produced for Haslamss. REF: 939873