

Property ref: 49340

## Ashmere Close, Reading, RG31 7EN

**£850 PCM**

**HASLAMs**  
Lettings



A modern studio apartment located in Calcot, with easy access to the M4 and local bus routes.

West Berkshire Council tax band B.

Water supply: Mains

Drainage info: Mains

Electricity supply: Mains

Gas supply: Mains

Broadband/Mobile Info: Connections available. For an indication of specific speeds and supply of Broadband and Mobile, we advise applicants go to the Ofcom website Broadband and Mobile Coverage Checker.

- Double bedroom/living area
- Fitted kitchen with appliances
- Bathroom with shower over the bath
- Gas central heating; EPC rating C
- Allocated parking
- Furnished; Managed by HASLAMs

**Available 03/03/2026**

\*Fees For Assured Shorthold Tenancies: when you rent a property from us you will be required to pay a sum equivalent to one weeks' rent for a holding deposit. Upon successful application, this amount will be off set against your first months' rent. You will also be required to pay a security deposit equivalent to 5 weeks' rent which will be held and protected in line with Deposit legislation. For more information about our fees please visit: [www.haslams.net](http://www.haslams.net)  
Fees for all other tenancies (Non Housing Act Tenancies / Company Lets): when you rent a property from us we will charge you a one-off fee per property. This charge is the equivalent of 15 days of the monthly rental charge (+VAT) with a minimum fee of £450 (inc.VAT) up to a maximum of £650 (inc.VAT). Other fees may apply depending on your circumstances.

**0118 960 1055**

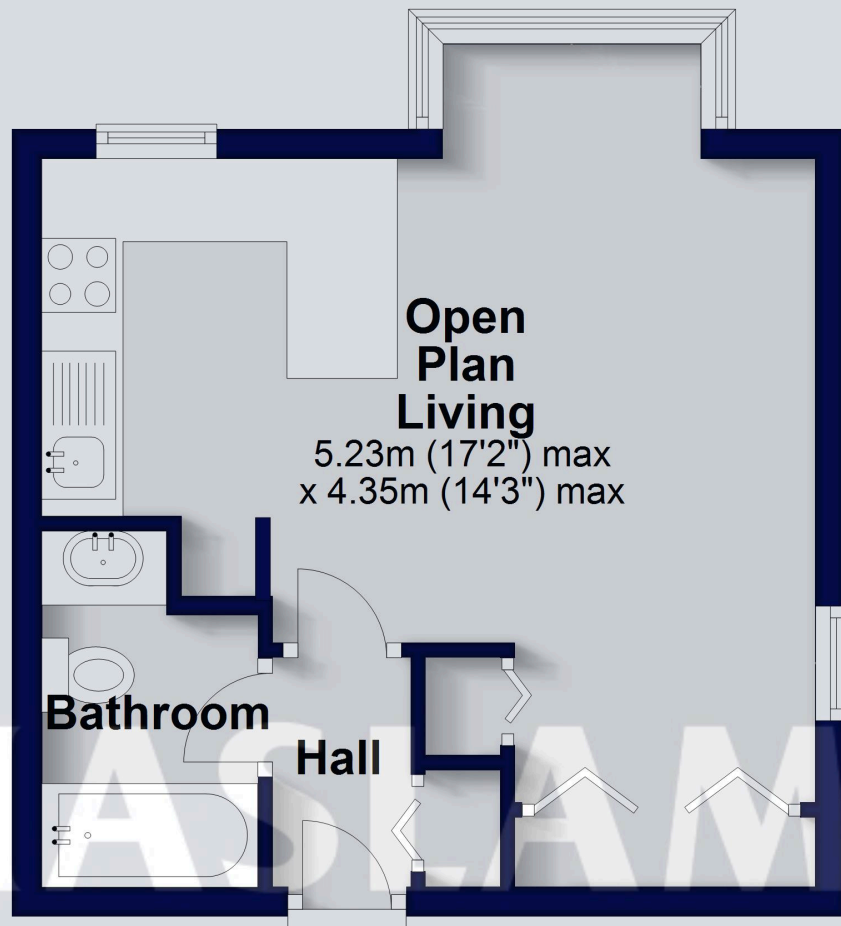
**[lettings@haslams.net](mailto:lettings@haslams.net) [www.haslams.net](http://www.haslams.net)**

**Haslams Estate Agents Ltd, 159 Friar Street, Reading, Berkshire, RG1 1HE**



## First Floor

Approx. 27.1 sq. metres (291.9 sq. feet)



Total area: approx. 27.1 sq. metres (291.9 sq. feet)

This floorplan is for illustrative purposes only and is not to scale.  
The total area includes all the areas shown.  
Plan produced using PlanUp.