

Property ref: 160519

**Sherman Road,  
Reading, RG1 2PJ**

**£1,450 PCM**

**HASLAM'S**  
Lettings



Very well presented bedroom terrace house located within easy walking distance of the town centre.  
Reading Borough Council Tax Band B  
Article 4 Area

- Two double bedrooms plus one single
- Modern fitted kitchen including appliances
- Bathroom with shower over bath; Gas central heating
- Open plan reception room; EPC Rating C
- Easily maintained garden; parking by permit on street
- Furnished: Managed by HASLAM'S

**Available 02/04/2026**

\*Fees For Assured Shorthold Tenancies: when you rent a property from us you will be required to pay a sum equivalent to one weeks' rent for a holding deposit. Upon successful application, this amount will be off set against your first months' rent. You will also be required to pay a security deposit equivalent to 5 weeks' rent which will be held and protected in line with Deposit legislation. For more information about our fees please visit: [www.haslams.net](http://www.haslams.net)  
Fees for all other tenancies (Non Housing Act Tenancies / Company Lets): when you rent a property from us we will charge you a one-off fee per property. This charge is the equivalent of 15 days of the monthly rental charge (+VAT) with a minimum fee of £450 (inc.VAT) up to a maximum of £650 (inc.VAT). Other fees may apply depending on your circumstances.

**0118 960 1055**

**[lettings@haslams.net](mailto:lettings@haslams.net) [www.haslams.net](http://www.haslams.net)**

**Haslams Estate Agents Ltd, 159 Friar Street, Reading, Berkshire, RG1 1HE**

Water supply: Mains

Drainage info: Mains

Electricity supply: Mains

Gas supply: Mains

Broadband/Mobile Info: Connections available. For an indication of specific speeds and supply of Broadband and Mobile, we advise applicants go to the Ofcom website Broadband and Mobile Coverage Checker.

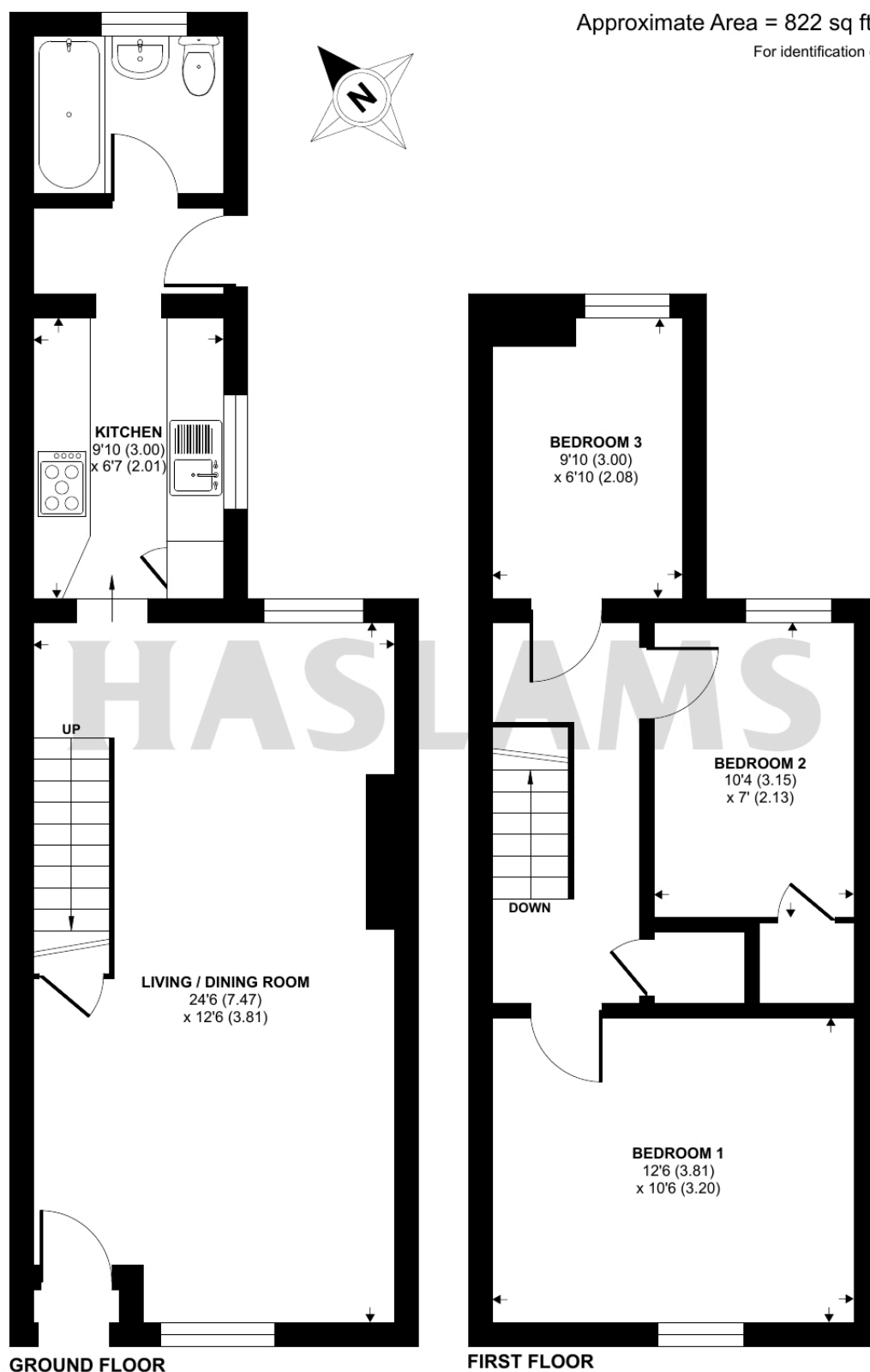




# Sherman Road, Reading, RG1

Approximate Area = 822 sq ft / 76.3 sq m

For identification only - Not to scale



Floor plan produced in accordance with RICS Property Measurement Standards incorporating International Property Measurement Standards (IPMS2 Residential). © n1cheom 2024. Produced for Haslamss. REF: 1073853