

Property ref: 75992

## St James Wharf, Reading, RG1 3JJ

£1,750 PCM

**HASLAM'S**  
Lettings



An impressive third floor apartment within the sought after St James Wharf riverside development, which is conveniently situated close to the Forbury Gardens and is within walking distance of Reading mainline station and the Oracle shopping centre.

Reading Borough Council tax band D.

Water supply: Mains

Drainage info: Mains

Electricity supply: Mains

Broadband/Mobile Info: Connections available. For an indication of specific speeds and supply of Broadband and Mobile, we advise applicants go to the Ofcom website Broadband and Mobile Coverage Checker.

- Two double bedrooms; Master with en-suite
- Well fitted kitchen area with appliances
- Modern bathroom suite with shower
- Allocated parking; Electric heating
- Furnished; EPC rating C
- Managed by HASLAM'S

### Available Now

\*Fees For Assured Shorthold Tenancies: when you rent a property from us you will be required to pay a sum equivalent to one weeks' rent for a holding deposit. Upon successful application, this amount will be off set against your first months' rent. You will also be required to pay a security deposit equivalent to 5 weeks' rent which will be held and protected in line with Deposit legislation. For more information about our fees please visit: [www.haslams.net](http://www.haslams.net)  
Fees for all other tenancies (Non Housing Act Tenancies / Company Lets): when you rent a property from us we will charge you a one-off fee per property. This charge is the equivalent of 15 days of the monthly rental charge (+VAT) with a minimum fee of £450 (inc.VAT) up to a maximum of £650 (inc.VAT). Other fees may apply depending on your circumstances.

**0118 960 1055**

**[lettings@haslams.net](mailto:lettings@haslams.net) [www.haslams.net](http://www.haslams.net)**

**Haslams Estate Agents Ltd, 159 Friar Street, Reading, Berkshire, RG1 1HE**

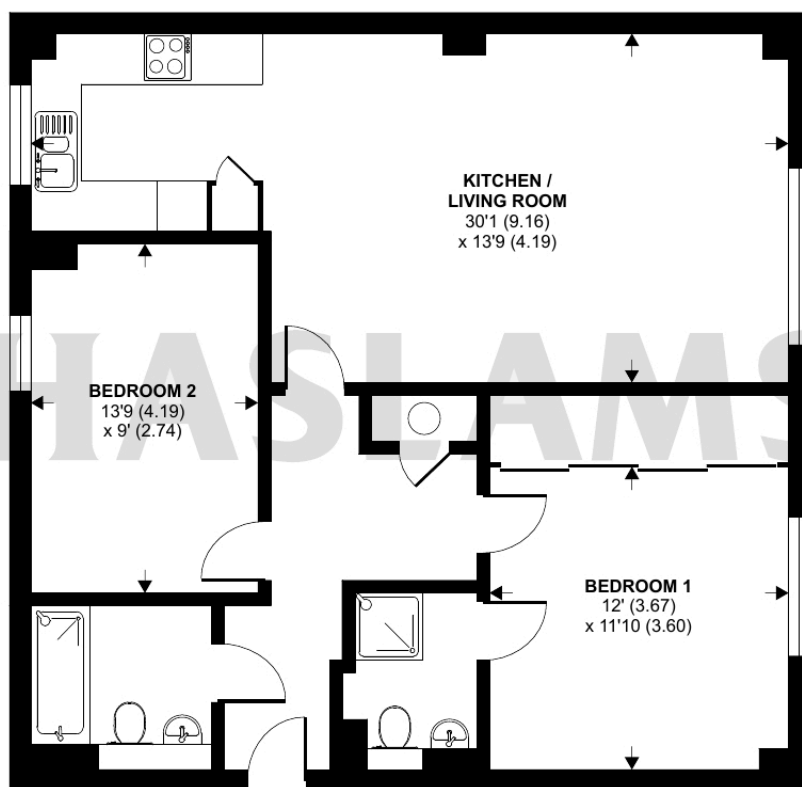




# St. James Wharf, Forbury Road, Reading, RG1

Approximate Area = 875 sq ft / 81.3 sq m

For identification only - Not to scale



THIRD FLOOR



Floor plan produced in accordance with RICS Property Measurement 2nd Edition, Incorporating International Property Measurement Standards (IPMS2 Residential). © n̄checom 2026. Produced for Haslamss. REF: 1403444