

Property ref: 119919

**Florida Court,
Reading, RG1 6NX****£1,600 PCM****HASLAM'S**
Lettings

A very well presented and spacious three bedroom apartment, which benefits from being within walking distance of Reading town centre and easy access to the M4 motorway.
Reading Borough Council tax band B.

- Two double bedrooms & one single
- Separate fitted kitchen
- Located in the Downshire Square conservation area
- Gas central heating; EPC rating C
- Ground floor position, Parking to the rear
- Unfurnished; Managed by HASLAM'S

Available Now

*Fees For Assured Shorthold Tenancies: when you rent a property from us you will be required to pay a sum equivalent to one weeks' rent for a holding deposit. Upon successful application, this amount will be off set against your first months' rent. You will also be required to pay a security deposit equivalent to 5 weeks' rent which will be held and protected in line with Deposit legislation. For more information about our fees please visit: www.haslams.net
Fees for all other tenancies (Non Housing Act Tenancies / Company Lets): when you rent a property from us we will charge you a one-off fee per property. This charge is the equivalent of 15 days of the monthly rental charge (+VAT) with a minimum fee of £450 (inc.VAT) up to a maximum of £650 (inc.VAT). Other fees may apply depending on your circumstances.

0118 960 1055**lettings@haslams.net www.haslams.net****Haslams Estate Agents Ltd, 159 Friar Street, Reading, Berkshire, RG1 1HE**

Water supply: Mains

Drainage info: Mains

Electricity supply: Mains

Gas supply: Mains

Broadband/Mobile Info: Connections available. For an indication of specific speeds and supply of Broadband and Mobile, we advise applicants go to the Ofcom website Broadband and Mobile Coverage Checker.





<https://vimeo.com/1156487975?share=copy&fl=sv&fe=ci>

Florida Court, Bath Road, Reading, RG1

Approximate Area = 870 sq ft / 80.8 sq m

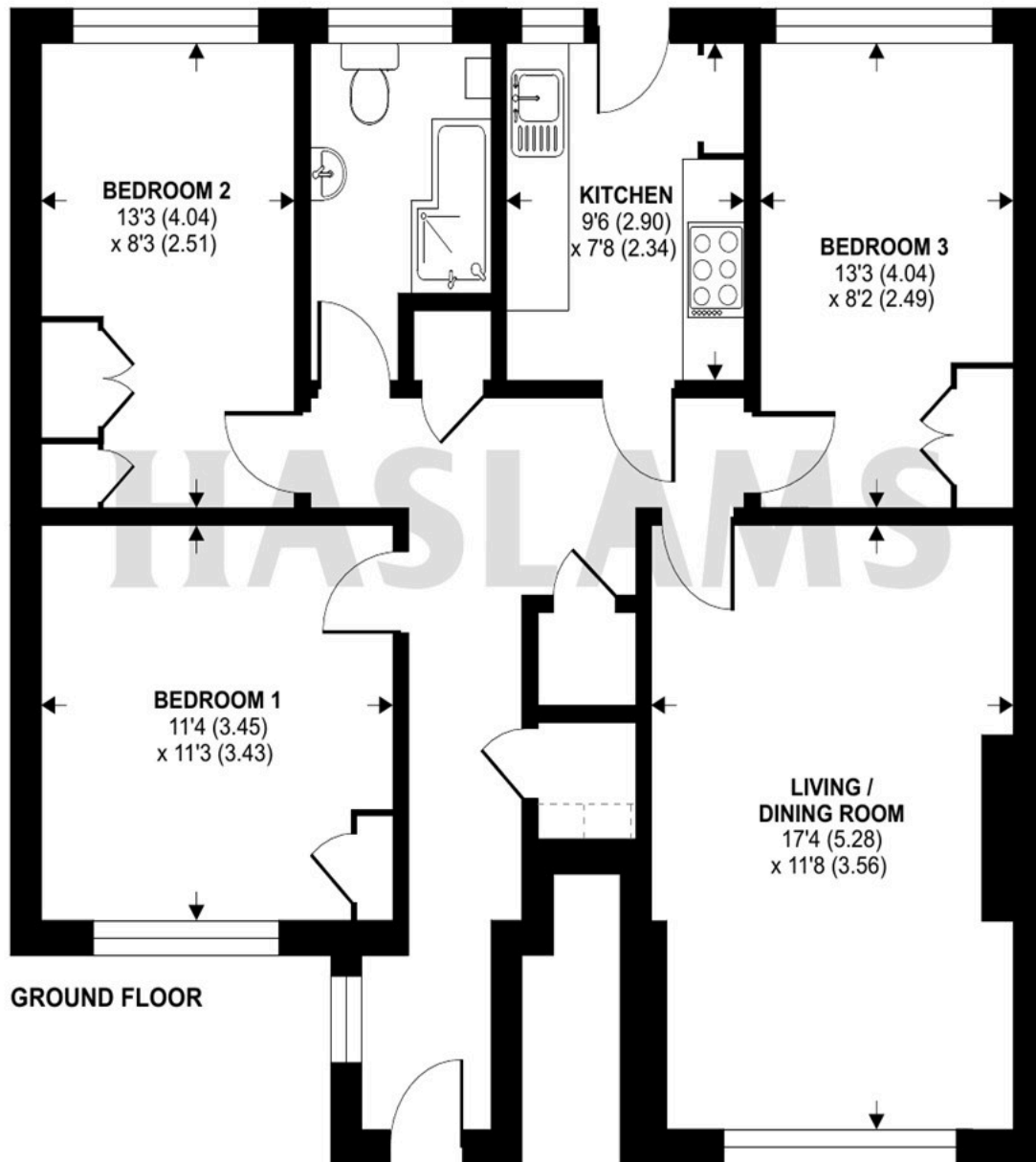
Limited Use Area(s) = 3 sq ft / 0.3 sq m

Total = 873 sq ft / 81.1 sq m

For identification only - Not to scale



Denotes restricted
head height



Floor plan produced in accordance with RICS Property Measurement 2nd Edition,
Incorporating International Property Measurement Standards (IPMS2 Residential). © nichecom 2026.
Produced for Haslam's. REF: 1400949