

Property ref: 168802

Phoenix House, Reading, RG1 7UH

£1,495 PCM

HASLAM'S
Lettings



A well presented, top floor, two bedroom apartment located slightly to the west of Reading town centre. This apartment is within a short distance to both Reading West and Reading mainline stations as well as the Town Centre. The property benefits from a large living/dining area with balcony, separate kitchen, family bathroom and two double bedrooms with en-suite to the master. The property also benefits from secure gated allocated parking.
Reading Borough Council Tax Band D.

Available 17/03/2026

- Top floor apartment
- Two double bedrooms, master with en-suite
- Fully fitted kitchen with appliances
- Secure gated allocated parking
- Furnished; Gas central heating
- EPC rating C; Managed by LANDLORD

*Fees For Assured Shorthold Tenancies: when you rent a property from us you will be required to pay a sum equivalent to one weeks' rent for a holding deposit. Upon successful application, this amount will be off set against your first months' rent. You will also be required to pay a security deposit equivalent to 5 weeks' rent which will be held and protected in line with Deposit legislation. For more information about our fees please visit: www.haslams.net
Fees for all other tenancies (Non Housing Act Tenancies / Company Lets): when you rent a property from us we will charge you a one-off fee per property. This charge is the equivalent of 15 days of the monthly rental charge (+VAT) with a minimum fee of £450 (inc.VAT) up to a maximum of £650 (inc.VAT). Other fees may apply depending on your circumstances.

0118 960 1055

lettings@haslams.net www.haslams.net

Haslams Estate Agents Ltd, 159 Friar Street, Reading, Berkshire, RG1 1HE

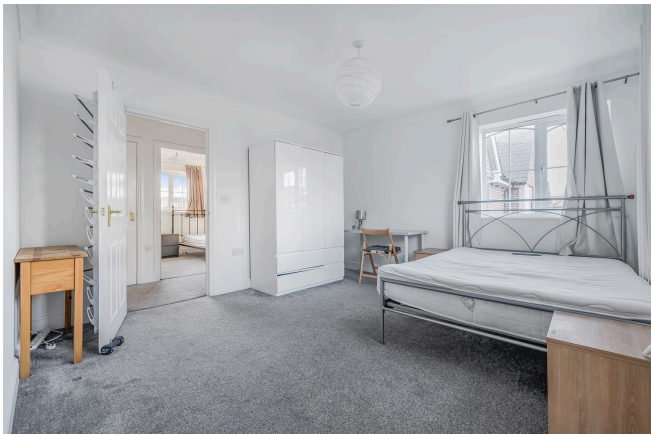
Water supply: Mains

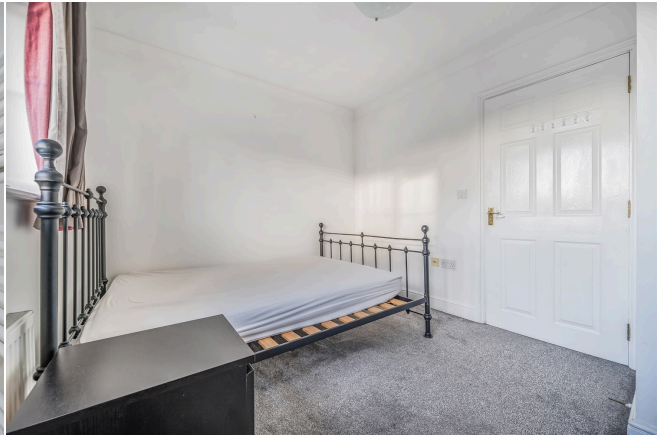
Drainage info: Mains

Electricity supply: Mains

Gas supply: Mains

Broadband/Mobile Info: Connections available. For an indication of specific speeds and supply of Broadband and Mobile, we advise applicants go to the Ofcom website Broadband and Mobile Coverage Checker.

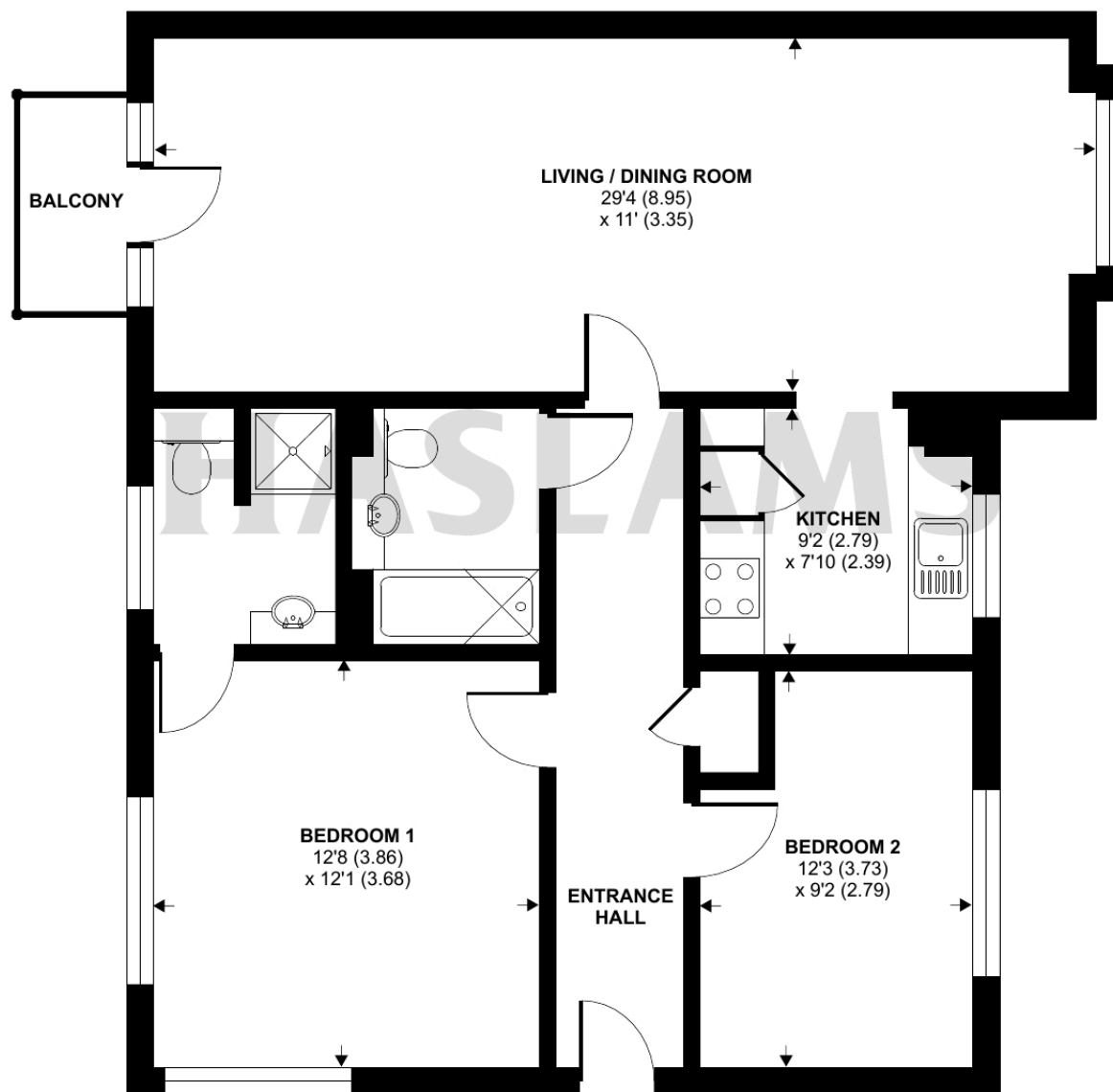




Oxford Road, RG1

Approximate Area = 868 sq ft / 80.6 sq m

For identification only - Not to scale

**SECOND FLOOR**

Floor plan produced in accordance with RICS Property Measurement 2nd Edition, Incorporating International Property Measurement Standards (IPMS2 Residential). © n°checom 2025. Produced for Haslams. REF: 1252693