

Property ref: 74223

Eldon Lodge, Reading, RG1 4NH

£1,600 PCM

HASLAMs
Lettings



A ground floor two bedroom apartment located within this impressive Grade II listed conversion within the Eldon Conservation Area; convenient for Royal Berkshire Hospital, town centre and railway station.
Reading Borough Council tax band C.

Available Now

- Two double size bedrooms with built-in wardrobes
- Bathroom with independant shower above
- Open plan living room/kitchen; EPC rating C
- Modern kitchen including appliances; Gas central heating
- Secure gated grounds with allocated parking
- Furnished; Managed by HASLAMs

*Fees For Assured Shorthold Tenancies: when you rent a property from us you will be required to pay a sum equivalent to one weeks' rent for a holding deposit. Upon successful application, this amount will be off set against your first months' rent. You will also be required to pay a security deposit equivalent to 5 weeks' rent which will be held and protected in line with Deposit legislation. For more information about our fees please visit: www.haslamss.net
Fees for all other tenancies (Non Housing Act Tenancies / Company Lets): when you rent a property from us we will charge you a one-off fee per property. This charge is the equivalent of 15 days of the monthly rental charge (+VAT) with a minimum fee of £450 (inc.VAT) up to a maximum of £650 (inc.VAT). Other fees may apply depending on your circumstances.

0118 960 1055

lettings@haslamss.net www.haslamss.net

Haslamss Estate Agents Ltd, 159 Friar Street, Reading, Berkshire, RG1 1HE

Water supply: Mains

Drainage info: Mains

Electricity supply: Mains

Gas supply: Mains

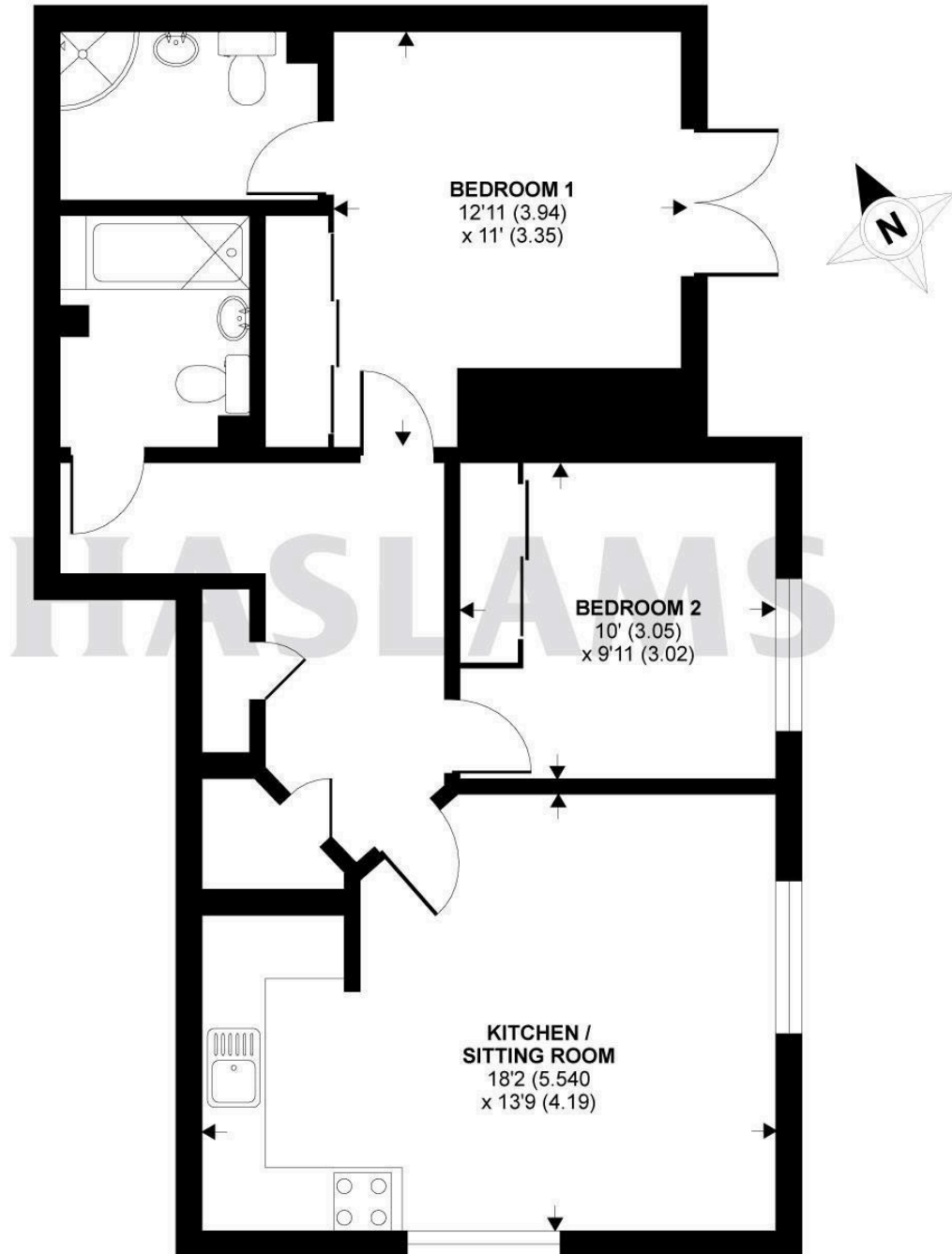
Broadband/Mobile Info: Connections available. For an indication of specific speeds and supply of Broadband and Mobile, we advise applicants go to the Ofcom website Broadband and Mobile Coverage Checker.





Eldon Lodge, Kings Road, Reading, RG1

APPROX. GROSS INTERNAL FLOOR AREA 726 SQ FT 67.4 SQ METRES



Whilst every attempt has been made to ensure the accuracy of the floor plan contained here, measurements of doors, windows and rooms are approximate and no responsibility is taken for any error, omission or misstatement. These plans are for representation purposes only as defined by RICS Code of Measuring Practice and should be used as such by any prospective purchaser. Specifically no guarantee is given on the total square footage of the property if quoted on this plan. Any figure given is for initial guidance only and should not be relied on as a basis of valuation.

Copyright nichecom.co.uk 2018 Produced for Haslam's REF : 394665