

Property ref: 177585

London Street, Reading, RG1 4SQ

£1,350 PCM

HASLAM'S
Lettings



A very well presented two bedroom apartment in a Grade II listed building, located just a stones' throw away from the popular Oracle Shopping Centre and just a few minutes walk away from Reading mainline train station.
Reading Borough Council tax band C.
Water supply: Mains
Drainage info: Mains
Electricity supply: Mains
Broadband/Mobile Info: Connections available. For an indication of specific speeds and supply of Broadband and Mobile, we advise applicants go to the Ofcom website Broadband and Mobile Coverage Checker.

- Two bedrooms; Master with en-suite
- Second floor apartment (no lift)
- Spacious living area; No parking
- Fully fitted kitchen with appliances
- Electric heating; EPC rating D
- Unfurnished; Managed by LANDLORD

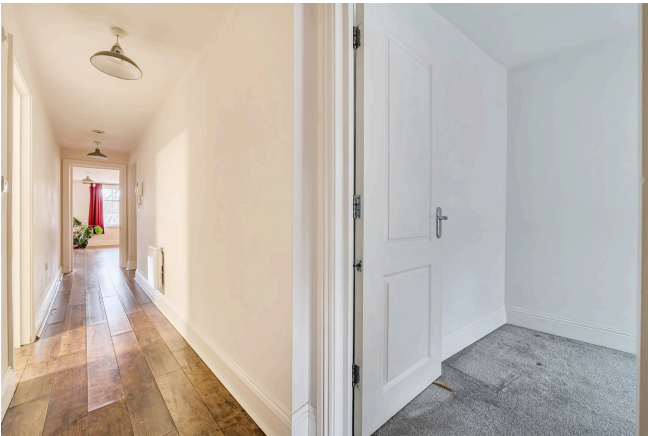
Available 06/01/2026

*Fees For Assured Shorthold Tenancies: when you rent a property from us you will be required to pay a sum equivalent to one weeks' rent for a holding deposit. Upon successful application, this amount will be off set against your first months' rent. You will also be required to pay a security deposit equivalent to 5 weeks' rent which will be held and protected in line with Deposit legislation. For more information about our fees please visit: www.haslams.net
Fees for all other tenancies (Non Housing Act Tenancies / Company Lets): when you rent a property from us we will charge you a one-off fee per property. This charge is the equivalent of 15 days of the monthly rental charge (+VAT) with a minimum fee of £450 (inc.VAT) up to a maximum of £650 (inc.VAT). Other fees may apply depending on your circumstances.

0118 960 1055

lettings@haslams.net www.haslams.net

Haslams Estate Agents Ltd, 159 Friar Street, Reading, Berkshire, RG1 1HE

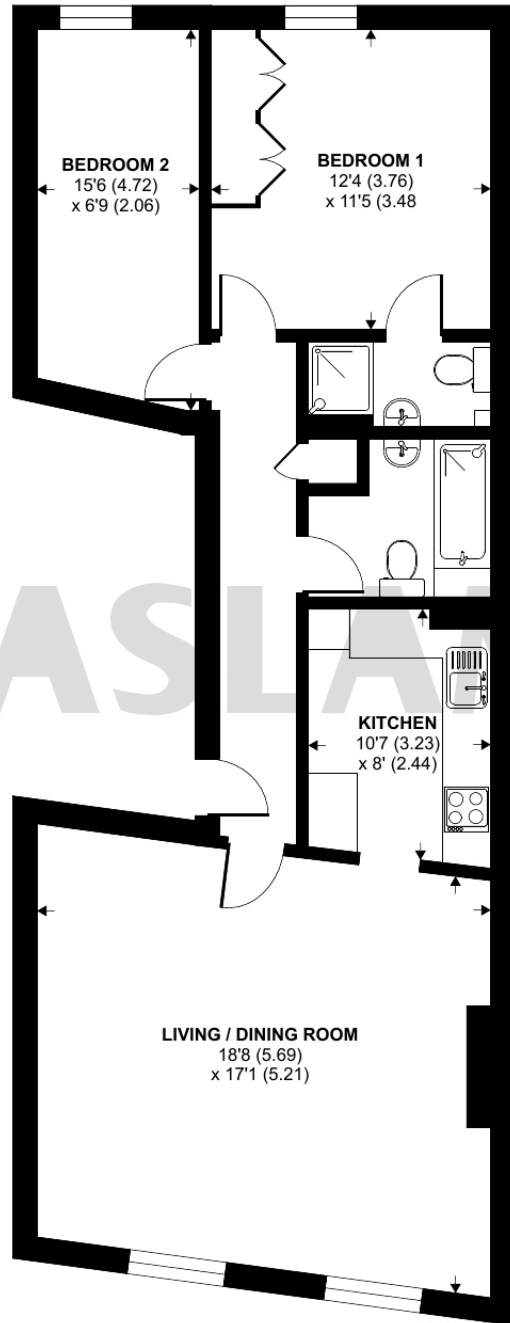


There are some external works to the building ongoing which involve scaffolding to the building frontage whilst works are carried out to the external walls and roof. Further details are available on request.

London Street, Reading, RG1

Approximate Area = 814 sq ft / 75.6 sq m

For identification only - Not to scale



SECOND FLOOR



Floor plan produced in accordance with RICS Property Measurement 2nd Edition, Incorporating International Property Measurement Standards (IPMS2 Residential). © nichecom 2025. Produced for Haslamss. REF: 1388846